

VOR/DME RWY 21

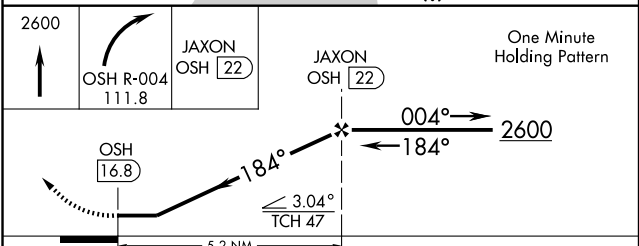
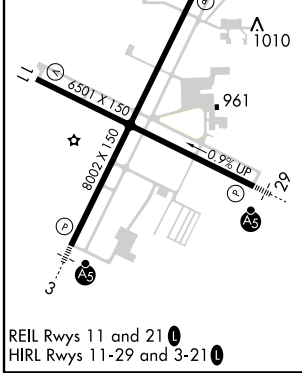
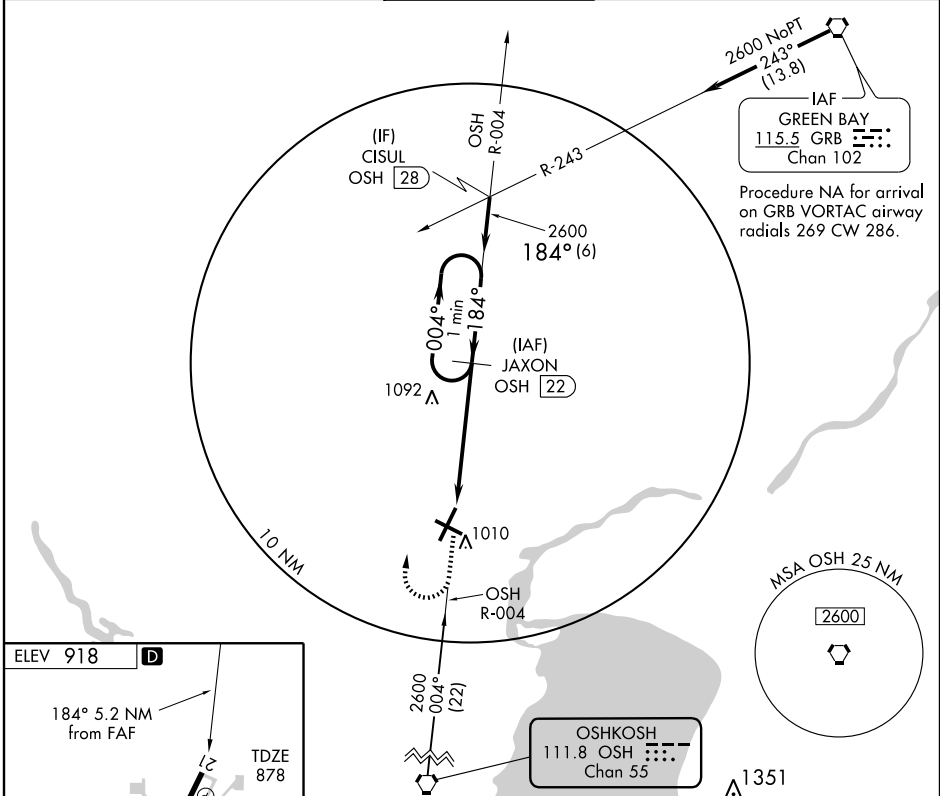
APPLETON/OUTAGAMIE COUNTY RGNL (ATW)

VORTAC OSH 111.8 Chan 55	APP CRS 184°	Rwy Idg 8002 TDZE 878 Apt Elev 918
--	------------------------	---

▲ If local altimeter setting not received, use Austin Straubel Intl altimeter setting and increase all MDAs 100 feet.

MISSED APPROACH: Climb to 2600 then right turn via OSH R-004 to JAXON and hold.

ATIS 127.15	GREEN BAY APP CON* 126.3 338.2	APPLETON TOWER* 119.6 (CTAF) 0	GND CON 121.7	UNICOM 122.95
-----------------------	--	---	-------------------------	-------------------------



CATEGORY	A	B	C	D
S-21	1400-1 522 (500-1)		1400-1½ 522 (500-1½)	1400-1¾ 522 (500-1¾)
CIRCLING	1400-1 482 (500-1)		1400-1½ 482 (500-1½)	1480-2 562 (600-2)

EC-3, 22 OCT 2009 to 19 NOV 2009

EC-3, 22 OCT 2009 to 19 NOV 2009