

RNAV (GPS) RWY 3

APPLETON/OUTAGAMIE COUNTY RGNL (ATW)

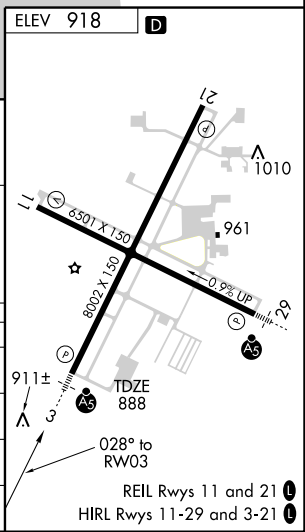
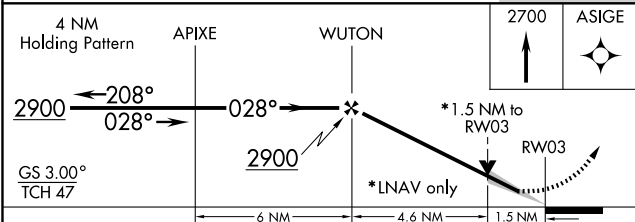
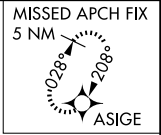
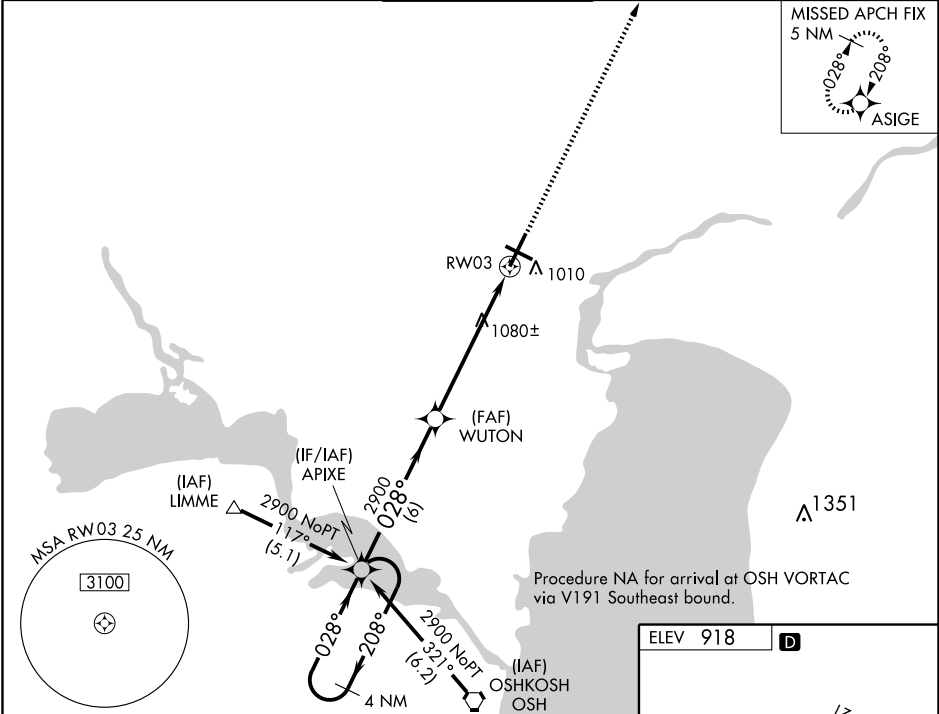
WAAS CH 56223 W03A	APP CRS 028°	Rwy Ldg 8002 TDZE 888 Apt Elev 918
--	------------------------	---

⚠ Baro-VNAV NA below -16°C (4°F). DME/DME RNP-0.3 NA. When local altimeter setting not received use Austin Straubel Intl altimeter setting and increase all DAs/MDAs 100 feet. Baro/VNAV and VDP NA when using Austin Straubel Intl altimeter setting. For inoperative MALSRS increase LPV visibility to RVR 4000 all Cats.

MALSRS
AS

MISSED APPROACH: Climb to 2700 direct ASIGE and hold.

ATIS 127.15	GREEN BAY APP CON* 126.3 338.2	APPLETON TOWER* 119.6 (CTAF) 0	GND CON 121.7	UNICOM 122.95
-----------------------	--	--	-------------------------	-------------------------



CATEGORY	A	B	C	D
LPV DA		1138/24	250 (300-½)	
LNAV/VNAV DA		1232/40	344 (400-¾)	
LNAV MDA	1400/24	512 (500-½)	1400/50 512 (500-1)	1400/60 512 (500-1¼)
CIRCLING	1400-1¼	482 (500-1¼)	1400-1½ 482 (500-1½)	1480-2 562 (600-2)

RNAV (GPS) RWY 3

EC-3, 22 OCT 2009 to 19 NOV 2009

EC-3, 22 OCT 2009 to 19 NOV 2009