

# RNAV (GPS) RWY 21

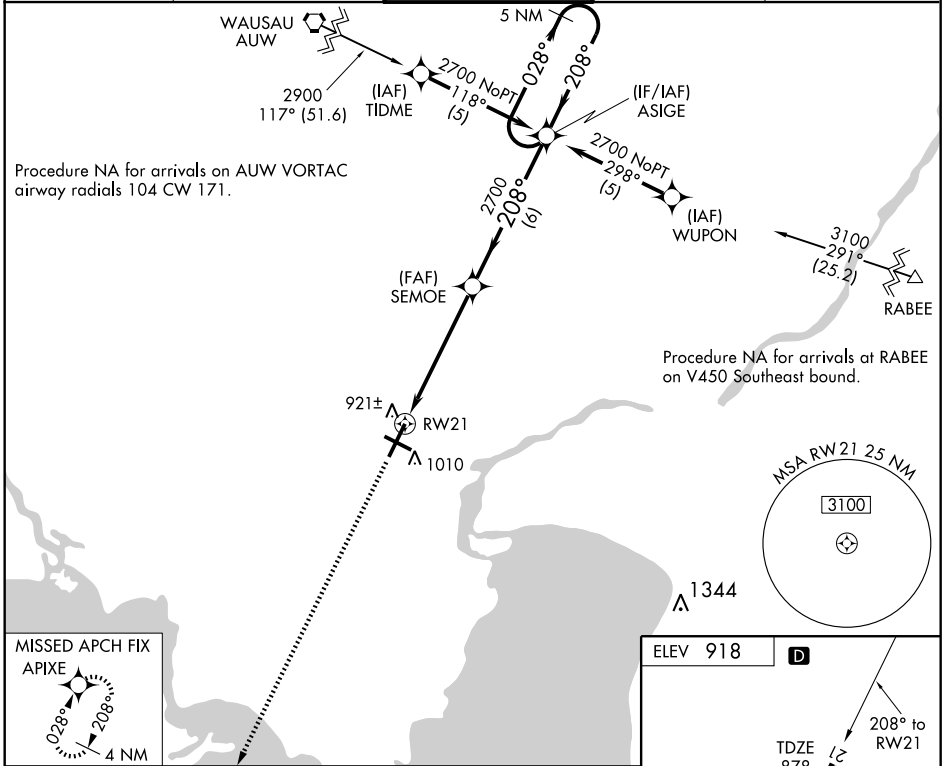
APPLETON/OUTAGAMIE COUNTY RGNL (ATW)

APP CRS <b>208°</b>	Rwy Idg <b>8002</b>
	TDZE <b>878</b>
	Apt Elev <b>918</b>

**⚠** Baro-VNAV NA below -16°C (4°F). DME/DME RNP-0.3 NA. When local altimeter setting not received use Austin Straubel Intl altimeter setting and increase all DAs/MDAs 100 feet. Baro/VNAV and VDP NA when using Austin Straubel Intl altimeter setting.

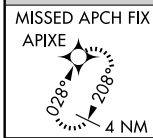
**MISSED APPROACH:** Climb to 2900 direct APIXE and hold.

ATIS <b>127.15</b>	GREEN BAY APP CON* <b>126.3 338.2</b>	APPLETON TOWER* <b>119.6 (CTAF) 0</b>	GND CON <b>121.7</b>	UNICOM <b>122.95</b>
-----------------------	--	--	-------------------------	-------------------------

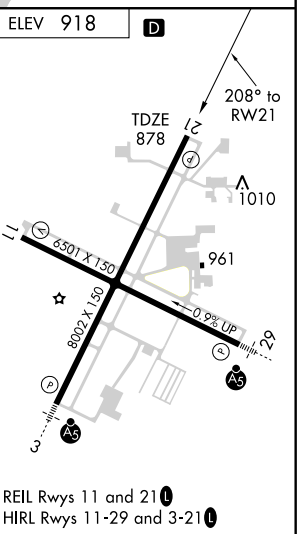


EC-3, 22 OCT 2009 to 19 NOV 2009

EC-3, 22 OCT 2009 to 19 NOV 2009



2900	APIXE	SEMOIE	ASIGE	5 NM Holding Pattern
↑	✧			
	*1.1 NM to RW21	*LNAV only	208°	028° → 2700
			← 208°	← 208°
	1.1	4.4 NM	6 NM	
CATEGORY	A	B	C	D
LPV DA	NA			
LNAV/VNAV DA	1204-1		326 (300-1)	
LNAV MDA	1260-1 382 (400-1)		1260-1¼ 382 (400-1¼)	
CIRCLING	1320-1 402 (500-1)	1380-1 462 (500-1)	1380-1½ 462 (500-1½)	1480-2 562 (600-2)



REIL Rwy 11 and 21  
HIRL Rwy 11-29 and 3-21