

APPLETON, WISCONSIN

AL-5216 (FAA)

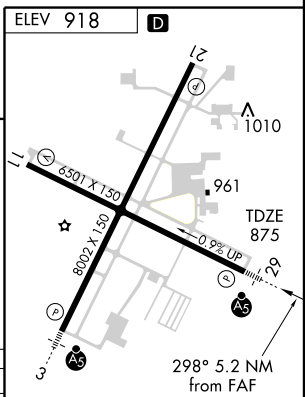
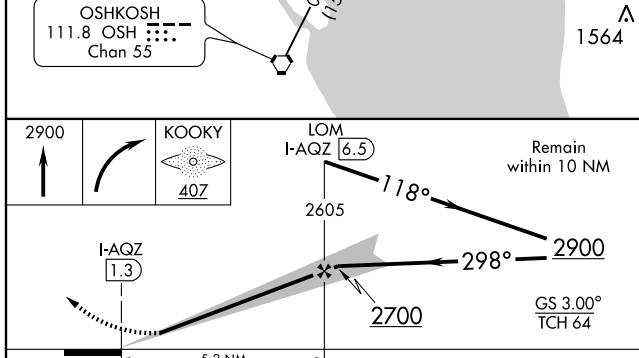
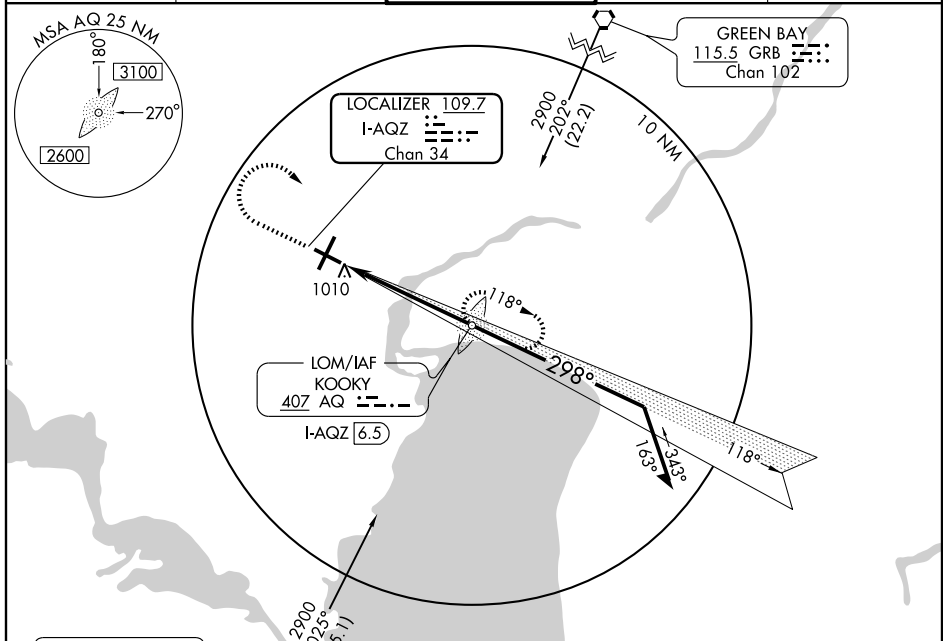
ILS RWY 29

APPLETON/OUTAGAMIE COUNTY RGNL (ATW)

LOC/DME I-AQZ 109.7 Chan 34	APP CRS 298°	Rwy Idg 6501 TDZE 875 Apt Elev 918
---	------------------------	---

<p>A For inoperative MALSR increase S-LOC 29 Cat. D visibility ¼ mile. ADF REQUIRED.</p>	<p>MALSR</p>	<p>MISSED APPROACH: Climb to 2900, then right turn direct KOOKY LOM and hold.</p>

ATIS 127.15	GREEN BAY APP CON* 126.3 338.2	APPLETON TOWER* 119.6 (CTAF) 0	GND CON 121.7	UNICOM 122.95
-----------------------	--	--	-------------------------	-------------------------



CATEGORY	A	B	C	D
S-ILS 29	1075-½		200 (200-½)	
S-LOC 29	1220-½ 345 (400-½)		1220-¾ 345 (400-¾)	
CIRCLING	1320-1 402 (500-1)	1380-1 462 (500-1)	1380-1½ 462 (500-1½)	1480-2 562 (600-2)

REIL Rwy 11 and 21	0
HIRL Rwy 11-29 and 3-21	0
FAF to MAP 5.2 NM	
Knots	60 90 120 150 180
Min:Sec	5:12 3:28 2:36 2:05 1:44

APPLETON, WISCONSIN
Amdt 2B 09295

APPLETON/OUTAGAMIE COUNTY RGNL (ATW)
44°15'N - 88°31'W
ILS RWY 29

EC-3, 22 OCT 2009 to 19 NOV 2009

EC-3, 22 OCT 2009 to 19 NOV 2009