

WAAS CH 57904 W20A	APP CRS 202°	Rwy Idg TDZE 468 Apt Elev 472	8002
--	------------------------	---	-------------

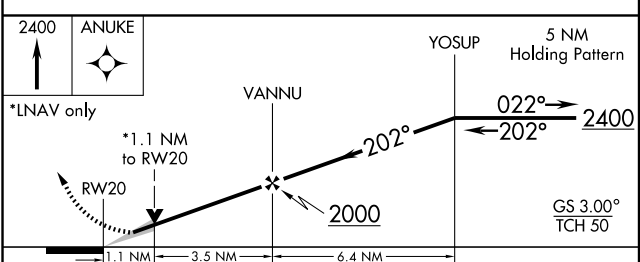
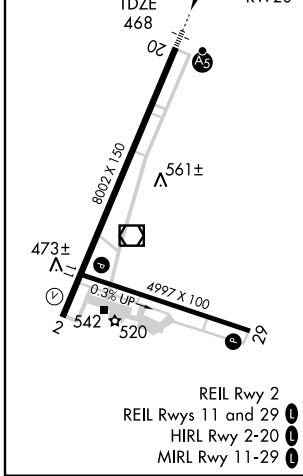
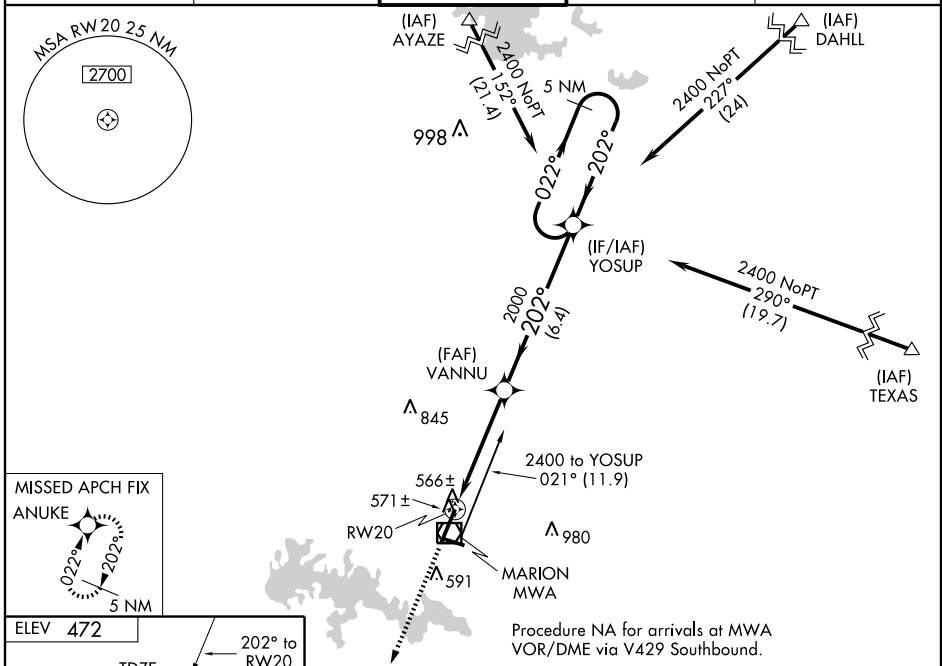
RNAV (GPS) RWY 20

MARION/WILLIAMSON COUNTY RGNL (MWA)

Baro-VNAV NA when using Carbondale-Murphysboro altimeter setting. If local altimeter setting not received, use Carbondale-Murphysboro altimeter setting and increase all DAs 36 feet and all MDAs 40 feet. For inoperative MALSR increase LNAV Cat D visibility to 1½. VDP NA when using Carbondale-Murphysboro altimeter setting. DME/DME RNP-0.3 NA.

MALSR **MISSED APPROACH:** Climb to 2400 direct ANUKE and hold.

AWOS-3 119.675	KANSAS CITY CENTER 125.3 269.5	MARION TOWER ★ 126.9 (CTAF) 0	GND CON 121.7	UNICOM 122.95
--------------------------	--	--	-------------------------	-------------------------



CATEGORY	A	B	C	D
LPV DA		718-½	250 (300-½)	
LNAV/VNAV DA		851-¾	383 (400-¾)	
LNAV MDA		860-½	392 (400-½)	860-1 392 (400-1)
CIRCLING	920-1 448 (500-1)	940-1 468 (500-1)	940-½ 468 (500-½)	1040-2 568 (600-2)