

MARION, ILLINOIS

AL-5215 (FAA)

RNAV (GPS) RWY 2

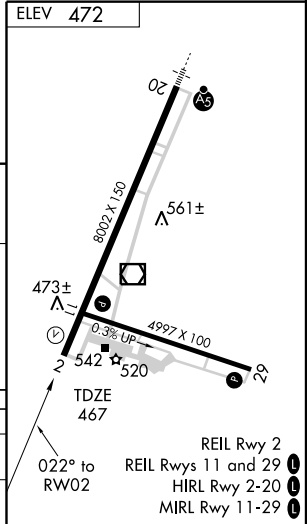
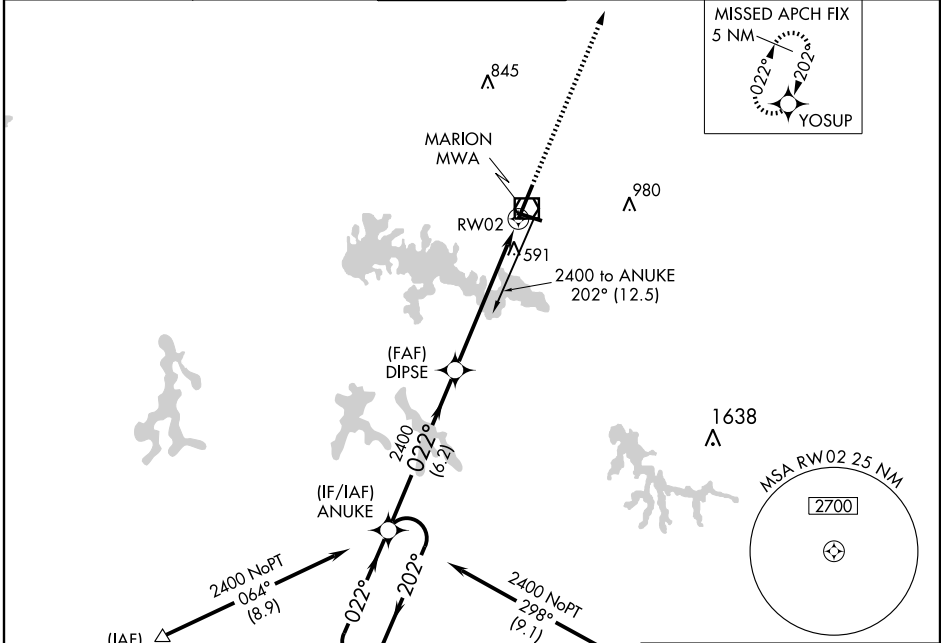
MARION/WILLIAMSON COUNTY RGNL (MWA)

APP CRS	Rwy Idg	8002
022°	TDZE	467
	Apt Elev	472

⚠ If local altimeter setting not received, use Carbondale-Murphysboro altimeter setting and increase all MDAs 40 feet.
⚠ Visibility reduction by helicopters NA. DME/DME RNP-0,3 NA.

MISSED APPROACH: Climb to 2400 direct YOSUP and hold.

AWOS-3 119.675	KANSAS CITY CENTER 125.3 269.5	MARION TOWER ★ 126.9 (CTAF) 0	GND CON 121.7	UNICOM 122.95
--------------------------	--	---	-------------------------	-------------------------



5 NM Holding Pattern	ANUKE	DIPSE	RW02
2400 ← 202°	022° →	2400	3.05° TCH 45
VGSI and descent angles not coincident.			
	6.2 NM	5.9 NM	

CATEGORY	A	B	C	D
RNAV MDA	860-1 393 (400-1)		860-1¼ 393 (400-1¼)	
CIRCLING	920-1 448 (500-1)	940-1 468 (500-1)	940-1½ 468 (500-1½)	1040-2 568 (600-2)

MARION, ILLINOIS
Orig 09239

MARION/WILLIAMSON COUNTY RGNL (MWA)
37°45'N - 89°01'W

RNAV (GPS) RWY 2

EC-3, 22 OCT 2009 to 19 NOV 2009

EC-3, 22 OCT 2009 to 19 NOV 2009