


ILS or LOC RWY 20

MARION/ WILLIAMSON COUNTY RGNL (MWA)

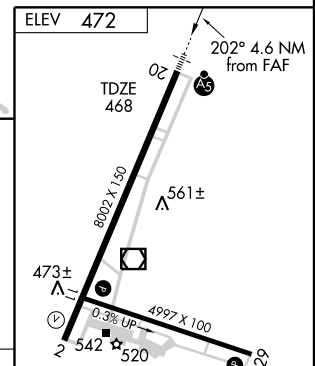
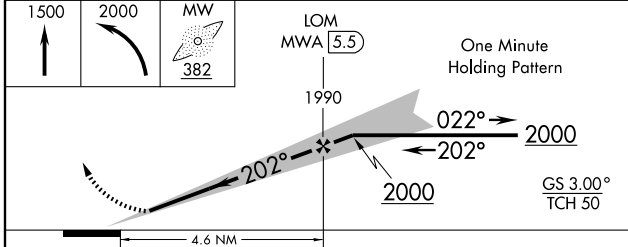
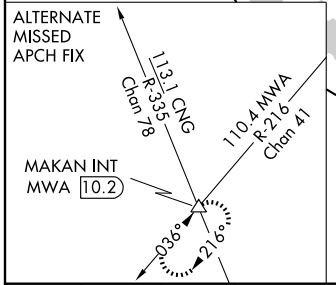
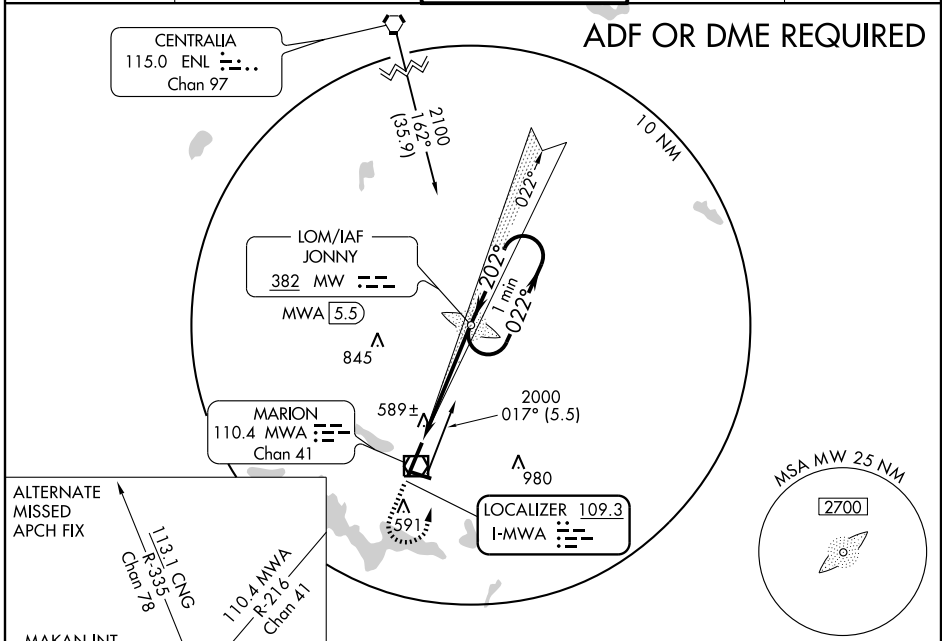
LOC I-MWA 109.3	APP CRS 202°	Rwy Idg 8002 TDZE 468 Apt Elev 472
---------------------------	------------------------	---

⚠ If local altimeter setting not received, use Carbondale-Murphysboro altimeter setting and increase all DA/MDAs 40 feet.
⚠ ADF REQUIRED.



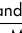
MALSRL 

MISSED APPROACH: Climb to 1500 then climbing left turn to 2000 direct JONNY LOM and hold.

AWOS-3 119.675	KANSAS CITY CENTER 125.3 269.5	MARION TOWER ★ 126.9 (CTAF) 0	GND CON 121.7	UNICOM 122.95
--------------------------	--	---	-------------------------	-------------------------



CATEGORY	A	B	C	D
S-ILS 20		668-½	200 (200-½)	
S-LOC 20		840-½	372 (400-½)	840-¾ 372 (400-¾)
CIRCLING	920-1 448 (500-1)	940-1 468 (500-1)	940-1½ 468 (500-1½)	1040-2 568 (600-2)

HIRL Rwy 2-20 
 MIRL Rwy 11-29 
 REIL Rwy 2
 REIL Rws 11 and 29 

FAF to MAP 4.6 NM

Knots	60	90	120	150	180
Min:Seq	4:36	3:04	2:18	1:50	1:32

ILS or LOC RWY 20

EC-3, 22 OCT 2009 to 19 NOV 2009

EC-3, 22 OCT 2009 to 19 NOV 2009