

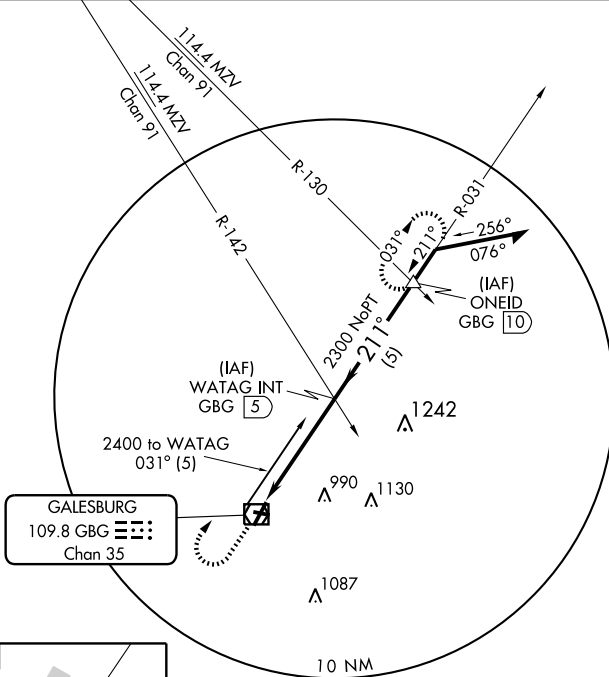
VOR or GPS RWY 21

GALESBURG MUNI (GBG)

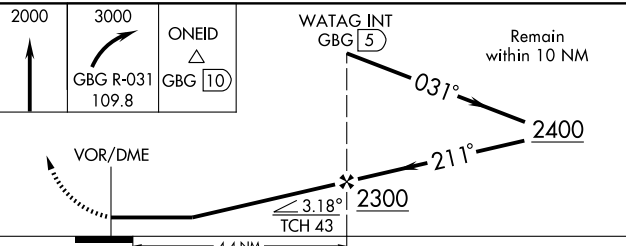
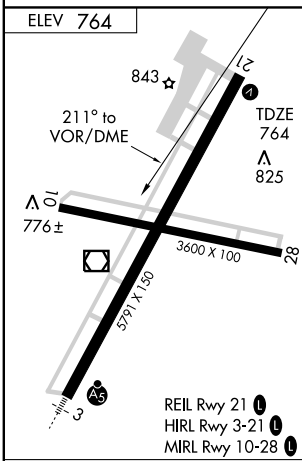
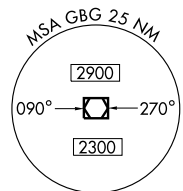
VOR/DME GBG 109.8 Chan 35	APP CRS 211°	Rwy Idg TDZE Apt Elev	5791 764 764
---	------------------------	-----------------------------	---

MISSED APPROACH: Climb to 2000 then climbing right turn to 3000 via GBG R-031 to ONEID Int/GBG 10 DME and hold.

AWOS-3 109.8	QUAD CITY APP CON ★ 118.2 257.8	CLNC DEL 120.7	UNICOM 123.0 (CTAF)
------------------------	---	--------------------------	-------------------------------



GALESBURG
109.8 GBG
Chan 35



CATEGORY	A	B	C	D
S-21	1220-1 456 (500-1)		1220-1¼ 456 (500-1½)	1220-1½ 456 (500-1½)
CIRCLING	1220-1 456 (500-1)		1220-1½ 456 (500-1½)	1340-2 576 (600-2)

Knots	60	90	120	150	180
Min:Sec					

EC-3, 22 OCT 2009 to 19 NOV 2009

EC-3, 22 OCT 2009 to 19 NOV 2009