

IRONWOOD, MICHIGAN


AL-5213 (FAA)

VORTAC IWD 108.8 Chan 25	APP CRS 283°	Rwy Idg TDZE Apt Elev	6501 1230 1230
---------------------------------------	------------------------	-----------------------------	---

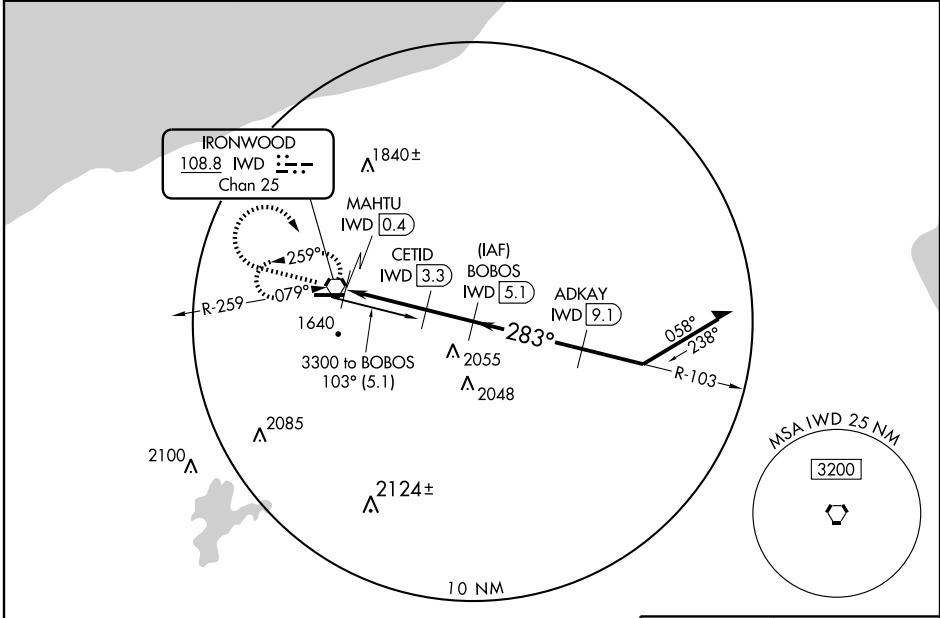
VOR/DME RWY 27

IRONWOOD/GOGEBIC-IRON COUNTY (IWD)

⚠ For inoperative MALS when using Ashland altimeter setting, increase S-27 Cat A visibility to 1 mile. When local altimeter setting not received, use Ashland altimeter setting and increase all MDA 140 feet, increase S-27 Cat A/B visibility ¼ mile, Cat C/D ½ mile, increase Circling Cat A/B visibility ¼ mile, Cat C ½ mile.

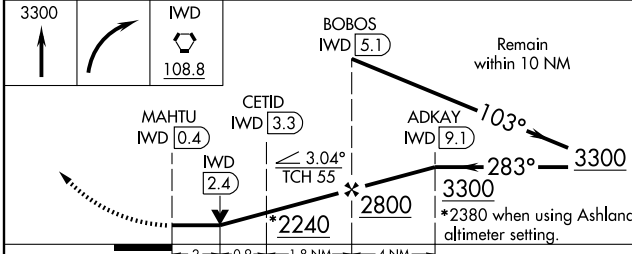
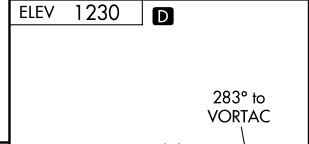
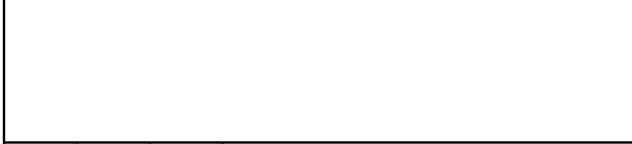
MALS

MISSED APPROACH: Climb to 3300 then right turn direct IWD VORTAC and hold.

AWOS-3 125.175	MINNEAPOLIS CENTER 133.55	GREEN BAY RADIO 122.3	UNICOM 122.8 (CTAF) 📻
--------------------------	-------------------------------------	---------------------------------	--

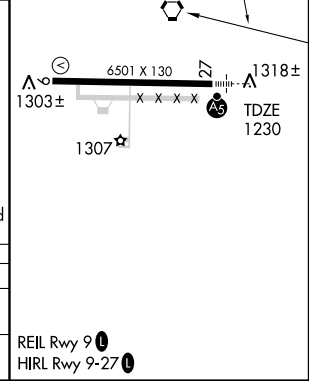


EC-1, 22 OCT 2009 to 19 NOV 2009

EC-1, 22 OCT 2009 to 19 NOV 2009



CATEGORY	A	B	C	D
S-27	1940-½ 710 (800-½)	1940-1½ 710 (800-1½)	1940-1¾ 710 (800-1¾)	1940-1¾ 710 (800-1¾)
CIRCLING	2100-1 870 (900-1)	2100-1¼ 870 (900-1¼)	2100-2½ 870 (900-2½)	2220-3 990 (1000-3)



IRONWOOD, MICHIGAN
Amdt 9 09295

46°32'N - 90°08'W

IRONWOOD/GOGEBIC-IRON COUNTY (IWD)

VOR/DME RWY 27

REIL Rwy 9 **📻**
HIRL Rwy 9-27 **📻**