

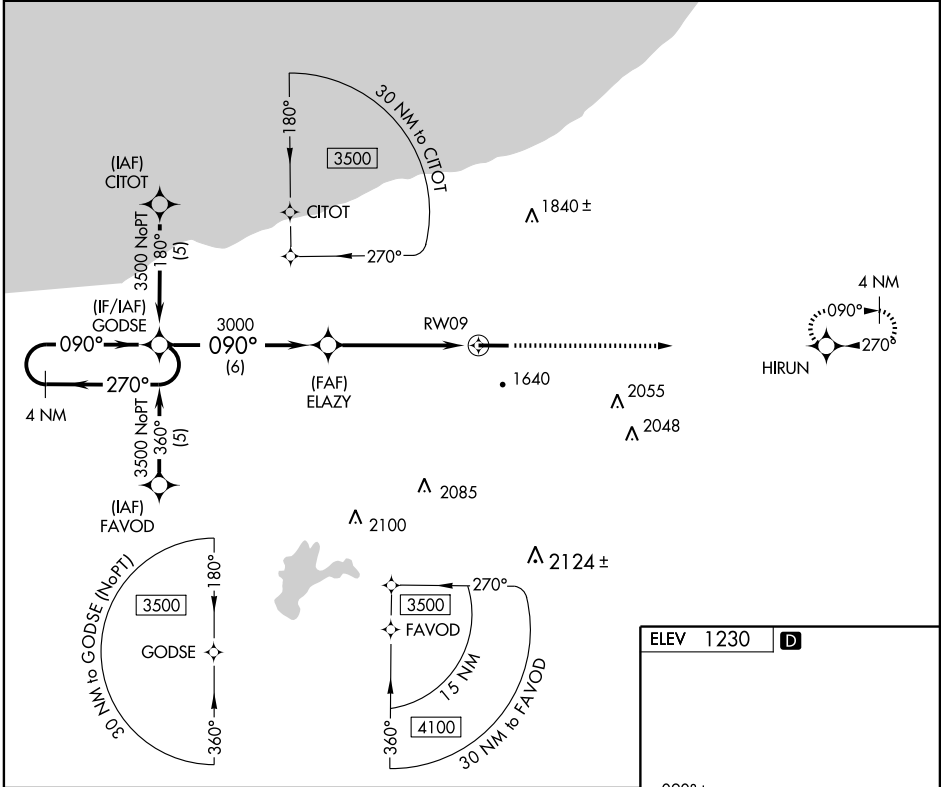
RNAV (GPS) RWY 9

IRONWOOD/GOGEBIC-IRON COUNTY (IWD)

APP CRS	Rwy Idg	6501
090°	TDZE	1230
	Apt Elev	1230

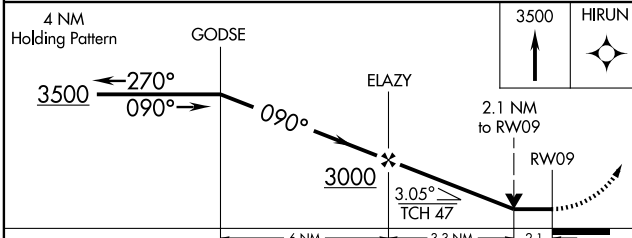
MISSED APPROACH: Climb to 3500 direct HIRUN and hold.

AWOS-3 125.175	MINNEAPOLIS CENTER 133.55	GREEN BAY RADIO 122.3	UNICOM 122.8 (CTAF) 0
--------------------------	-------------------------------------	---------------------------------	--



EC-1, 22 OCT 2009 to 19 NOV 2009

EC-1, 22 OCT 2009 to 19 NOV 2009



ELEV 1230	D
-----------	----------

Detailed diagram of the RWY 09 approach path. It shows the runway (6501 x 130) with a TDZE of 1230. The HIRUN holding point is at 1303±. The final approach path is shown with a 270° turn and a 1318± altitude. The diagram also shows the 4 NM holding pattern for GODSE and the 2.1 NM distance to RWY 09.

REIL Rwy 9 **0**
HIRL Rwy 9-27 **0**

CATEGORY	A	B	C	D
LNNAV MDA	1940-1 710 (800-1)		1940-2 710 (800-2)	1940-2 1/4 710 (800-2 1/4)
CIRCLING	2100-1 870 (900-1)	2100-1 1/4 870 (900-1 1/4)	2100-2 1/2 870 (900-2 1/2)	2220-3 990 (1000-3)