

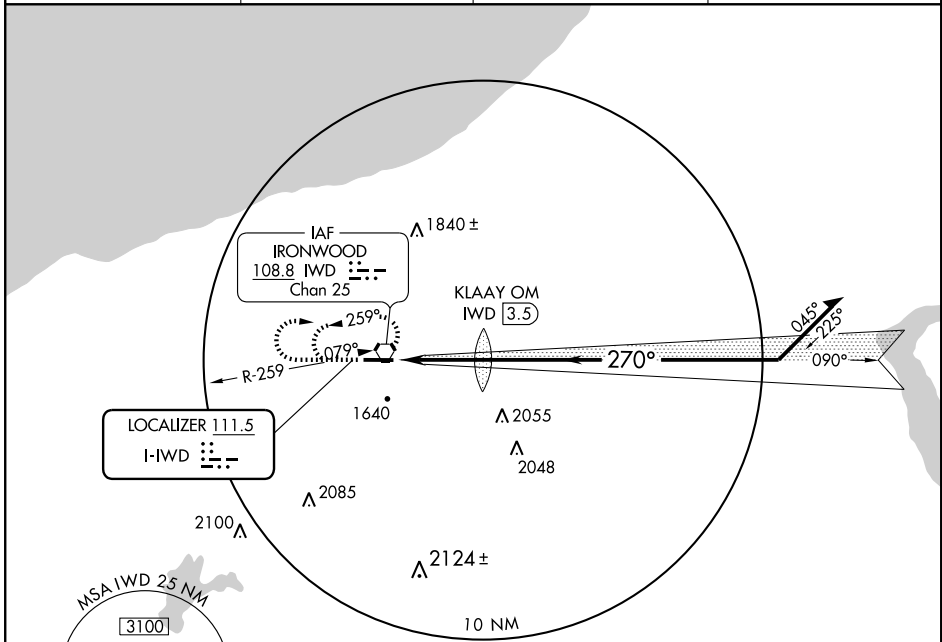
# ILS RWY 27

IRONWOOD/GOGEBIC-IRON COUNTY (IWD)

LOC I-HWD <b>111.5</b>	APP CRS <b>270°</b>	Rwy Idg <b>6501</b>
		TDZE <b>1230</b>
		Apt Elev <b>1230</b>

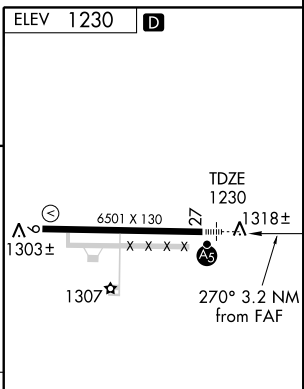
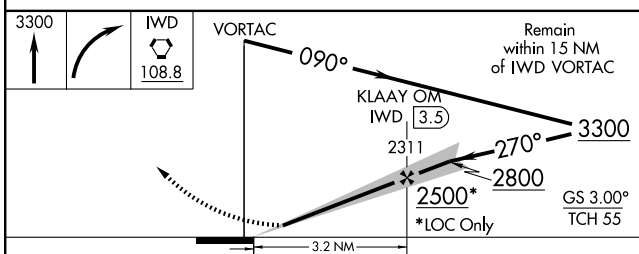
<p><b>▽</b> Use Ironwood altimeter setting; if not received, procedure not authorized.</p> <p><b>△ NA</b></p>	<p><b>MALSR</b></p>	<p><b>MISSED APPROACH:</b> Climb to 3300, then right turn direct IWD VORTAC and hold.</p>
---	---------------------	---

AWOS-3 <b>125.175</b>	MINNEAPOLIS CENTER <b>133.55</b>	GREEN BAY RADIO <b>122.3</b>	UNICOM <b>122.8 (CTAF) 0</b>
--------------------------	-------------------------------------	---------------------------------	---------------------------------



EC-1, 22 OCT 2009 to 19 NOV 2009

EC-1, 22 OCT 2009 to 19 NOV 2009



CATEGORY	A	B	C	D
S-ILS 27		1430-½	200 (200-½)	
S-LOC-27	1720-½	490 (500-½)	1720-¾ 490 (500-¾)	1720-1 490 (500-1)
CIRCLING	2100-1 870 (900-1)	2100-1¼ 870 (900-1¼)	2100-2½ 870 (900-2½)	2220-3 990 (1000-3)

REIL Rwy 9 <b>0</b>	
HIRL Rwy 9-27 <b>0</b>	
FAF to MAP 3.2 NM	
Knots	60 90 120 150 180
Min:Sec	3:12 2:08 1:36 1:17 1:04