

VOR RWY 14

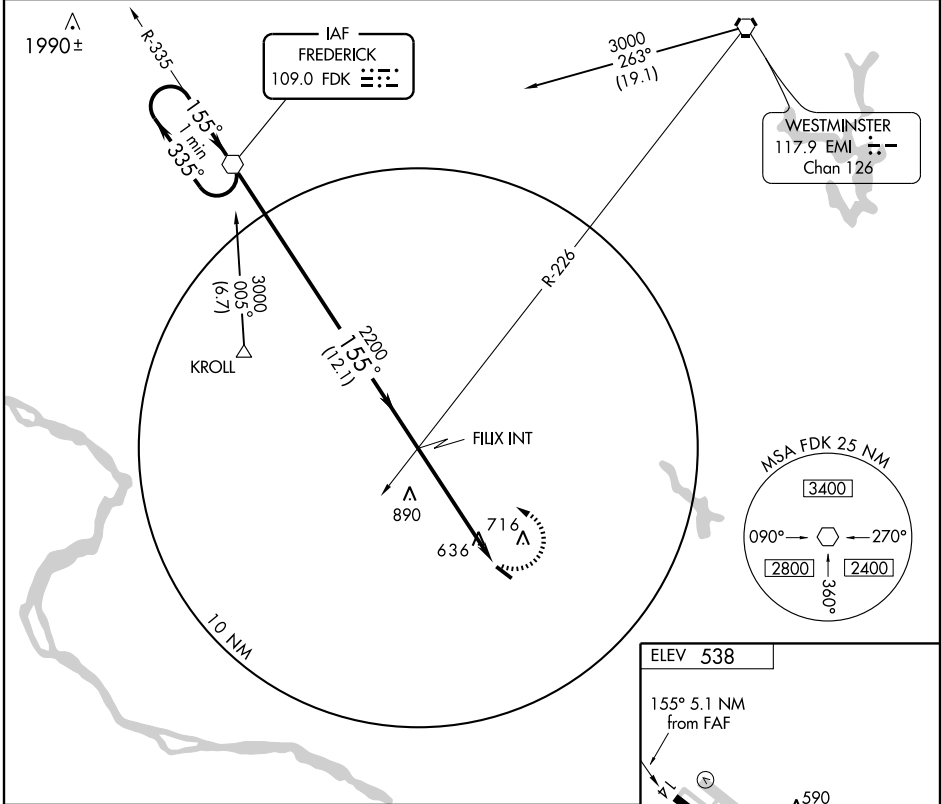
GAITHERSBURG/ MONTGOMERY COUNTY AIRPARK (GAI)

VOR FDK 109.0	APP CRS 155°	Rwy Idg 4202 TDZE 523 Apt Elev 538
-------------------------	------------------------	---

⚠ Circling to Rwy 32 NA at night.
If local altimeter not received, use Washington Dulles
⚠ NA Intl altimeter setting and increase all MDAs 80 feet.

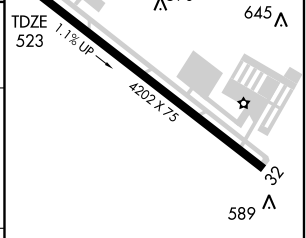
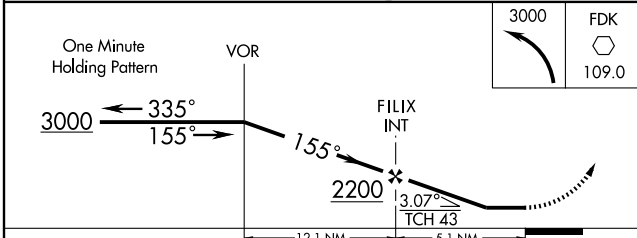
MISSED APPROACH: Climbing left turn to 3000
direct FDK VOR and hold.

AWOS-3 128.275	POTOMAC APP CON 128.7 291.625	CLNC DEL 121.6	UNICOM 123.075 (CTAF) 1
--------------------------	---	--------------------------	-----------------------------------



NE-3, 22 OCT 2009 to 19 NOV 2009

NE-3, 22 OCT 2009 to 19 NOV 2009



CATEGORY	A	B	C	D
S-14	1200-1 677 (700-1)		1200-2 677 (700-2)	1200-2 1/4 677 (700-2 1/4)
CIRCLING	1200-1 662 (700-1)		1200-2 662 (700-2)	1200-2 1/4 662 (700-2 1/4)

REIL Rwys 14 and 32 1
MIRL Rwy 14-32 1

FAF to MAP 5.1 NM

Knots	60	90	120	150	180
Min:Sec	5:06	3:24	2:33	2:02	1:42

VOR RWY 14