

NDB RWY 14

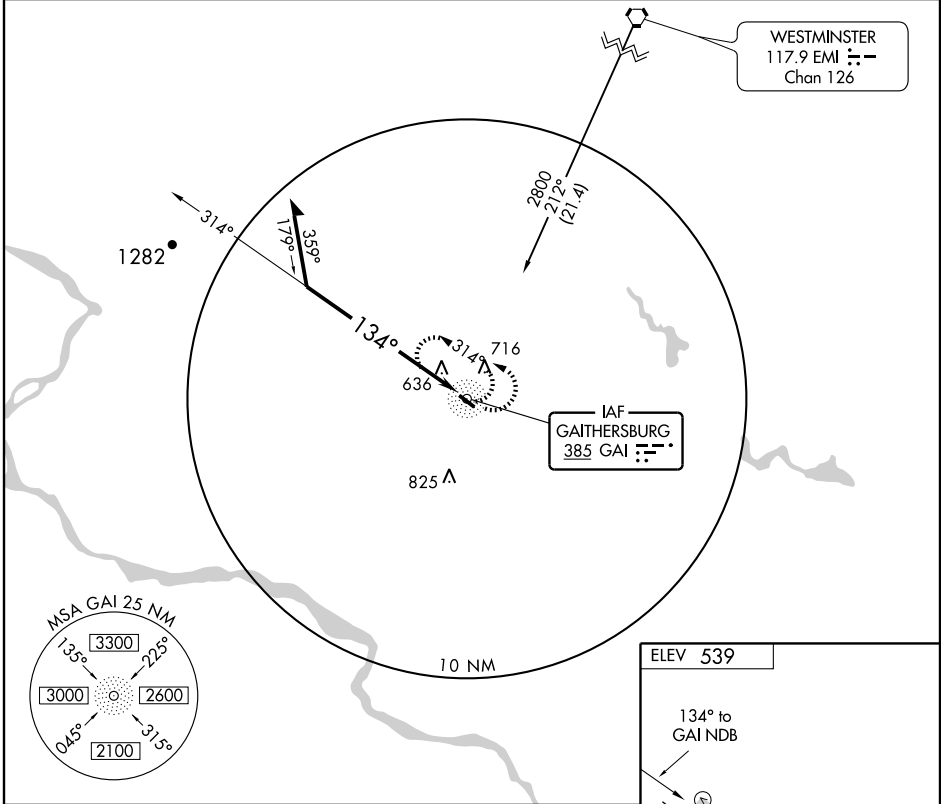
GAITHERSBURG/ MONTGOMERY COUNTY AIRPARK (GAI)

NDB GAI 385	APP CRS 134°	Rwy Idg 4202 TDZE 520 Apt Elev 539
-----------------------	------------------------	---

⚠ Circling to Rwy 32 NA at night.
⚠ If local altimeter not received, use Washington Dulles Intl altimeter setting and increase all MDAs 80 feet.

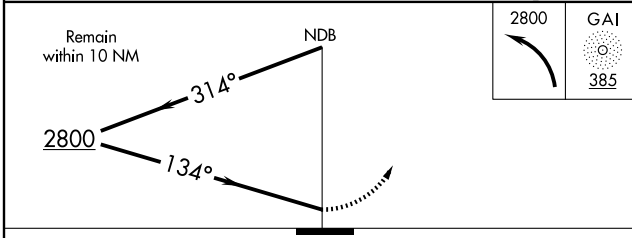
MISSED APPROACH: Climbing left turn to 2800 in GAI NDB holding pattern.

AWOS-3 128.275	POTOMAC APP CON 128.7 291.625	CLNC DEL 121.6	UNICOM 123.075 (CTAF) 0
--------------------------	---	--------------------------	--



NE-3, 22 OCT 2009 to 19 NOV 2009

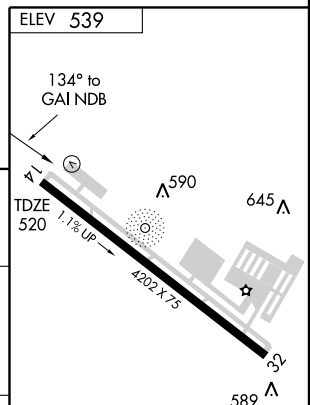
NE-3, 22 OCT 2009 to 19 NOV 2009



2800

GAI

385



CATEGORY	A	B	C	D
S-14	1380-1 860 (900-1)	1380-1¼ 860 (900-1¼)	1380-2½ 860 (900-2½)	1380-2¾ 860 (900-2¾)
CIRCLING	1380-1 841 (900-1)	1380-1¼ 841 (900-1¼)	1380-2½ 841 (900-2½)	1380-2¾ 841 (900-2¾)

REIL Rws 14 and 32 **0**

MIRL Rwy 14-32 **0**

Knots	60	90	120	150	180
Min:Sec					

NDB RWY 14