

FORT EUSTIS, VIRGINIA

COPTER RNAV (GPS) RWY 14

APCH CRS	Rwy Idg	3020
139°	TDZE	11
	Arpt Elev	11

AL-5211 [USA]

FELKER AAF (KFAF)

▲ When local altimeter setting not received, use Newport News/Williamsburg Intl altimeter setting and increase MDA 20 feet. VDP NA when using Newport News/Williamsburg Intl altimeter setting. DME/DME RNP-0.3 NA

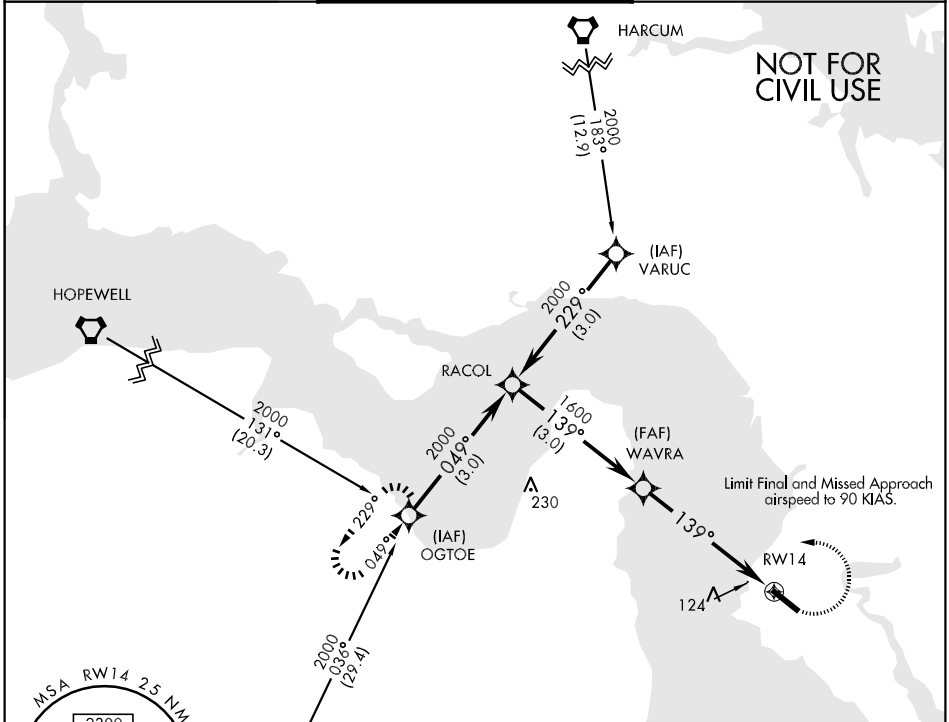


MISSED APPROACH: Climbing left turn to 2000 direct OGTOE and hold.

NORFOLK APP CON
125.7 335.625

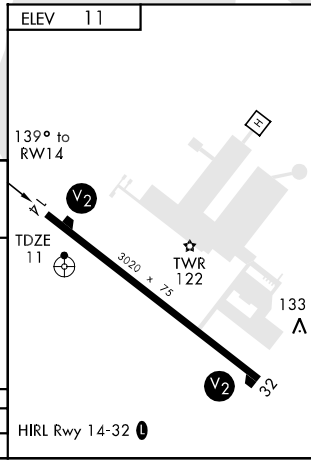
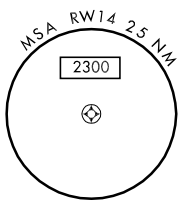
FELKER TOWER ★
126.3 (CTAF) 0 269.25

GND CON
121.35 229.4

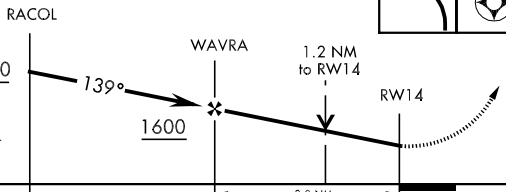
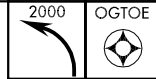


NE-3, 22 OCT 2009 to 19 NOV 2009

NE-3, 22 OCT 2009 to 19 NOV 2009



VGSI and descent angles not coincident.



CATEGORY	COPTER		
LNAV MDA	420-¾	409	(500-¾)

FORT EUSTIS, VIRGINIA
Orig 09239

37°08'N-76°37'W

FELKER AAF (KFAF)

COPTER RNAV (GPS) RWY 14