

CAMPBELLVILLE, KENTUCKY

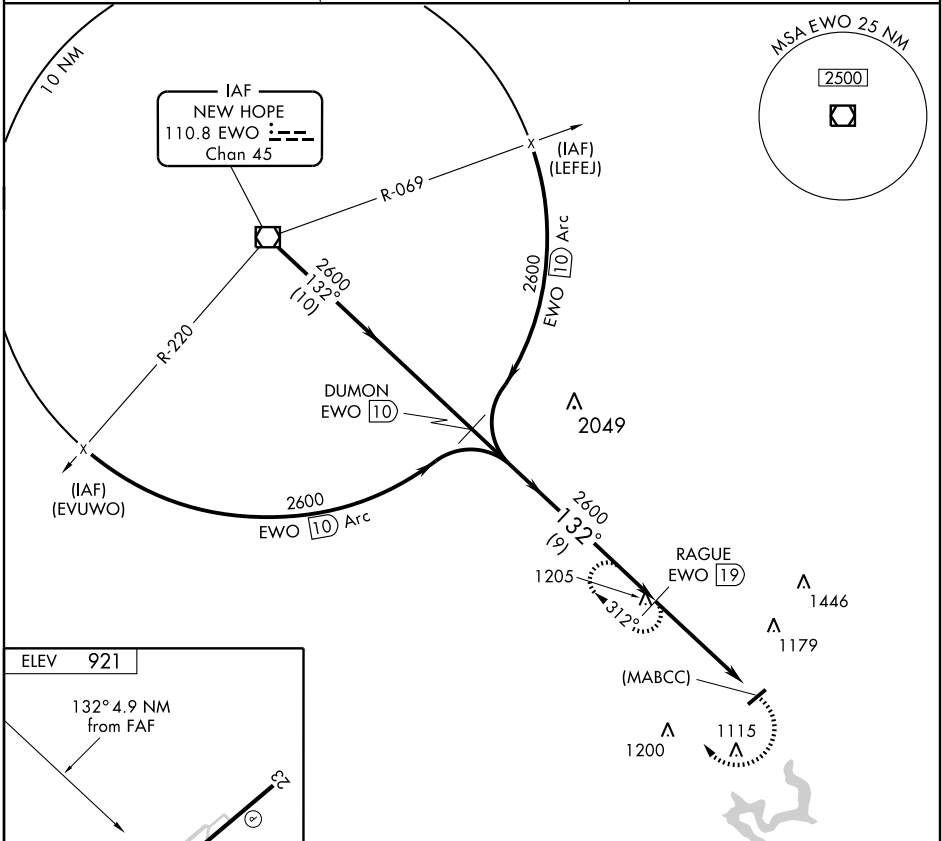
AL-5210 (FAA)

VOR/DME EWO 110.8 Chan 45	APP CRS 132°	Rwy Idg TDZE Apt Elev N/A N/A 921
---	------------------------	---

VOR/DME or GPS-A
CAMPBELLVILLE/ TAYLOR COUNTY (A.A.S)

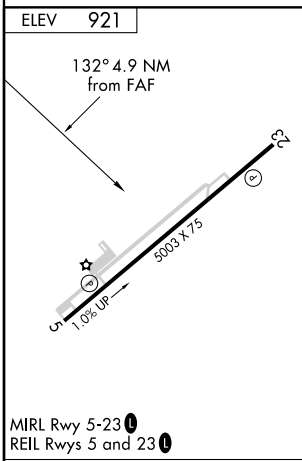
NA If local altimeter setting not received, use Somerset altimeter setting and increase all MDAs 100 feet. MISSED APPROACH: Climbing right turn to 2600 via EWO R-132 to RAGUE 19 DME and hold.

AWOS-3 121.125	INDIANAPOLIS CENTER 121.175 353.65	UNICOM 122.7 (CTAF) 0
--------------------------	--	---------------------------------

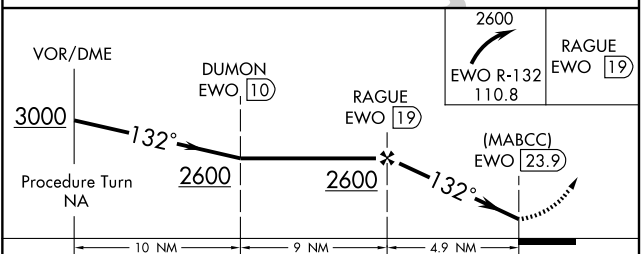


SE-1, 22 OCT 2009 to 19 NOV 2009

SE-1, 22 OCT 2009 to 19 NOV 2009



ELEV	921
MIRL Rwy	5-23
REIL Rws	5 and 23



CATEGORY	A	B	C	D
CIRCLING	1440-1 519 (600-1)	1440-1¼ 519 (600-1¼)	1440-1½ 519 (600-1½)	1480-2 559 (600-2)

CAMPBELLVILLE, KENTUCKY
Amdt 5A 03135

37°21'N-85°19'W

CAMPBELLVILLE/ TAYLOR COUNTY (A.A.S)
VOR/DME or GPS-A