

WORTHINGTON, MINNESOTA

AL-5209 (FAA)

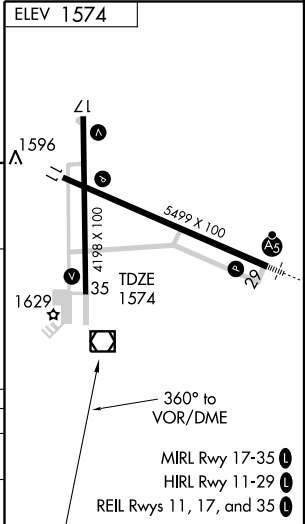
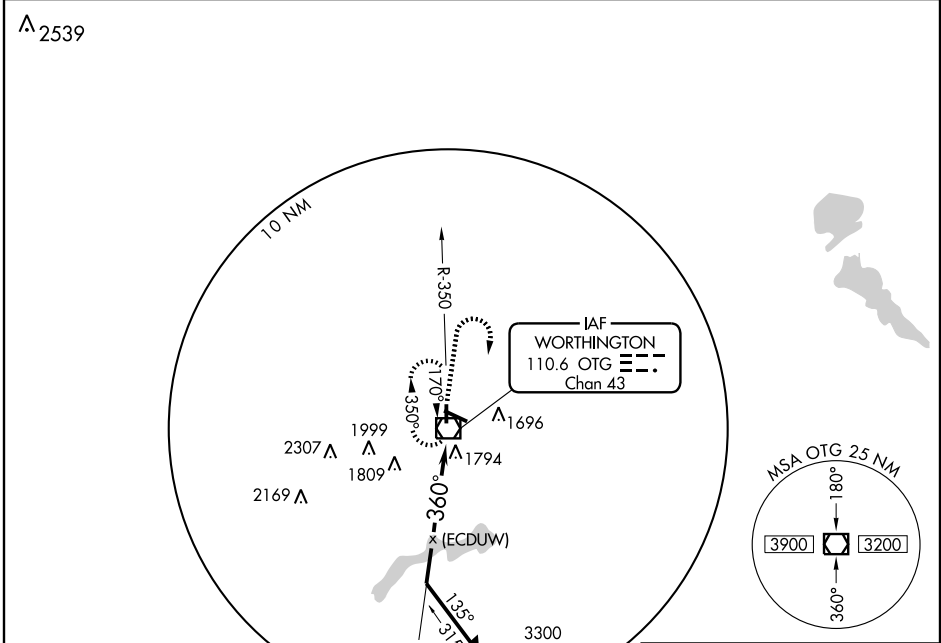
VOR or GPS RWY 35

WORTHINGTON MUNI (OTG)

VOR/DME OTG 110.6 Chan 43	APP CRS 360°	Rwy Idg TDZE Apt Elev	4198 1574 1574
---	------------------------	-----------------------------	---

▽ MISSED APPROACH: Climb to 2700 then climbing right turn to 3300 direct OTG VOR/DME and hold.

AWOS-3 110.6	MINNEAPOLIS CENTER 132.05 317.4	UNICOM 122.8 (CTAF) ①
------------------------	---	--



CATEGORY	A	B	C	D
S-35	2100-1	526 (600-1)	2100-1½ 526 (600-1½)	2100-1¾ 526 (600-1¾)
CIRCLING	2100-1	526 (600-1)	2100-1½ 526 (600-1½)	2140-2 566 (600-2)

WORTHINGTON, MINNESOTA	Amdt 5 09239
------------------------	--------------

43°39'N-95°35'W

WORTHINGTON MUNI (OTG)

VOR or GPS RWY 35

NC-1, 22 OCT 2009 to 19 NOV 2009

NC-1, 22 OCT 2009 to 19 NOV 2009