

WORTHINGTON, MINNESOTA

AL-5209 (FAA)

NDB or GPS RWY 29

WORTHINGTON MUNI (OTG)

LOM OT 277	APP CRS 288°	Rwy Idg TDZE Apt Elev	5499 1570 1574
----------------------	------------------------	-----------------------------	---

NA

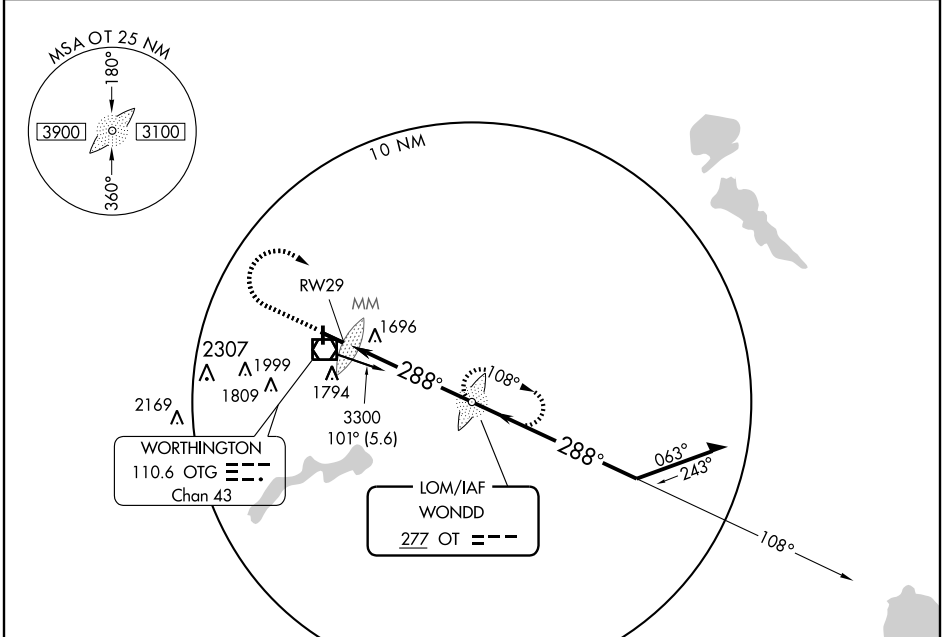
MALSR

MISSED APPROACH: Climb to 2500 then climbing right turn to 3300 direct OT LOM and hold.

AWOS-3
110.6

MINNEAPOLIS CENTER
132.05 317.4

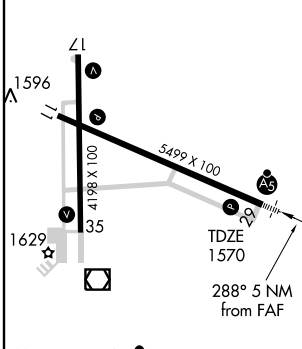
UNICOM
122.8 (CTAF) **Q**



NC-1, 22 OCT 2009 to 19 NOV 2009

NC-1, 22 OCT 2009 to 19 NOV 2009

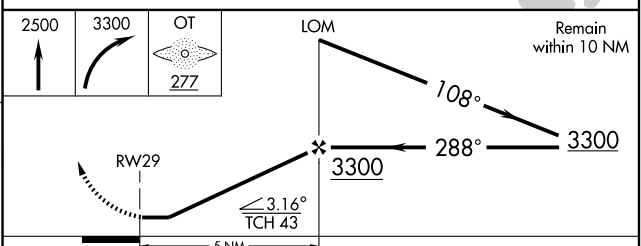
ELEV 1574



MIRL Rwy 17-35 **Q**
HIRL Rwy 11-29 **Q**
REIL Rwys 11, 17, and 35 **Q**

FAF to MAP 5 NM

Knots	60	90	120	150	180
Min:Sec	5:00	3:20	2:30	2:00	1:40



CATEGORY	A	B	C	D
S-29	2100-3/4 530 (600-3/4)	2100-1 530 (600-1)	2100-1 1/2 530 (600-1 1/2)	2100-1 1/2 530 (600-1 1/2)
CIRCLING	2100-1 526 (600-1)	2100-1 1/2 526 (600-1 1/2)	2140-2 566 (600-2)	2140-2 566 (600-2)

WORTHINGTON, MINNESOTA
Orig-B 09239

43°39'N-95°35'W

WORTHINGTON MUNI (OTG) NDB or GPS RWY 29