

OGDENSBURG, NEW YORK

AL-5207 (FAA)

LOC RWY 27
OGDENSBURG INTL (OGS)

LOC/DME I-OGS 110.7 Chan 44	APP CRS 269°	Rwy Idg 5200 TDZE 297 Apt Elev 297
---	------------------------	---

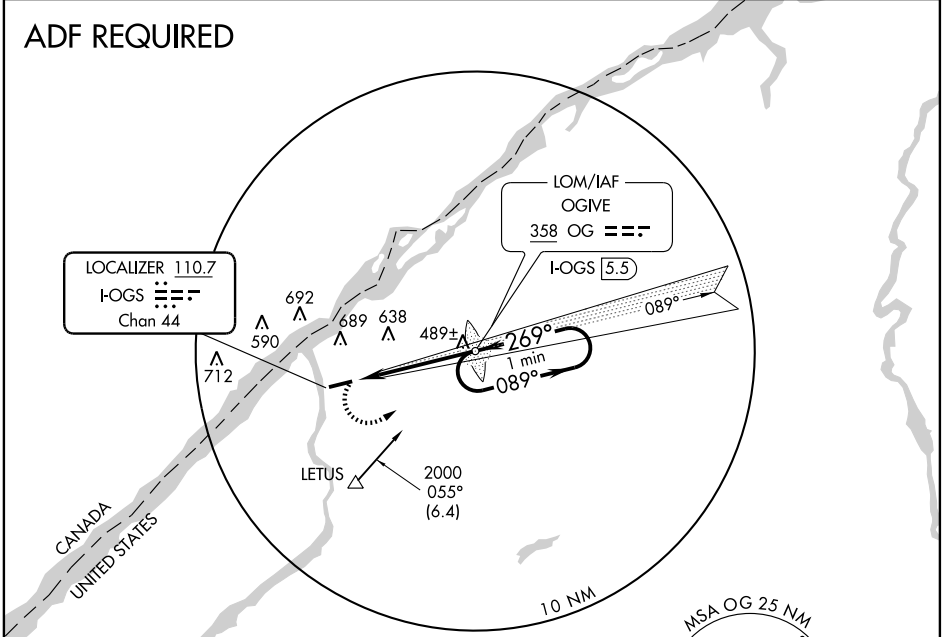
NA Circling to Rwy 9 NA at night. Inoperative table does not apply. Visibility reduction by helicopters NA. When local altimeter setting not received, use Massena altimeter setting and increase all MDA 100 feet, S-27 Cats C and D and Circling Cats B/C/D visibility ¼ mile.

MALS

MISSED APPROACH: Climbing left turn to 2000 direct OGIVE LOM and hold.

AWOS-3 118.525	BOSTON CENTER 135.25 377.1	UNICOM 122.8 (CTAF) 0
--------------------------	--------------------------------------	---------------------------------

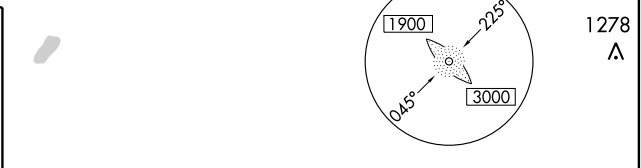
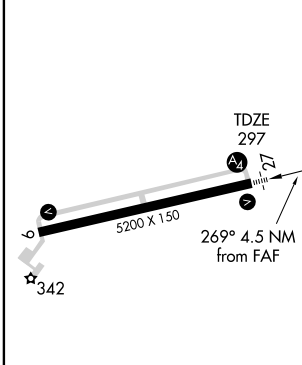
ADF REQUIRED



NE-2, 22 OCT 2009 to 19 NOV 2009

NE-2, 22 OCT 2009 to 19 NOV 2009

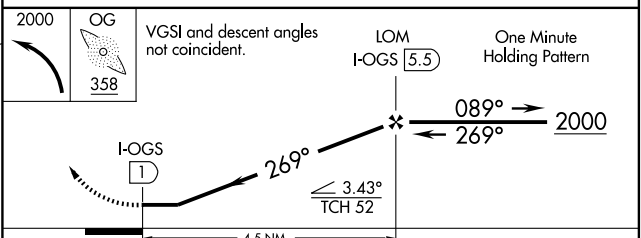
ELEV 297



HIRL Rwy 9-27 0

FAF to MAP 4.5 NM

Knots	60	90	120	150	180
Min:Sec	4:30	3:00	2:15	1:48	1:30



CATEGORY	A	B	C	D
S-27	740-1 443 (500-1)	443 (500-1)	740-1¼ 443 (500-1¼)	740-1½ 443 (500-1½)
CIRCLING	740-1 443 (500-1)	1000-1 703 (800-1)	1000-2 703 (800-2)	1000-2¼ 703 (800-2¼)

OGDENSBURG, NEW YORK
Amdt 3 09071

44°41'N - 75°28'W

OGDENSBURG INTL (OGS)
LOC RWY 27