

VORTAC EWC <b>115.8</b> Chan <b>105</b>	APP CRS <b>256°</b>	Rwy Idg TDZE Apt Elev	<b>4501</b> <b>1253</b> <b>1253</b>
---	------------------------	-----------------------------	---

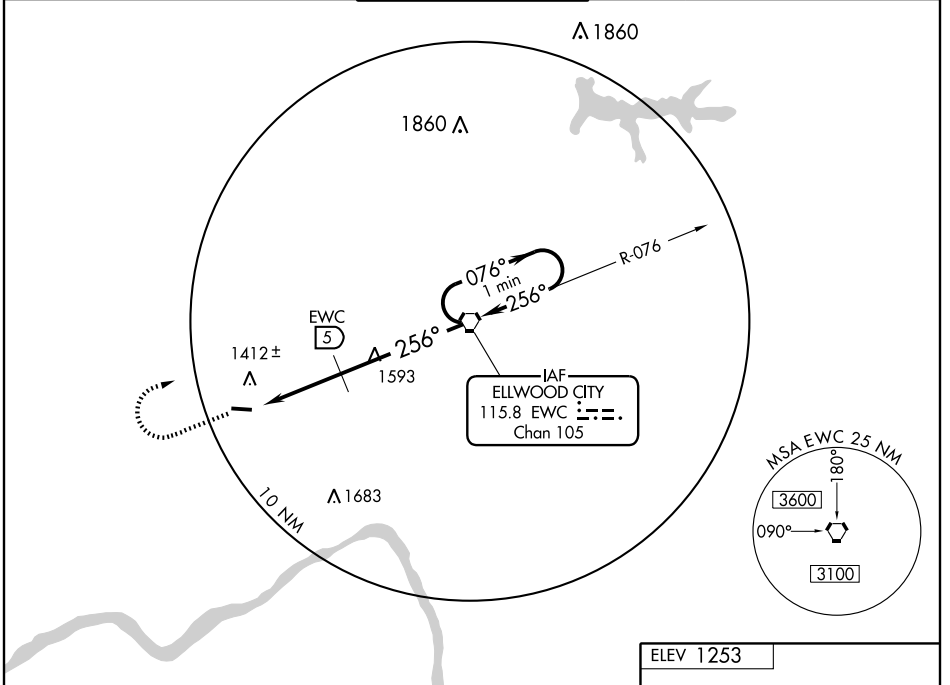
# VOR or GPS RWY 28

BEAVER FALLS / BEAVER COUNTY (BVI)

**⚠** When local altimeter setting not received, use Greater Pittsburgh altimeter setting, and increase all MDAAs 80 feet and visibility CAT C and D ½ mile.

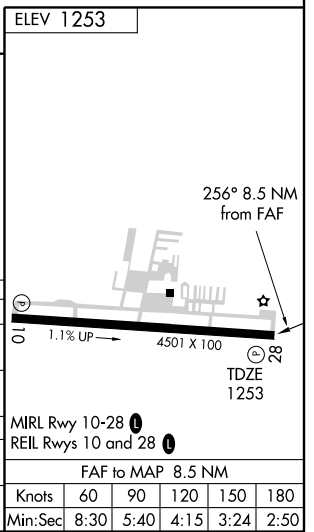
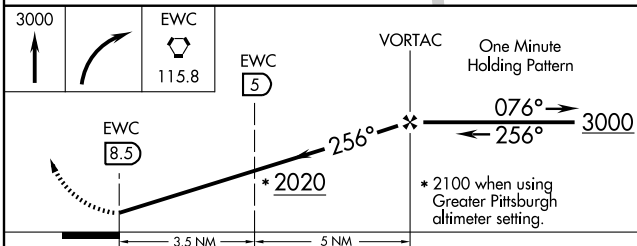
**⚠** NA MISSED APPROACH: Climb to 3000, then right turn direct EWC VORTAC and hold.

ATIS <b>118.35</b>	PITTSBURGH APP CON <b>124.75 338.2</b>	BEAVER COUNTY TOWER ★ <b>120.3 (CTAF) 0</b>	GND CON <b>121.8</b>	CLNC DEL <b>124.85</b> (when tower closed)
-----------------------	---	--	-------------------------	--



NE-4, 22 OCT 2009 to 19 NOV 2009

NE-4, 22 OCT 2009 to 19 NOV 2009



CATEGORY	A	B	C	D
S-28	2020-1 767 (800-1)	2020-1 ¼ 767 (800-1 ¼)	2020-2 ¼ 767 (800-2 ¼)	2020-2 ½ 767 (800-2 ½)
CIRCLING	2020-1 767 (800-1)	2020-1 ¼ 767 (800-1 ¼)	2020-2 ¼ 767 (800-2 ¼)	2020-2 ½ 767 (800-2 ½)
DME MINIMUMS				
S-28	1680-1 427 (500-1)	1680-1 ¼ 427 (500-1 ¼)	1680-1 ½ 427 (500-1 ½)	1680-2 427 (500-2)
CIRCLING	1720-1 467 (500-1)	1720-1 ½ 467 (500-1 ½)	1820-2 567 (600-2)	