

| | | | |
|--|------------------------|-----------------------------|---|
| WAAS CH 61300 W29A | APP CRS 296° | Rwy Idg TDZE Apt Elev | 5500 619 633 |
|--|------------------------|-----------------------------|---|

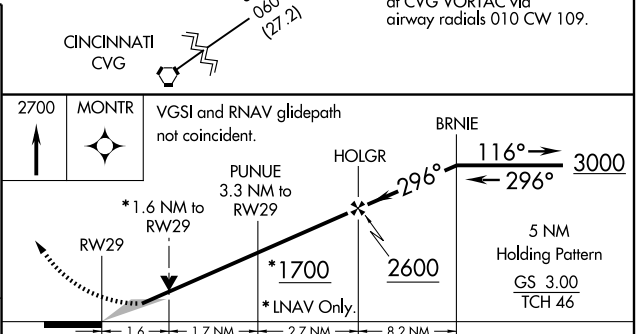
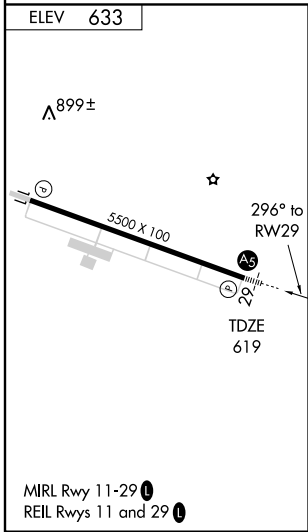
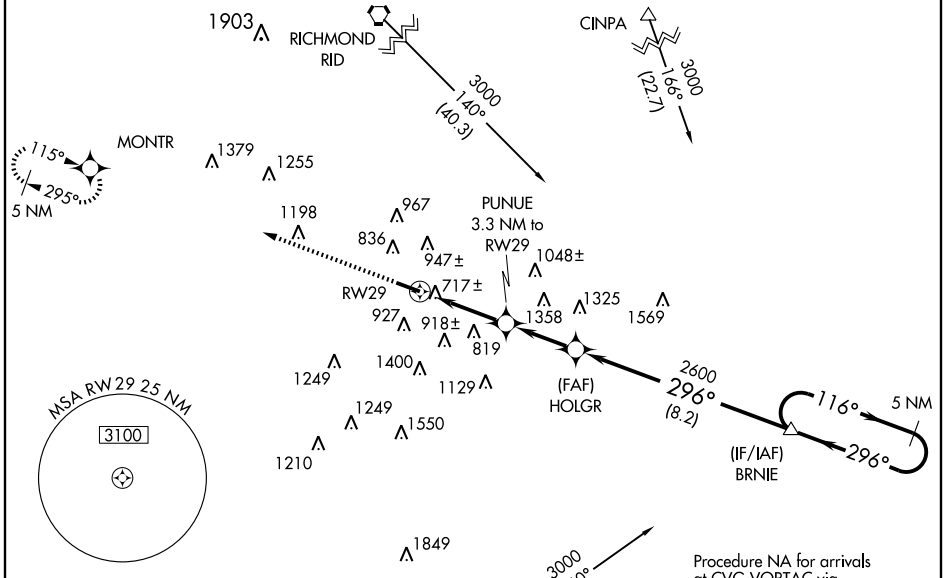
RNAV (GPS) RWY 29

HAMILTON/BUTLER COUNTY RGNL (H.A.O)

If local altimeter setting not received, use Cincinnati Muni Airport-Lunken Field altimeter setting and increase all DAs 59 feet and all MDAs 60 feet. VDP NA when using Cincinnati Muni Airport-Lunken Field altimeter setting. Baro-VNAV NA when using Cincinnati Muni Airport-Lunken Field altimeter setting. For uncompensated Baro-VNAV systems, LNAV/VNAV NA below -16°C (4°F) or above 48°C (118°F). For inoperative MALS, increase LPV visibility to 1½ all Cats and LNAV Cat A/B visibility to 1. DME/DME RNP-0.3 NA.

MALS
A5
MISSED APPROACH:
Climb to 2700 direct
MONTR and hold.

| | | | |
|------------------------|--|---------------------------|--------------------------------|
| ASOS 121.425 | CINCINNATI APP CON 121.0 257.725 | CLNC DEL 126.25 | UNICOM 123.05 (CTAF) |
|------------------------|--|---------------------------|--------------------------------|



| CATEGORY | A | B | C | D |
|--------------|-----------------------|-----------------------|-------------------------|-------------------------|
| LPV DA | | 944-¾ | 325 (400-¾) | |
| LNAV/VNAV DA | | 1128-1¼ | 509 (500-1¼) | |
| LNAV MDA | 1140-¾ | 521 (600-¾) | 1140-1 521 (600-1) | 1140-1¼ 521 (600-1¼) |
| CIRCLING | 1200-1 567 (600-1) | 1280-1 647 (700-1) | 1300-1¼ 667 (700-1¼) | 1320-2¼ 687 (700-2¼) |

EC-2, 22 OCT 2009 to 19 NOV 2009

EC-2, 22 OCT 2009 to 19 NOV 2009