

ZMBRO TWO DEPARTURE

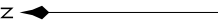
SL-5202 (FAA)

MINNEAPOLIS, MINNESOTA

6000 \ NC-1, 22 OCT 2009 to 19 NOV 2009

ATIS 120.625
CLNC DEL
121.3
MINNEAPOLIS DEP CON
126.5 357.4

MINNEAPOLIS
115.3 MSP
Chan 100
N44°53.79' - W93°14.19'

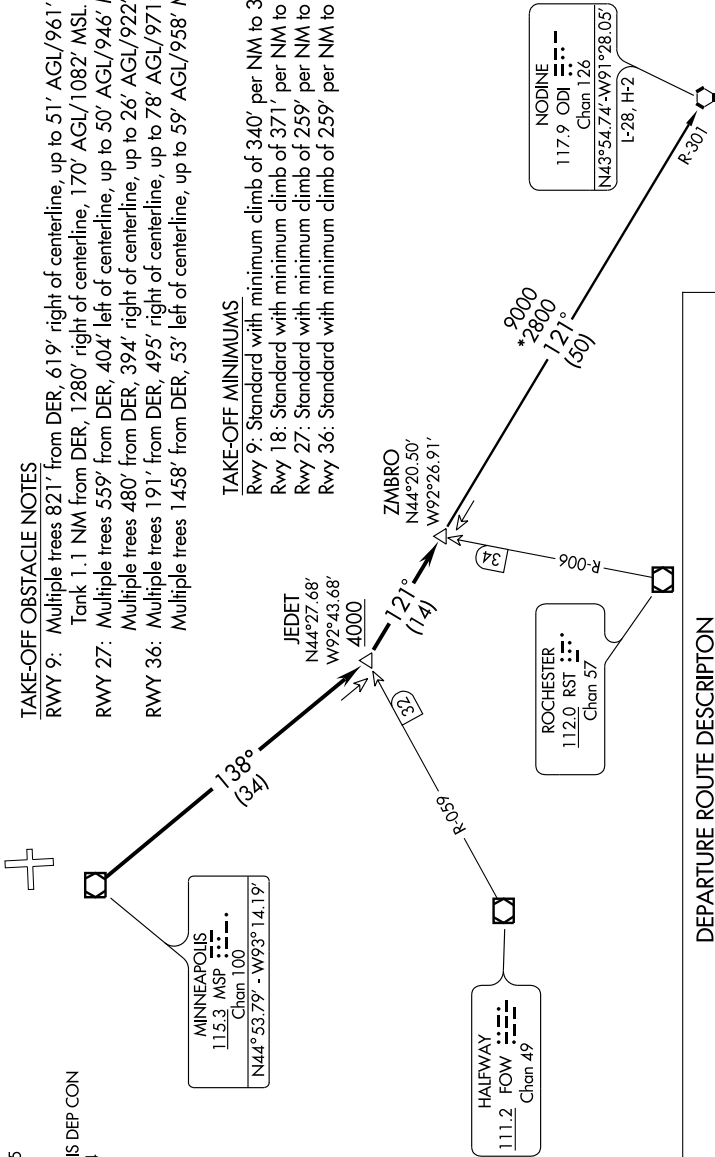


TAKE-OFF OBSTACLE NOTES

- RWY 9: Multiple trees 821' from DER, 619' right of centerline, up to 51' AGL/961' MSL. Tank 1.1 NM from DER, 1280' right of centerline, 170' AGL/1082' MSL.
- RWY 27: Multiple trees 559' from DER, 404' left of centerline, up to 50' AGL/946' MSL. Multiple trees 480' from DER, 394' right of centerline, up to 26' AGL/922' MSL.
- RWY 36: Multiple trees 191' from DER, 495' right of centerline, up to 78' AGL/971' MSL. Multiple trees 1458' from DER, 53' left of centerline, up to 59' AGL/958' MSL.

TAKE-OFF MINIMUMS

- Rwy 9: Standard with minimum climb of 340' per NM to 3000.
- Rwy 18: Standard with minimum climb of 371' per NM to 3000.
- Rwy 27: Standard with minimum climb of 259' per NM to 2800.
- Rwy 36: Standard with minimum climb of 259' per NM to 2800.



NODINE
117.9 ODI
Chan 126
N43°54.74' - W91°28.05'
L-28, H-2

ROCHESTER
112.0 RST
Chan 57

MINNEAPOLIS
115.3 MSP
Chan 100
N44°53.79' - W93°14.19'

HALFWAY
111.2 FOW
Chan 49

DEPARTURE ROUTE DESCRIPTION

TAKE-OFF ALL RUNWAYS: Fly assigned heading and altitude for radar vectors to MSP VOR/DME then via MSP R-138 to JEJET INT/ MSP 34 DME, at or above 4000; then via ODI R-301 to ZMBRO INT/ ODI 50 DME, thence via transition or assigned route. Expect clearance to filed altitude/flight level 10 (ten) minutes after departure.

NODINE TRANSITION [ZMBRO2.ODI]: From over ZMBRO INT via ODI R-301 to ODI VORTAC.

NOTE: RADAR required.
NOTE: Chart not to scale.

ZMBRO TWO DEPARTURE

NC-1, 22 OCT 2009 to 19 NOV 2009