

WLSTN TWO DEPARTURE

SL-5202 (FAA)

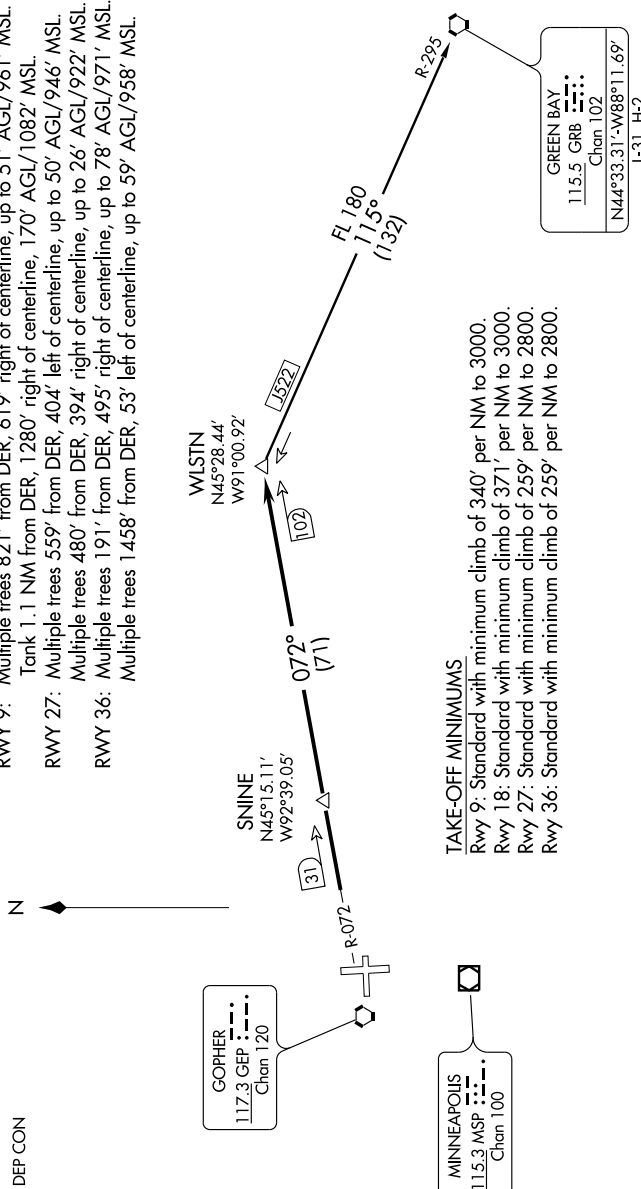
MINNEAPOLIS, MINNESOTA

6002 NOV 61 to 6002 OCT 22 '1-CN

ATIS 120.625
CLNC DEL
121.3
MINNEAPOLIS DEP CON
126.5 357.4

TAKE-OFF OBSTACLE NOTES

- RWY 9:** Multiple trees 821' from DER, 619' right of centerline, up to 51' AGL/961' MSL. Tank 1.1 NM from DER, 1280' right of centerline, 170' AGL/1082' MSL.
- RWY 27:** Multiple trees 559' from DER, 404' left of centerline, up to 50' AGL/946' MSL. Multiple trees 480' from DER, 394' right of centerline, up to 26' AGL/922' MSL.
- RWY 36:** Multiple trees 191' from DER, 495' right of centerline, up to 78' AGL/971' MSL. Multiple trees 1458' from DER, 53' left of centerline, up to 59' AGL/958' MSL.



TAKE-OFF MINIMUMS

- Rwy 9:** Standard with minimum climb of 340' per NM to 3000.
- Rwy 18:** Standard with minimum climb of 371' per NM to 3000.
- Rwy 27:** Standard with minimum climb of 259' per NM to 2800.
- Rwy 36:** Standard with minimum climb of 259' per NM to 2800.

DEPARTURE ROUTE DESCRIPTION

TAKE-OFF ALL RUNWAYS: Fly assigned heading and altitude for radar vectors to GEP R-072 to WLSTN INT//GEP 102 DME, thence via transition or assigned route. Expect clearance to filed altitude/flight level 10 (ten) minutes after departure.

GREEN BAY TRANSITION (WLSTN2.GRB): From over WLSTN INT via GRB R-295 to GRB VORTAC.

NOTE: RADAR and DME required.
NOTE: Chart not to scale.

WLSTN TWO DEPARTURE