

(UKN2.UKN) 08157

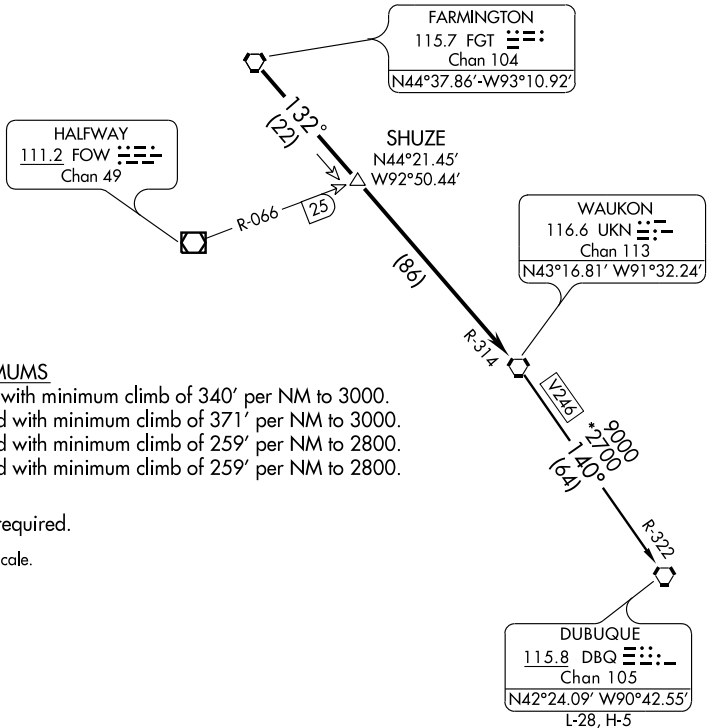
MINNEAPOLIS/ANOKA COUNTY-BLAINE AIRPORT (JANES FIELD) (ANE)

WAUKON TWO DEPARTURE

SL-5202 (FAA)

MINNEAPOLIS, MINNESOTA

ATIS 120.625
CLNC DEL
121.3
MINNEAPOLIS DEP CON
126.5 357.4



TAKE-OFF MINIMUMS

- Rwy 9: Standard with minimum climb of 340' per NM to 3000.
- Rwy 18: Standard with minimum climb of 371' per NM to 3000.
- Rwy 27: Standard with minimum climb of 259' per NM to 2800.
- Rwy 36: Standard with minimum climb of 259' per NM to 2800.

NOTE: RADAR required.

NOTE: Chart not to scale.

TAKE-OFF OBSTACLE NOTES

- RWY 9:** Multiple trees 821' from DER, 619' right of centerline, up to 51' AGL/961' MSL.
Tank 1.1 NM from DER, 1280' right of centerline, 170' AGL/1082' MSL.
- RWY 27:** Multiple trees 559' from DER, 404' left of centerline, up to 50' AGL/946' MSL.
Multiple trees 480' from DER, 394' right of centerline, up to 26' AGL/922' MSL.
- RWY 36:** Multiple trees 191' from DER, 495' right of centerline, up to 78' AGL/971' MSL.
Multiple trees 1458' from DER, 53' left of centerline, up to 59' AGL/958' MSL.



DEPARTURE ROUTE DESCRIPTION

TAKE-OFF ALL RUNWAYS: Fly assigned heading and altitude for radar vectors to FGT VORTAC then via FGT R-132 and UKN R-314 to UKN VORTAC, thence via transition or assigned route. Expect clearance to filed altitude/flight level 10 (ten) minutes after departure.

DUBUQUE TRANSITION (UKN2.DBQ): From over UKN VORTAC via UKN R-140 and DBQ R-322 to DBQ VORTAC.

WAUKON TWO DEPARTURE

MINNEAPOLIS, MINNESOTA

(UKN2.UKN) 08157

MINNEAPOLIS/ANOKA COUNTY-BLAINE AIRPORT (JANES FIELD) (ANE)

NC-1, 22 OCT 2009 to 19 NOV 2009

NC-1, 22 OCT 2009 to 19 NOV 2009