

VORTAC GEP 117.3 Chan 120	APP CRS 264°	Rwy ldg 5000 TDZE 910 Apt Elev 912
---	------------------------	---

MINNEAPOLIS/
ANOKA COUNTY-BLAINE AIRPORT (JANES FIELD) (A.N.E.)

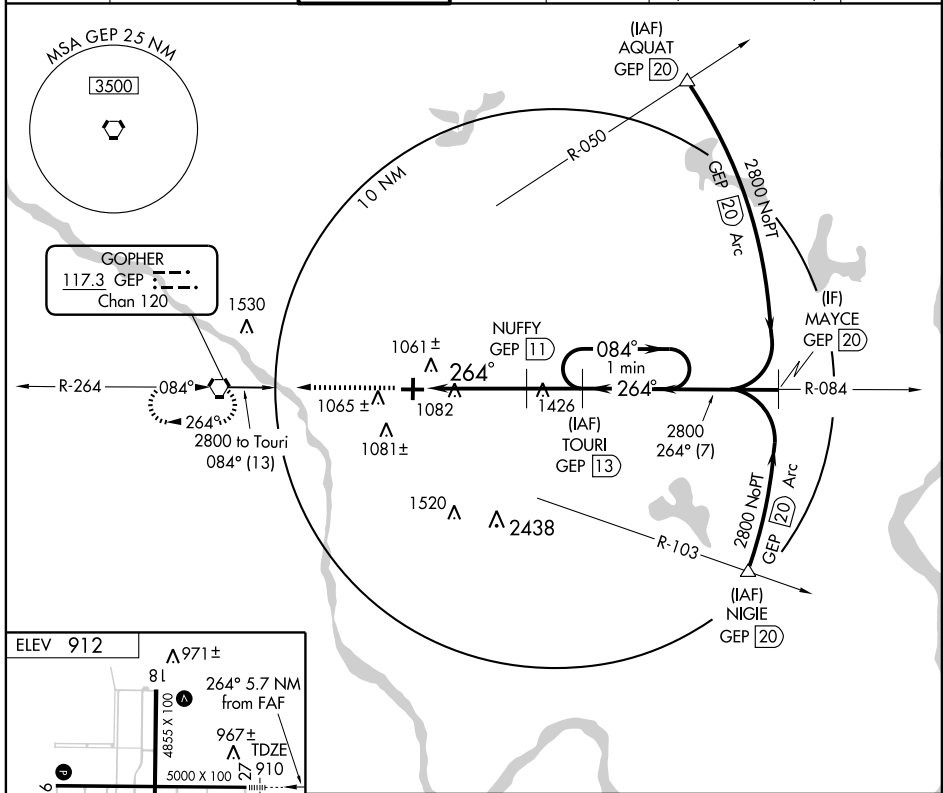
VOR/DME RWY 27

▼ DME required.
▲ When local altimeter setting not received, use Crystal altimeter setting and increase all MDA 40 feet.
VDP NA when using Crystal altimeter setting.



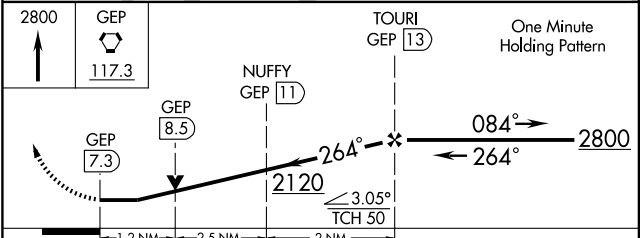
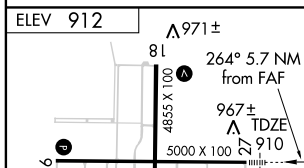
MISSED APPROACH: Climb to 2800 direct GEP VORTAC and hold.

ATIS 120.625	MINNEAPOLIS APP CON 126.5	ANOKA TOWER* 132.4 (CTAF) 1	GND CON 121.85	CLNC DEL 121.3	MINNEAPOLIS CLNC DEL 121.85 (When tower closed)	UNICOM 122.95
------------------------	-------------------------------------	--	--------------------------	--------------------------	--	-------------------------



NC-1, 22 OCT 2009 to 19 NOV 2009

NC-1, 22 OCT 2009 to 19 NOV 2009



ELEV 912	▲ 971±
81	▲ 264° 5.7 NM from FAF
4855 X 100	▲ 967± TDZE
5000 X 100	▲ 910
36	▲ 985±
964	
	HIRL Rwy 9-27 1
	MIRL Rwy 18-36 1
	REIL Rwys 9, 18 and 36 1
FAF to MAP 5.7 NM	
Knots	60 90 120 150 180
Min:Sec	5:42 3:48 2:51 2:17 1:54

CATEGORY	A	B	C	D
S-27	1340-1/2	430 (500-1/2)	1340-3/4 430 (500-1)	1340-1 430 (500-1)
CIRCLING	1400-1	488 (500-1)	1400-1/2 488 (500-1/2)	1480-2 568 (600-2)

VOR/DME RWY 27