

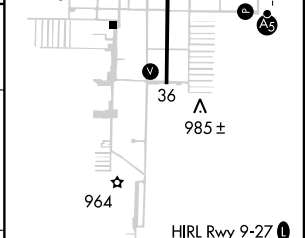
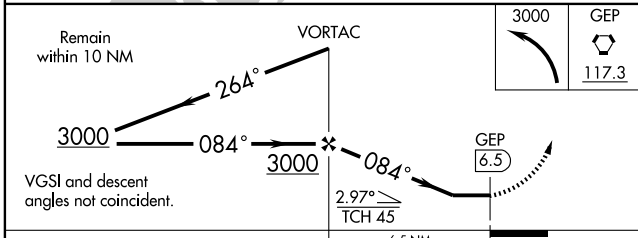
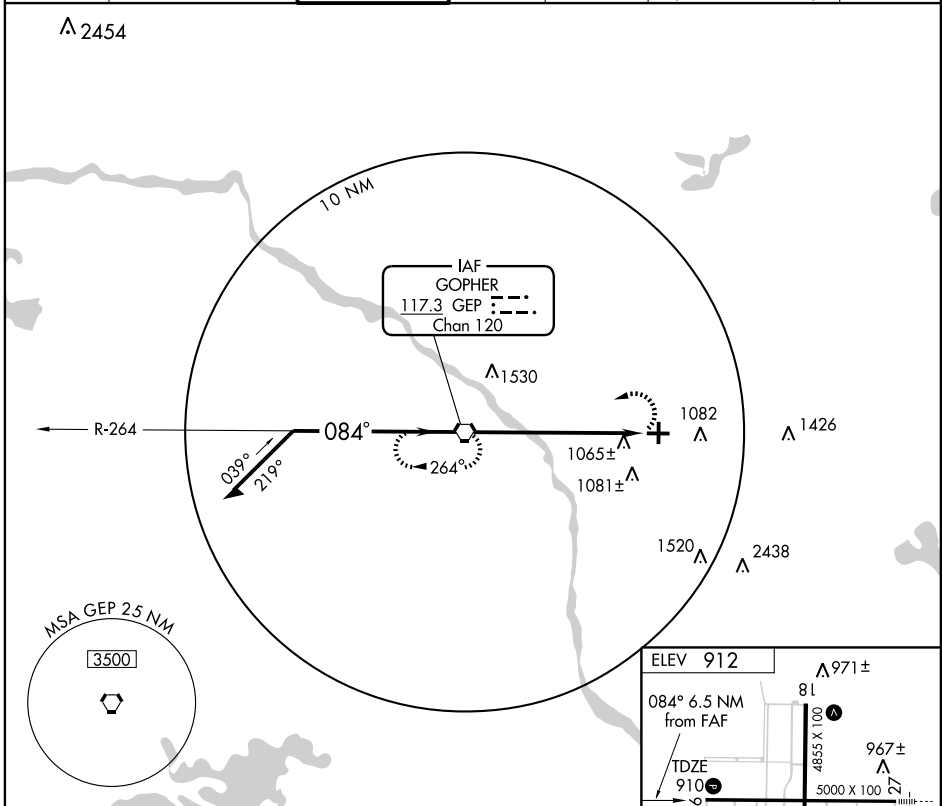
VORTAC GEP <b>117.3</b> Chan 120	APP CRS <b>084°</b>	Rwy Idg TDZE Apt Elev	<b>5000</b> <b>910</b> <b>912</b>
--	------------------------	-----------------------------	---

MINNEAPOLIS/  
ANOKA COUNTY-BLAINE AIRPORT (JANES FIELD) (A.N.E) **VOR RWY 9**

▼ Visibility reduction by helicopters NA.  
▲ When local altimeter setting not received, use Crystal altimeter setting and increase all MDA 40 feet and S-9 Cat C visibility ¼ mile.

MISSED APPROACH: Climbing left turn to 3000 direct to GEP VORTAC and hold.

ATIS <b>120.625</b>	MINNEAPOLIS APP CON <b>126.5</b>	ANOKA TOWER* <b>132.4</b> (CTAF) <b>0</b>	GND CON <b>121.85</b>	CLNC DEL <b>121.3</b>	MINNEAPOLIS CLNC DEL <b>121.85</b> (When tower closed)	UNICOM <b>122.95</b>
------------------------	-------------------------------------	--	--------------------------	--------------------------	--	-------------------------



CATEGORY	A	B	C	D
S-9	1380-1 470 (500-1)		1380-1½ 470 (500-1½)	1380-1½ 470 (500-1½)
CIRCLING	1400-1 488 (500-1)		1400-1½ 488 (500-1½)	1480-2 568 (600-2)

FAF to MAP 6.5 NM					
Knots	60	90	120	150	180
Min:Sec	6:30	4:20	3:15	2:36	2:10

NC-1, 22 OCT 2009 to 19 NOV 2009

NC-1, 22 OCT 2009 to 19 NOV 2009