

WAAS CH 82312	APP CRS 089°	Rwy Idg TDZE Apt Elev	5000 910 912
-------------------------	------------------------	-----------------------------	---

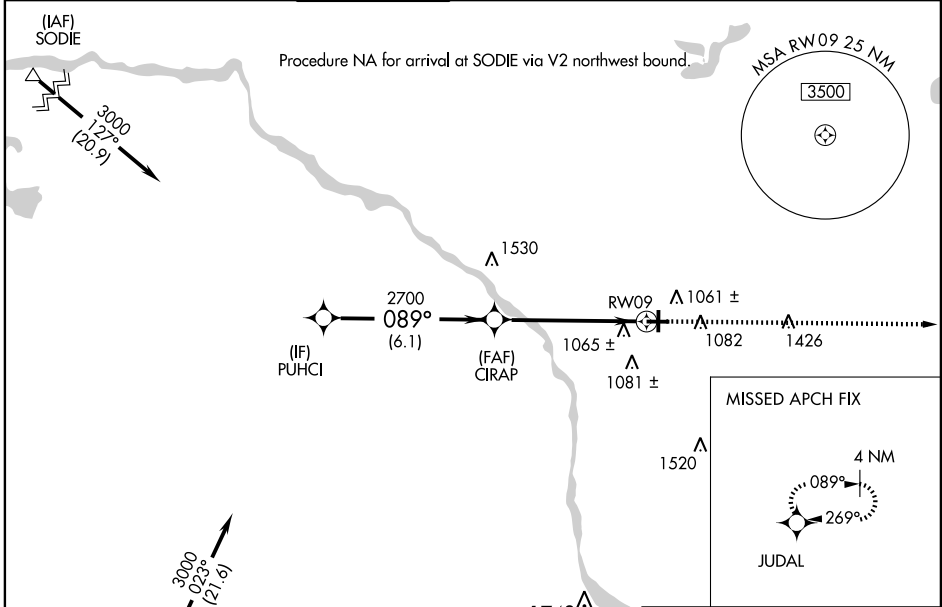
MINNEAPOLIS/
ANOKA COUNTY-BLAINE AIRPORT (JANES FIELD) (A.N.E.)

RNAV (GPS) RWY 9

⚠ Baro-VNAV NA when using Crystal altimeter setting.
⚠ For uncompensated Baro-VNAV systems, LNAV/VNAV NA below -16°C (4°F) or above 47°C (116°F). DME/DME RNP-0.3 NA. Visibility reduction by helicopters NA.
 When local altimeter setting not received, use Crystal altimeter setting and increase all DA 25 feet, all MDA 40 feet, increase LNAV/VNAV all Cats visibility ¼ mile, LNAV Cat D ¼ mile.

MISSED APPROACH: Climb to 3100 direct JUDAL and hold.

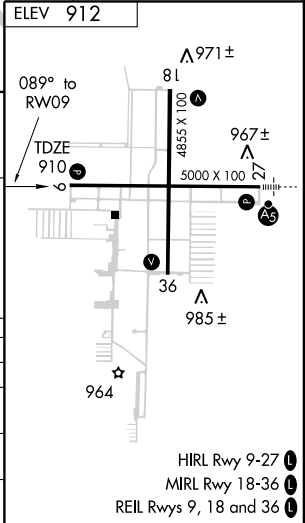
ATIS 120.625	MINNEAPOLIS APP CON 126.5	ANOKA TOWER* 132.4 (CTAF) 0	GND CON 121.85	CLNC DEL 121.3	MINNEAPOLIS CLNC DEL 121.85 (When tower closed)	UNICOM 122.95
------------------------	-------------------------------------	--	--------------------------	--------------------------	--	-------------------------



NC-1, 22 OCT 2009 to 19 NOV 2009

NC-1, 22 OCT 2009 to 19 NOV 2009

Procedure Turn NA	PUHCI		CIRAP		RWY09	
	3000		2700		3100	
GS 3.00°	089°		089°		089° to RWY09	
TCH 40	VGSIs and RNAV glidepath not coincident.				JUDAL	
	6.1 NM		5.4 NM			
CATEGORY	A	B	C	D		
LPV DA	1225-1¼		315 (400-1¼)			
LNAV/VNAV DA	1352-1½		442 (500-1½)			
LNAV MDA	1320-1	410 (500-1)	1320-1¼	410 (500-1¼)		
CIRCLING	1400-1	488 (500-1)	1400-1½	1480-2	568 (600-2)	



RNAV (GPS) RWY 9