


# RNAV (GPS) RWY 27

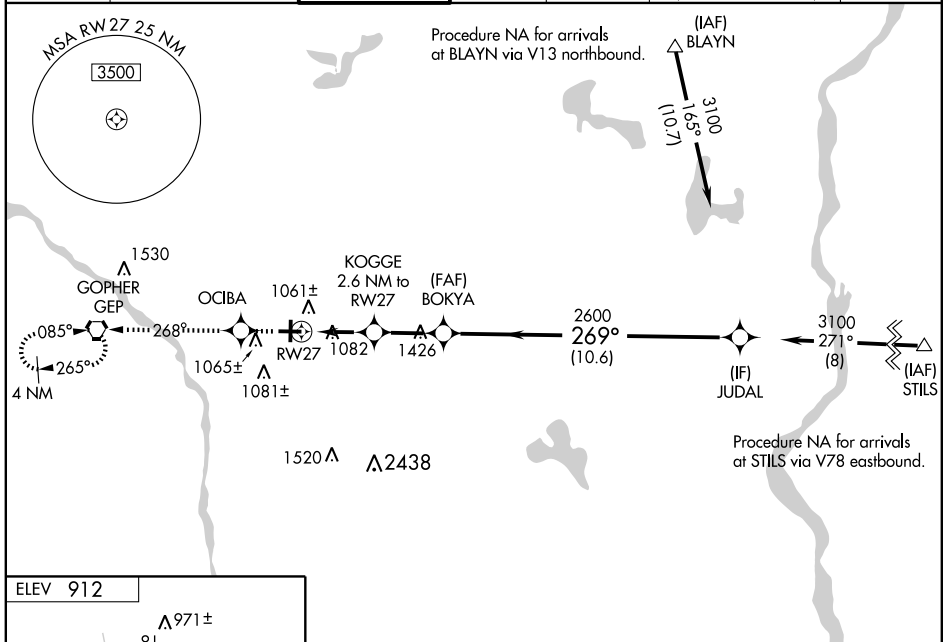
WAAS CH <b>78300</b>	APP CRS <b>269°</b>	Rwy ldg 5000
<b>W27A</b>		TDZE 910
		Apt Elev 912

MINNEAPOLIS/ ANOKA COUNTY-BLAINE AIRPORT (JANES FIELD) (A.N.E.)

**▼** Baro-VNAV and VDP NA when using Crystal altimeter setting.  
**▲** If local altimeter setting not received, use Crystal altimeter setting and increase all DAs/MDAs 40 feet.  
 For uncompensated Baro-VNAV systems, LNAV/VNAV NA below 16°C (4°F) or above 47°C (116°F).  
 DME/DME RNP-0.3 NA.  
 For inoperative MALSR, increase LNAV Cat C visibility to 1¼.

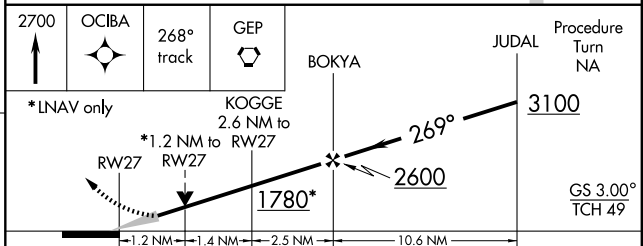
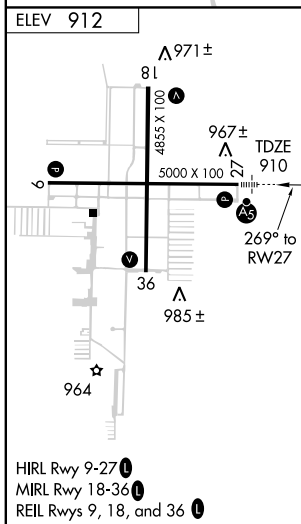
**MALSR**  
  
**MISSED APPROACH:** Climb to 2700 direct OCIBA and via 268° track to GEP VORTAC and hold.

ATIS <b>120.625</b>	MINNEAPOLIS APP CON <b>126.5</b>	ANOKA TOWER* <b>132.4</b> (CTAF) <b>0</b>	GND CON <b>121.85</b>	CLNC DEL <b>121.3</b>	MINNEAPOLIS CLNC DEL <b>121.85</b> (When tower closed)	UNICOM <b>122.95</b>
------------------------	-------------------------------------	--	--------------------------	--------------------------	--	-------------------------



NC-1, 22 OCT 2009 to 19 NOV 2009

NC-1, 22 OCT 2009 to 19 NOV 2009



CATEGORY	A	B	C	D
LPV DA	1160-½ 250 (300-½)			
LNAV/VNAV DA	1371-1 461 (500-1)			
LNAV MDA	1340-½ 430 (500-½)		1340-1 430 (500-1)	
CIRCLING	1400-1 488 (500-1)		1400-1½ 1480-2 568 (600-2)	

# RNAV (GPS) RWY 27