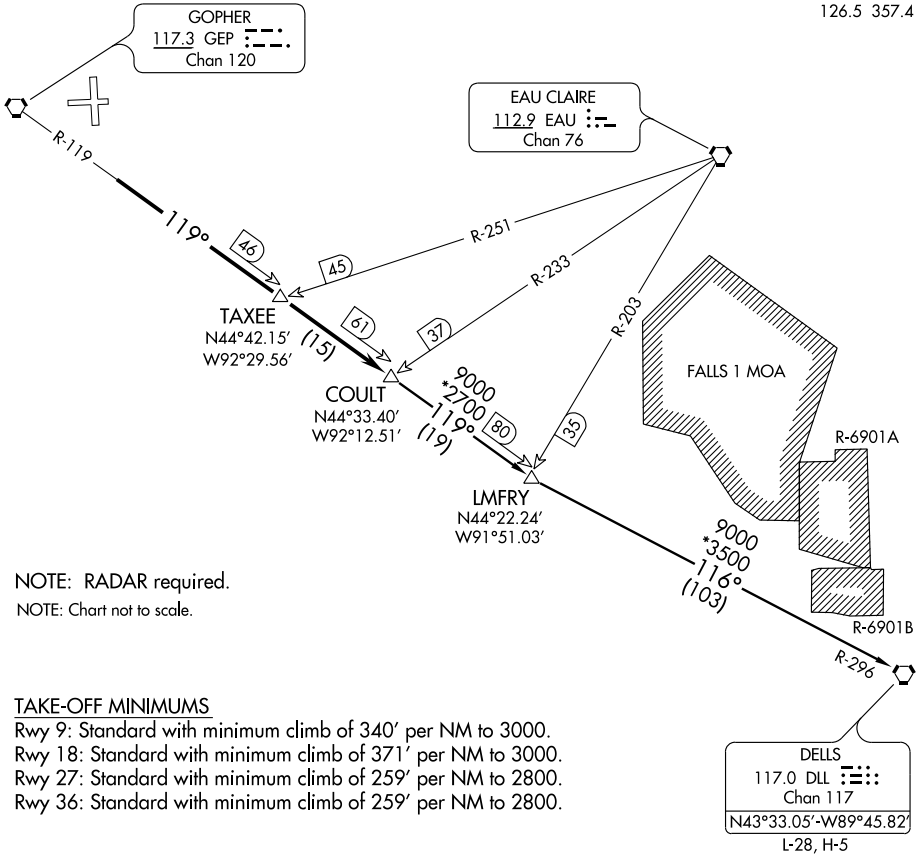


COULT TWO DEPARTURE

SL-5202 (FAA)

MINNEAPOLIS, MINNESOTA

ATIS 120.625
CLNC DEL 121.3
MINNEAPOLIS DEP CON 126.5 357.4



NOTE: RADAR required.
NOTE: Chart not to scale.

TAKE-OFF MINIMUMS

- Rwy 9: Standard with minimum climb of 340' per NM to 3000.
- Rwy 18: Standard with minimum climb of 371' per NM to 3000.
- Rwy 27: Standard with minimum climb of 259' per NM to 2800.
- Rwy 36: Standard with minimum climb of 259' per NM to 2800.

TAKE-OFF OBSTACLE NOTES

- RWY 9: Multiple trees 821' from DER, 619' right of centerline, up to 51' AGL/961' MSL.
Tank 1.1 NM from DER, 1280' right of centerline, 170' AGL/1082' MSL.
- RWY 27: Multiple trees 559' from DER, 404' left of centerline, up to 50' AGL/946' MSL.
Multiple trees 480' from DER, 394' right of centerline, up to 26' AGL/922' MSL.
- RWY 36: Multiple trees 191' from DER, 495' right of centerline, up to 78' AGL/971' MSL.
Multiple trees 1458' from DER, 53' left of centerline, up to 59' AGL/958' MSL.

DEPARTURE ROUTE DESCRIPTION

TAKE-OFF ALL RUNWAYS: Fly assigned heading and altitude for radar vectors to intercept GEP R-119 to COULT INT/GEP 61 DME, thence via transition or assigned route. Expect clearance to filed altitude/flight level 10 (ten) minutes after departure.

DELLS TRANSITION (COULT2.DLL): From over COULT INT via GEP R-119 and DLL R-296 to DLL VORTAC.

COULT TWO DEPARTURE

NC-1, 22 OCT 2009 to 19 NOV 2009

NC-1, 22 OCT 2009 to 19 NOV 2009