

THIEF RIVER FALLS, MINNESOTA

AL-5201 (FAA)

# VOR/DME RWY 31

THIEF RIVER FALLS RGNL (TVF)

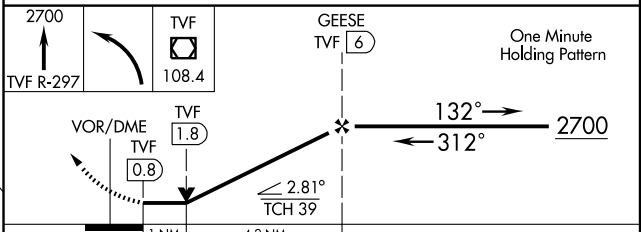
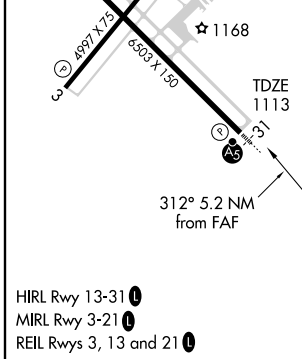
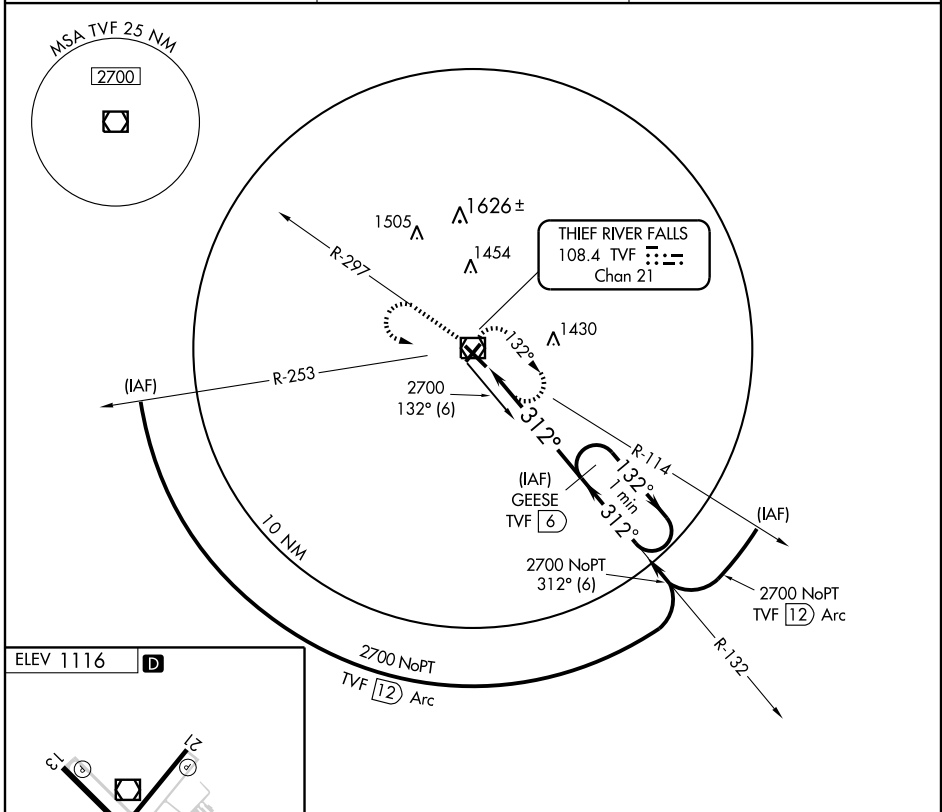
VOR/DME TVF <b>108.4</b> Chan 21	APP CRS <b>312°</b>	Rwy Idg TDZE <b>1113</b> Apt Elev <b>1116</b>
--	------------------------	---

**V** Increase S-31 Cat D visibility ¼ mile for inoperative MALSR. Circling to Rwy 3/21 NA.

MALSR

MISSED APPROACH: Climb to 2700 via TVF R-297 then left turn direct TVF VOR/DME and hold.

AWOS-3 <b>108.4</b>	MINNEAPOLIS CENTER <b>132.15 269.6</b>	UNICOM <b>122.8</b> (CTAF) <b>1</b>
------------------------	---	--



CATEGORY	A	B	C	D
S-31	1480-½ 367 (400-½)			1480-1 367 (400-1)
CIRCLING	1540-1 424 (500-1)	1580-1 464 (500-1)	1580-1½ 464 (500-1½)	1680-2 564 (600-2)

THIEF RIVER FALLS, MINNESOTA  
Amdt 3C 09295

48°04'N - 96°11'W

# THIEF RIVER FALLS RGNL (TVF) VOR/DME RWY 31

NC-1, 22 OCT 2009 to 19 NOV 2009

NC-1, 22 OCT 2009 to 19 NOV 2009