

THIEF RIVER FALLS, MINNESOTA


AL-5201 (FAA)

LOM HY	APP CRS	Rwy Idg	6503
260	309°	TDZE	1115
		Apt Elev	1119


NDB RWY 31

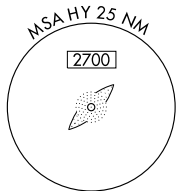
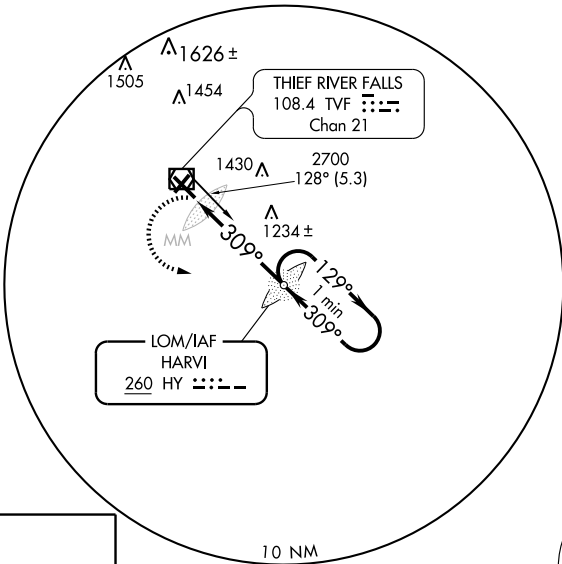
THIEF RIVER FALLS RGNL (TVF)

NA Circling to Rwy 3/21 NA. When local altimeter setting not received, use Crookston altimeter setting and increase all MDA 100 feet and increase S-31 Cat C visibility 1/4 mile and Cat D visibility 1/2 mile.

MALSR 


MISSED APPROACH: Climbing left turn to 2700 direct HY LOM and hold.




AWOS-3 108.4	MINNEAPOLIS CENTER 132.15 269.6	UNICOM 122.8 (CTAF) 
------------------------	---	---



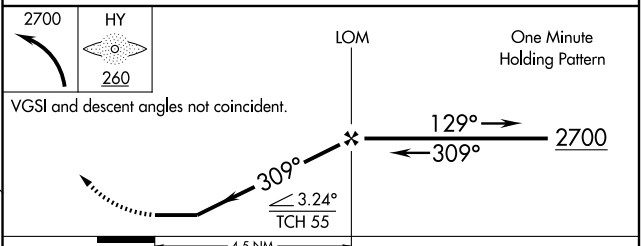
NC-1, 22 OCT 2009 to 19 NOV 2009

NC-1, 22 OCT 2009 to 19 NOV 2009

ELEV 1119 

HIRL Rwy 13-31 
 MIRL Rwy 3-21 
 REIL Rwys 3, 13 and 21 
 FAF to MAP 4.5 NM

Knots	60	90	120	150	180
Min:Sec	4:30	3:00	2:15	1:48	1:30



CATEGORY	A	B	C	D
S-31	1540-3/4 425 (500-3/4)			1540-1 425 (500-1)
CIRCLING	1540-1 421 (500-1)	1580-1 461 (500-1)	1580-1 1/2 461 (500-1 1/2)	1680-2 561 (600-2)

THIEF RIVER FALLS, MINNESOTA
 Amdt 2 09295

48°04'N - 96°11'W

THIEF RIVER FALLS RGNL (TVF) NDB RWY 31