


ILS or LOC RWY 31

THIEF RIVER FALLS RGNL (TVF)

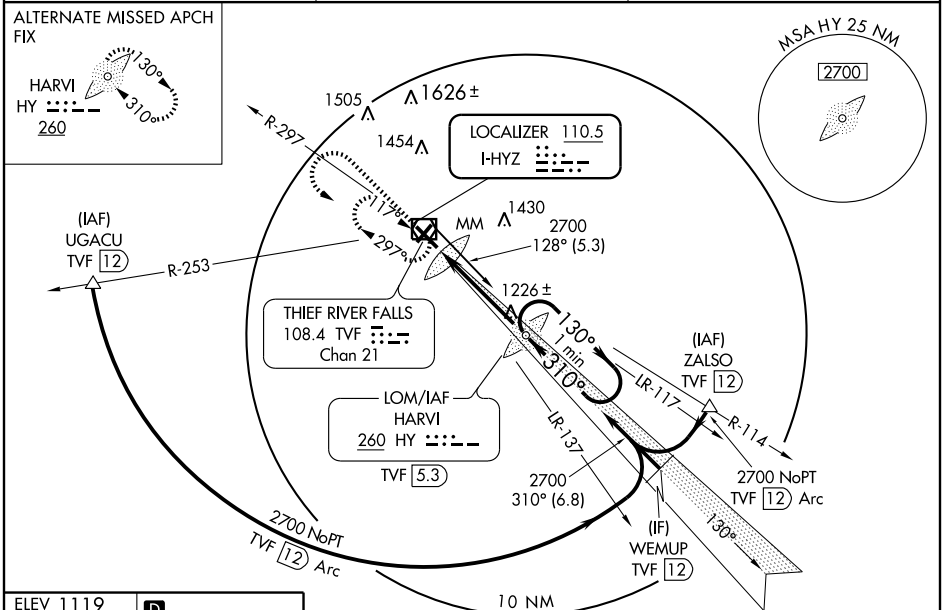
LOC I-HYZ 110.5	APP CRS 310°	Rwy Idg TDZE Apt Elev	6503 1115 1119
---------------------------	------------------------	-----------------------------	---

NA When local altimeter setting not received, use Crookston altimeter setting and increase all DA 82 feet, and all MDA 100 feet and increase S-LOC Cat C/D visibility 1/4 mile. For inoperative MALSRR when using Crookston altimeter setting, increase visibility S-ILS 31 all Cats to 1 mile. Circling to Rwy 3/21 NA.

MALSRR 

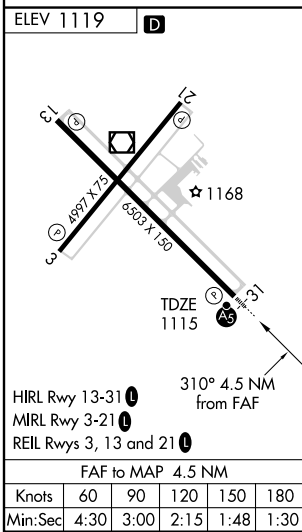
MISSED APPROACH: Climb to 2700 then left turn direct TVF VOR/DME and hold.

AWOS-3 108.4	MINNEAPOLIS CENTER 132.15 269.6	UNICOM 122.8 (CTAF) 0
------------------------	---	---------------------------------

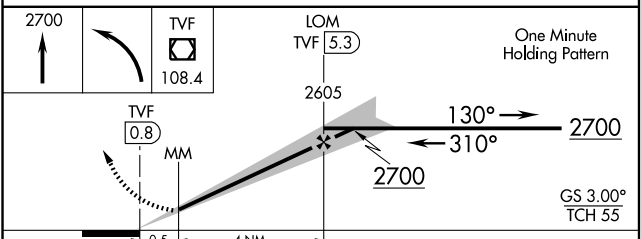


NC-1, 22 OCT 2009 to 19 NOV 2009

NC-1, 22 OCT 2009 to 19 NOV 2009



ADF or DME REQUIRED



CATEGORY	A	B	C	D
S-ILS 31	1315-1/2 200 (200-1/2)			
S-LOC 31	1480-1/2 365 (400-1/2)			1480-3/4 365 (400-3/4)
CIRCLING	1540-1 421 (500-1)	1580-1 461 (500-1)	1580-1 1/2 461 (500-1 1/2)	1680-2 561 (600-2)