

REDWOOD FALLS, MINNESOTA

AL-5200 (FAA)

VOR-A

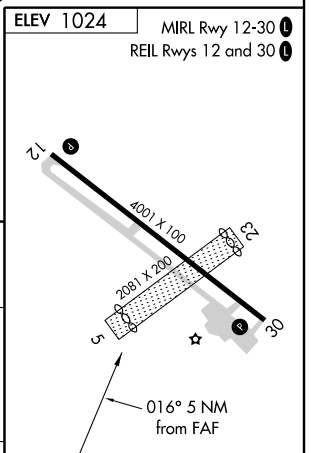
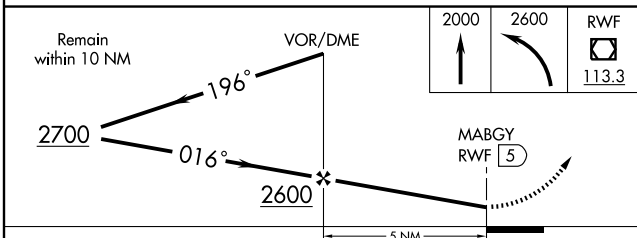
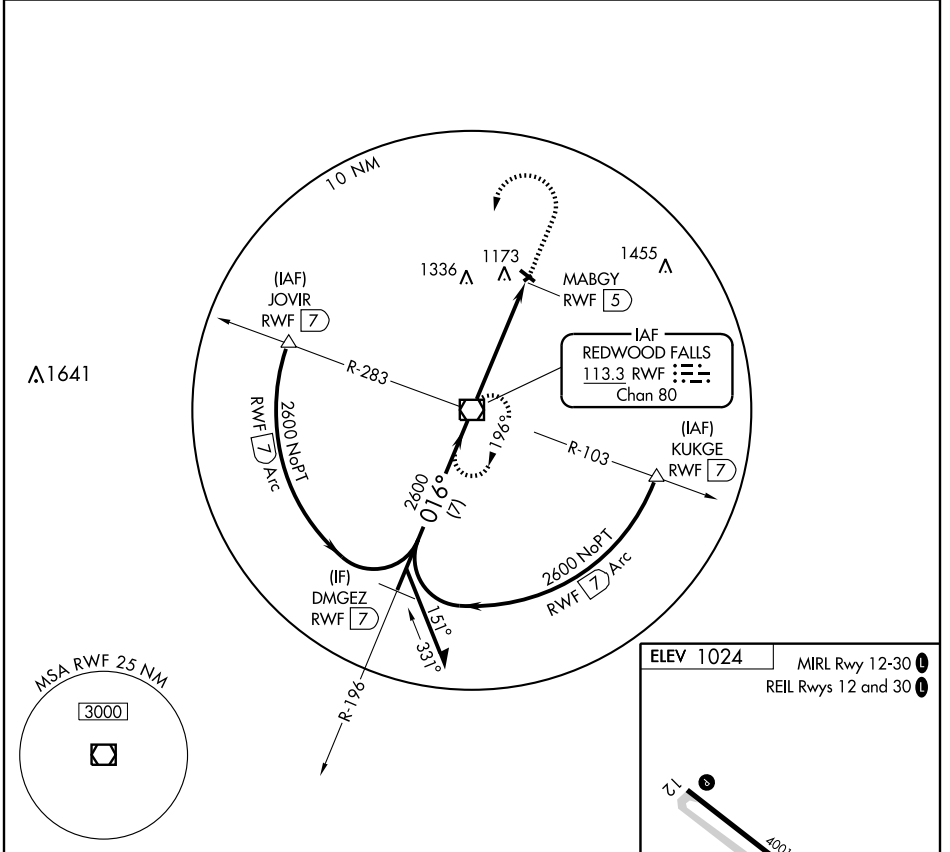
REDWOOD FALLS MUNI (RWF)

VOR/DME RWF <b>113.3</b> Chan <b>80</b>	APP CRS <b>016°</b>	Rwy Idg TDZE Apt Elev <b>1024</b>	<b>N/A</b> <b>N/A</b> <b>1024</b>
---	------------------------	--	---

**⚠** When local altimeter setting not received, use Olivia Rgnl altimeter setting and increase all MDA 40 feet.

**⚠** MISSED APPROACH: Climb to 2000 then climbing left turn to 2600 direct RWF VOR/DME and hold.

ASOS <b>126.575</b>	MINNEAPOLIS CENTER <b>127.1 290.2</b>	UNICOM <b>123.0 (CTAF)</b>
------------------------	--	-------------------------------



CATEGORY	FAF to MAP 5 NM			
	A	B	C	D
CIRCLING	1540-1 516 (600-1)	1580-1 556 (600-1)	1580-1½ 556 (600-1½)	1700-2¼ 676 (700-2¼)

Knots	FAF to MAP 5 NM				
	60	90	120	150	180
Min:Sec	5:00	3:20	2:30	2:00	1:40

REDWOOD FALLS, MINNESOTA  
Amdt 5 09071

44°33'N - 95°05'W

REDWOOD FALLS MUNI (RWF)  
VOR-A

NC-1, 22 OCT 2009 to 19 NOV 2009

NC-1, 22 OCT 2009 to 19 NOV 2009