

REDWOOD FALLS, MINNESOTA

AL-5200 (FAA)

# RNAV (GPS) RWY 30

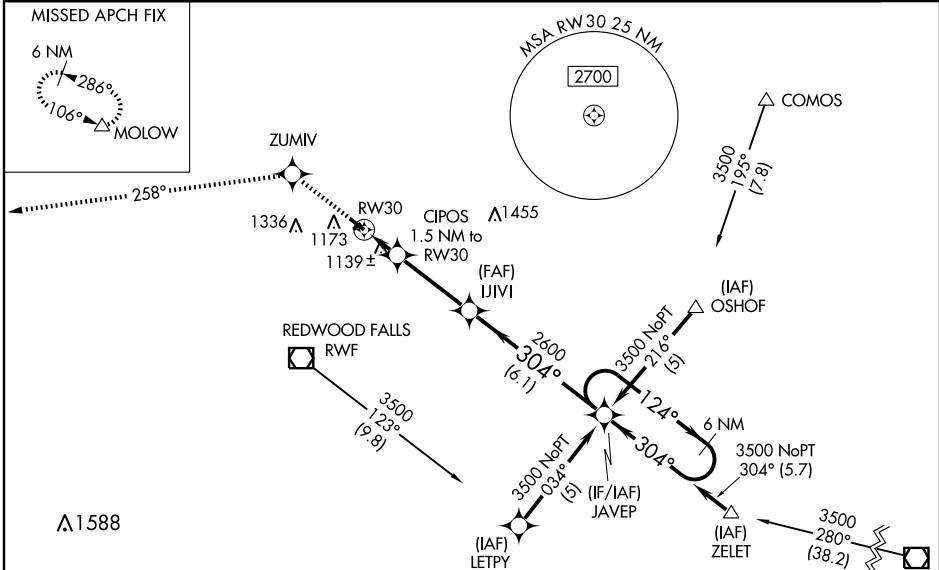
REDWOOD FALLS MUNI (RWF)

WAAS CH <b>86610</b> W30A	APP CRS <b>304°</b>	Rwy Idg TDZE Apt Elev	<b>4001</b> <b>1024</b> <b>1024</b>
---------------------------------	------------------------	-----------------------------	---

**⚠** DME/DME RNP -0.3 NA. Visibility reduction by helicopters NA.  
**⚠** For uncompensated Baro-VNAV systems, LNAV/VNAV NA below -17°C (2°F) or above 46°C (114°F).  
 Baro-VNAV NA when using Olivia Rgnl altimeter setting.  
 When local altimeter setting not received, use Olivia Rgnl altimeter setting and increase all DA/MDA 40 feet and LNAV Cat C visibility ¼ mile.

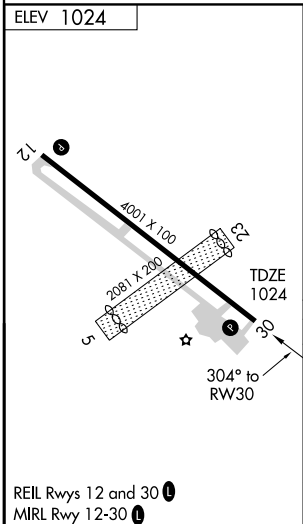
**MISSED APPROACH:** Climb to 3800 direct ZUMIV and via 258° track to MOLOW and hold.

ASOS <b>126.575</b>	MINNEAPOLIS CENTER <b>127.1 290.2</b>	UNICOM <b>123.0 (CTAF) 0</b>
------------------------	--	---------------------------------

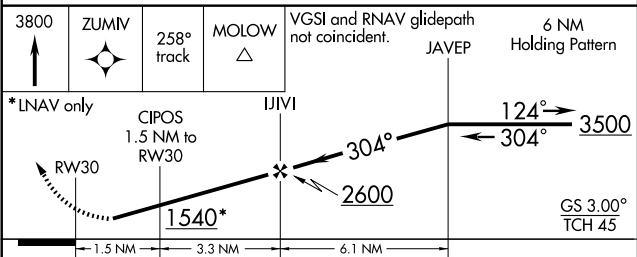


NC-1, 22 OCT 2009 to 19 NOV 2009

NC-1, 22 OCT 2009 to 19 NOV 2009



Procedure NA for arrivals at MKT VOR/DME via V250 northeast bound.



CATEGORY	A	B	C	D
LPV DA	1304-1 280 (300-1)			
LNAV/VNAV DA	1440-1½ 416 (500-1½)			
LNAV MDA	1400-1 376 (400-1)			1400-1¼ 376 (400-1¼)
CIRCLING	1480-1 456 (500-1)	1580-1 556 (600-1)	1580-1½ 556 (600-1½)	1700-2¼ 676 (700-2¼)

REDWOOD FALLS, MINNESOTA  
 Orig 09071

44°33'N-95°05'W

# REDWOOD FALLS MUNI (RWF) RNAV (GPS) RWY 30