

# RNAV (GPS) RWY 6

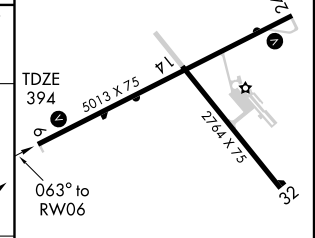
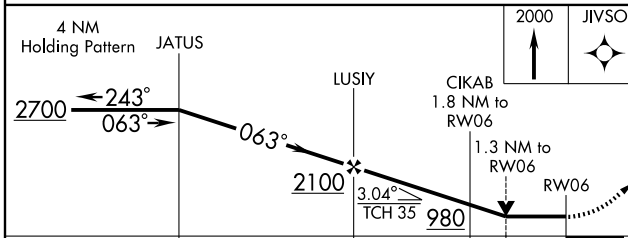
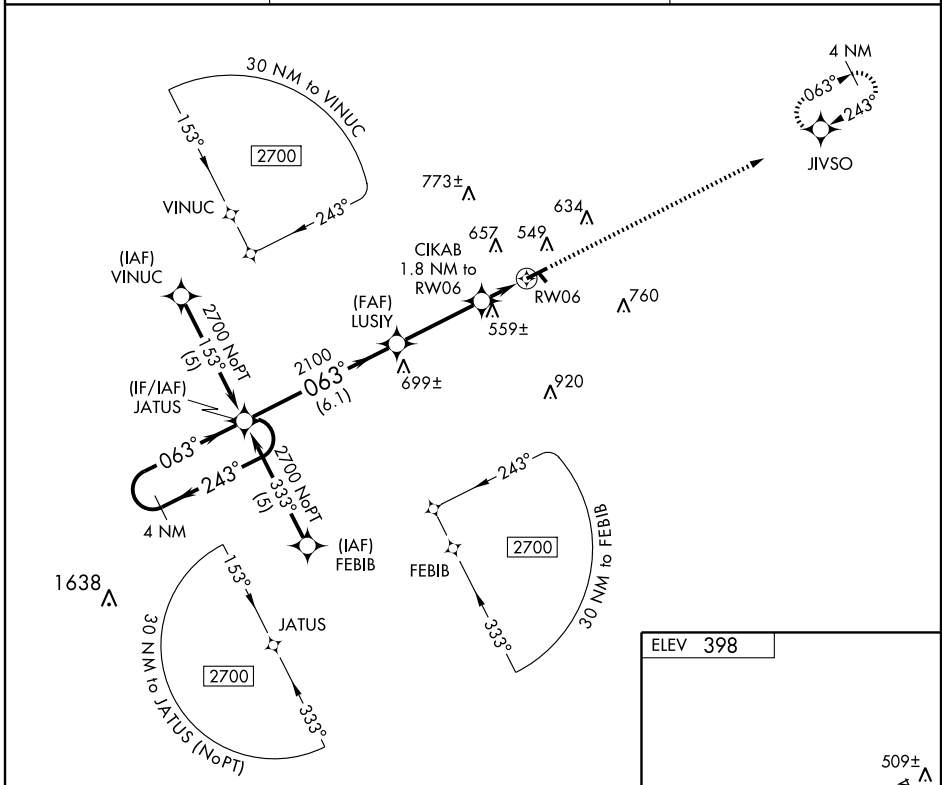
HARRISBURG-RALEIGH (HSB)

APP CRS	Rwy Idg	<b>5013</b>
<b>063°</b>	TDZE	<b>394</b>
	Apt Elev	<b>398</b>

**▼** When local altimeter setting not received, use Williamson County Rgnl altimeter setting and increase all MDAs 80 feet and increase LNAV and Circling Cats. C and D visibilities ¼ mile. VDP NA when using Williamson County Rgnl altimeter setting. Visibility reduction by helicopters NA. DME/DME RNP-0.3 NA.

**▲** MISSED APPROACH: Climb to 2000 direct JIVSO and hold.

AWOS-3 <b>135.925</b>	KANSAS CITY CENTER <b>125.3 269.5</b>	UNICOM <b>122.8 (CTAF) 0</b>
--------------------------	--	---------------------------------



CATEGORY	A	B	C	D
LNAV MDA	820-1	426 (500-1)	820-1¼	426 (500-1¼)
CIRCLING	880-1 482 (500-1)	1020-1 622 (700-1)	1020-1¾ 622 (700-1¾)	1020-2 622 (700-2)

REIL Rwy 6 and 24 0  
MRL Rwy 6-24 and 14-32 0

EC-3, 22 OCT 2009 to 19 NOV 2009

EC-3, 22 OCT 2009 to 19 NOV 2009