

# RNAV (GPS) RWY 25

AIKEN MUNI (AIK)

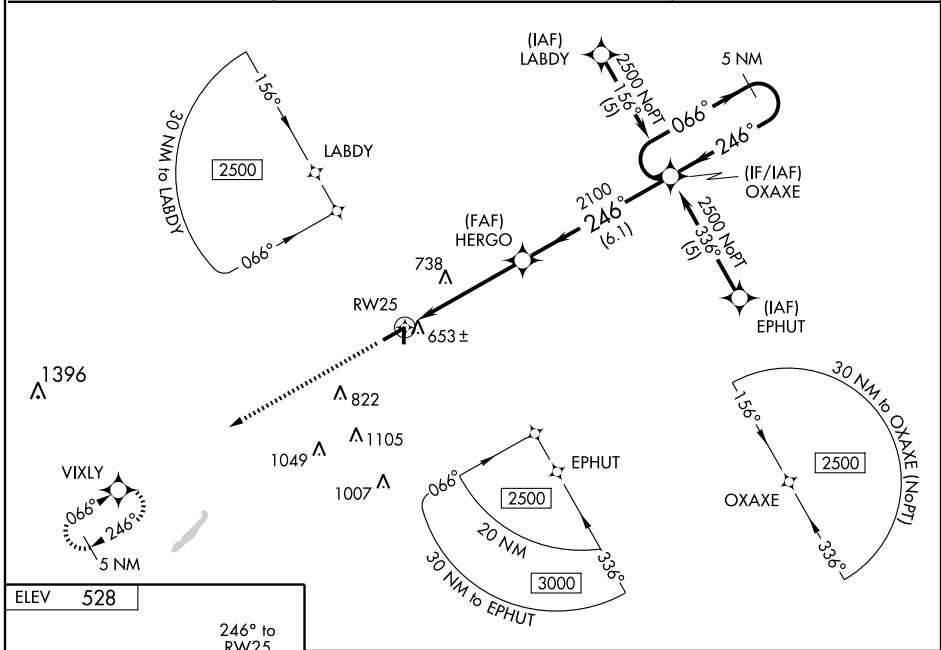
WAAS CH <b>50301</b> W25A	APP CRS <b>246°</b>	Rwy Idg TDZE Apt Elev	<b>5500</b> <b>494</b> <b>528</b>
---------------------------------	------------------------	-----------------------------	---

**▽** If local altimeter setting not received, used Augusta Rgnl at Bush Field altimeter setting and increase LPV DA to 865 feet, LNAV/VNAV DA to 1007 feet, and all MDAs 120 feet. DME/DME RNP-0.3 NA.  
**△ NA** Inoperative table does not apply. Baro-VNAV NA when using Augusta Rgnl at Bush Field altimeter setting. For uncompensated Baro-VNAV systems, LNAV/VNAV NA below -16°C (4°F) or above 96°C (205°F). Visibility reduction by helicopters NA.



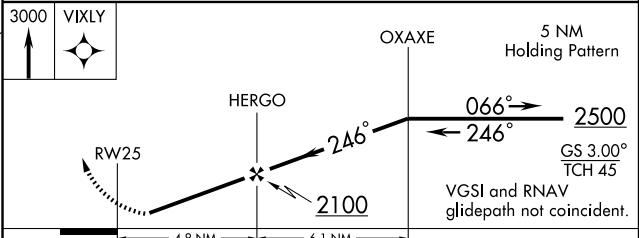
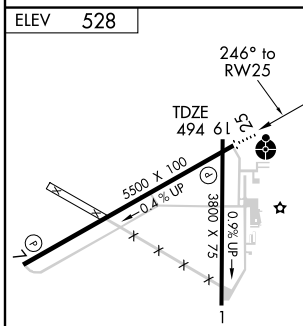
MISSED APPROACH: Climb to 3000 direct VIXLY and hold.

AWOS-3 <b>118.025</b>	AUGUSTA APP CON ★ <b>119.15 284.625</b>	UNICOM <b>122.8 (CTAF) 0</b>
--------------------------	--	---------------------------------



SE-2, 22 OCT 2009 to 19 NOV 2009

SE-2, 22 OCT 2009 to 19 NOV 2009



CATEGORY	A	B	C	D
LPV DA	761-1 267 (300-1)			NA
LNAV/VNAV DA	903-1½ 409 (400-1½)			NA
LNAV MDA	1000-1 506 (500-1)		1000-1½ 506 (500-1½)	NA
CIRCLING	1000-1½ 472 (500-1½)			NA

REIL Rwy 25  
MIRL Rwy 1-19  
MIRL Rwy 7-25 0