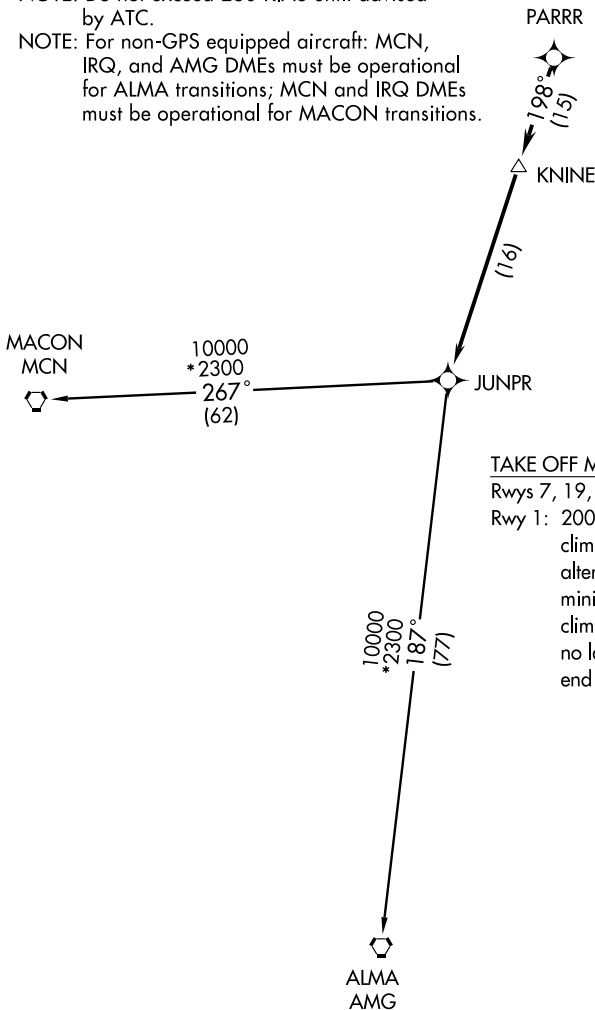


JUNPR TWO DEPARTURE (RNAV)

AUGUSTA DEP CON ★
119.15 284.625
CTAF
122.8



- NOTE: RNAV 1.
- NOTE: RADAR Required.
- NOTE: DME/DME/IRU or GPS Required.
- NOTE: Do not exceed 230 KIAS until advised by ATC.
- NOTE: For non-GPS equipped aircraft: MCN, IRQ, and AMG DMEs must be operational for ALMA transitions; MCN and IRQ DMEs must be operational for MACON transitions.



TAKE OFF MINIMUMS:

Rwys 7, 19, 25: STANDARD.

Rwy 1: 200-1¼ or STANDARD with minimum climb of 220' per NM to 800, or alternatively, with standard takeoff minimums and a normal 200'/NM climb gradient, takeoff must occur no later than 1400' from departure end of runway.

NOTE: Chart not to scale.

(NARRATIVE ON FOLLOWING PAGE)

JUNPR TWO DEPARTURE (RNAV)