

# DOVER TWO DEPARTURE (RNAV)

SE-2, 22 OCT 2009 to 19 NOV 2009

AUGUSTA DEP CON ★  
119.15 284.625  
CTAF  
122.8

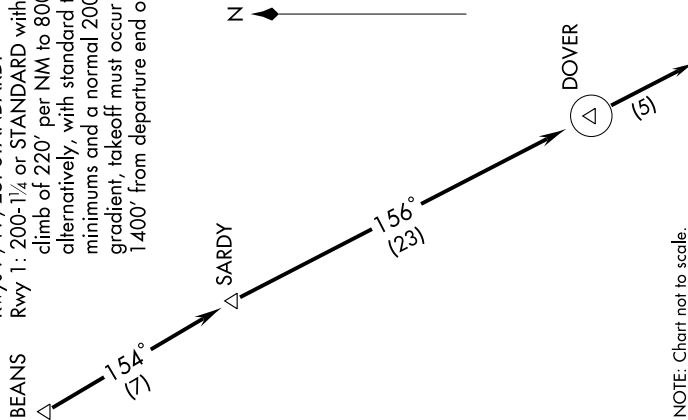
- NOTE: RNAV 1.
- NOTE: RADAR Required.
- NOTE: DME/DME/IRU or GPS Required.
- NOTE: Do not exceed 230 KIAS until advised by ATC.
- NOTE: For non-GPS equipped aircraft: DBN and IRQ DMEs must be operational.

## DEPARTURE ROUTE DESCRIPTION

TAKEOFF RWY 1, 7, 19, 25: Climb heading assigned by ATC, expect vectors to BEANS, then via depicted route to DOVER, then fly heading 156°, expect radar vectors. Thence . . .

. . . maintain altitude assigned by ATC. Expect clearance to filed altitude/flight level within 10 minutes after departure.

**TAKEOFF MINIMUMS:**  
Rwys 7, 19, 25: STANDARD.  
Rwy 1: 200-1/4 or STANDARD with minimum climb of 220' per NM to 800, or alternatively, with standard takeoff minimums and a normal 200'/NM climb gradient. takeoff must occur no later than 1400' from departure end of runway.



NOTE: Chart not to scale.

## TAKEOFF OBSTACLE NOTES:

- Rwy 1: Terrain 74' from DER, 9' left of centerline, 496' MSL. Numerous trees beginning 169' from DER, 35' left of centerline, up to 100' AGL/659' MSL. Tree 6,023' from DER, 1,609' left of centerline, up to 100' AGL/649' MSL. Terrain beginning 75' from DER, 246' right of centerline up to 496' MSL. Numerous trees beginning 1,322' from DER, 241' right of centerline, up to 100' AGL/609' MSL.
- Rwy 7: Terrain beginning 51' from DER, 207' right of centerline, up to 499' MSL. Numerous trees beginning 1,230' from DER, 550' right of centerline, up to 100' AGL/609' MSL. Numerous trees beginning 1,601' from DER, 731' left of centerline, up to 56' AGL/563' MSL.
- Rwy 19: Numerous trees beginning at DER, 110' right of centerline, up to 100' AGL/629' MSL. Numerous trees beginning 6' from DER, 82' left of centerline, up to 100' AGL/639' MSL.
- Rwy 25: Tree 1,244' from DER, 766' right of centerline, 73' AGL/572' MSL. Tree 1,506' from DER, 661' left of centerline, 72' AGL/561' MSL.

# DOVER TWO DEPARTURE (RNAV)

SE-2, 22 OCT 2009 to 19 NOV 2009