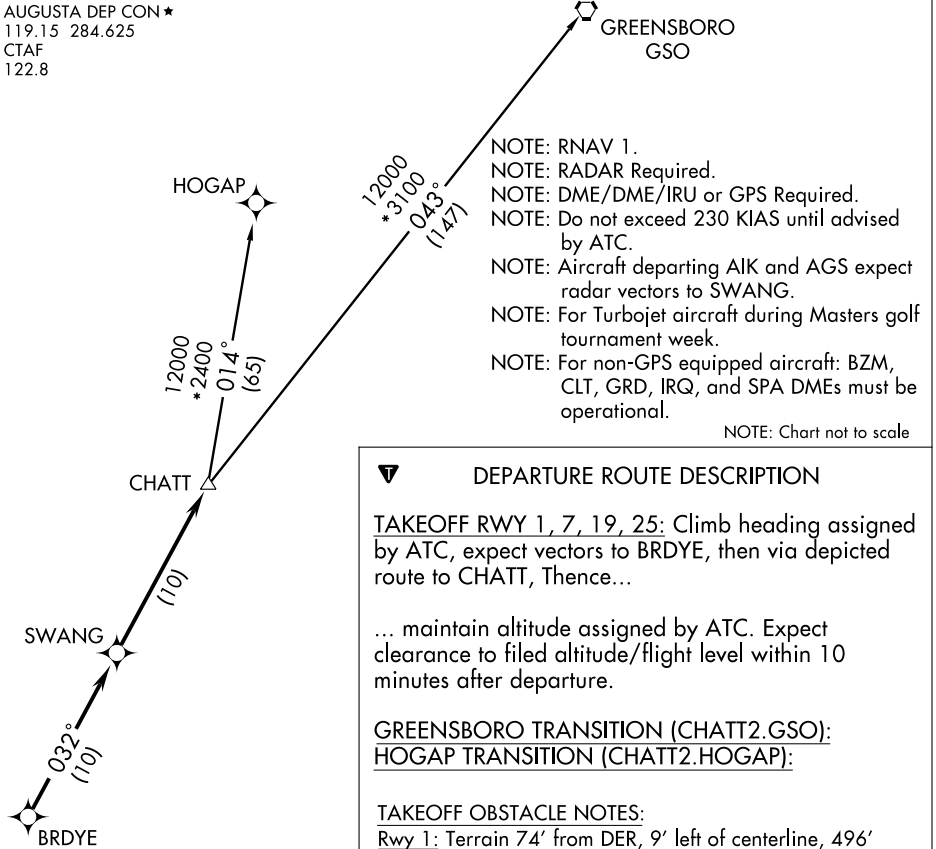


AUGUSTA DEP CON ★
119.15 284.625
CTAF
122.8



- NOTE: RNAV 1.
 - NOTE: RADAR Required.
 - NOTE: DME/DME/IRU or GPS Required.
 - NOTE: Do not exceed 230 KIAS until advised by ATC.
 - NOTE: Aircraft departing AIK and AGS expect radar vectors to SWANG.
 - NOTE: For Turbojet aircraft during Masters golf tournament week.
 - NOTE: For non-GPS equipped aircraft: BZM, CLT, GRD, IRQ, and SPA DMEs must be operational.
- NOTE: Chart not to scale

▼ DEPARTURE ROUTE DESCRIPTION

TAKEOFF RWY 1, 7, 19, 25: Climb heading assigned by ATC, expect vectors to BRDYE, then via depicted route to CHATT, Thence...

... maintain altitude assigned by ATC. Expect clearance to filed altitude/flight level within 10 minutes after departure.

GREENSBORO TRANSITION (CHATT2.GSO):
HOGAP TRANSITION (CHATT2.HOGAP):

TAKEOFF OBSTACLE NOTES:

Rwy 1: Terrain 74' from DER, 9' left of centerline, 496' MSL. Numerous trees beginning 169' from DER, 35' left of centerline, up to 100' AGL/659' MSL. Tree 6,023' from DER, 1,609' left of centerline, up to 100' AGL/649' MSL. Terrain beginning 75' from DER, 246' right of centerline up to 496' MSL. Numerous trees beginning 1,322' from DER, 241' right of centerline, up to 100' AGL/609' MSL.

Rwy 7: Terrain beginning 51' from DER, 207' right of centerline, up to 499' MSL. Numerous trees beginning 1,230' from DER, 550' right of centerline, up to 100' AGL/609' MSL. Numerous trees beginning 1,601' from DER, 731' left of centerline, up to 56' AGL/563' MSL.

Rwy 19: Numerous trees beginning at DER, 110' right of centerline, up to 100' AGL/629' MSL. Numerous trees beginning 6' from DER, 82' left of centerline, up to 100' AGL/639' MSL.

Rwy 25: Tree 1,244' from DER, 766' right of centerline, 73' AGL/572 MSL. Tree 1,506' from DER, 661' left of centerline, 72' AGL/561' MSL.

TAKEOFF MINIMUMS:
Rwy 7, 19, 25: STANDARD.
Rwy 1: 200-1¼ or STANDARD with a minimum climb of 220' per NM to 800, or alternatively, with standard takeoff minimums and a normal 200'/NM climb gradient, takeoff must occur no later than 1400' prior to departure end of runway.

SE-2, 22 OCT 2009 to 19 NOV 2009

SE-2, 22 OCT 2009 to 19 NOV 2009