

WAAS CH <b>65915</b> <b>W23A</b>	APP CRS <b>230°</b>	Rwy Idg TDZE <b>182</b> Apt Elev <b>182</b>	<b>5501</b>
--	------------------------	---	-------------

# RNAV (GPS) Z RWY 23

SUMTER (SMS)

**▼** For uncompensated Baro-VNAV systems, LNAV/VNAV NA below -15°C (5°F) or above 48°C (118°F). DME/DME RNP-0.3 NA. Procedure NA when R-6002A is active. Circling NA to Rwy 14-32. Inoperative table does not apply to LNAV/VNAV. When local altimeter setting not received, use Camden altimeter setting and increase all DA 65 feet and all MDA 80 feet and LPV all Cats, LNAV/VNAV all Cats, and LNAV Cats C/D visibilities ½ mile. Inoperative table does not apply to LNAV Cat C when using Camden altimeter setting. VDP and Baro/VNAV NA when using Camden altimeter setting.

ODALS

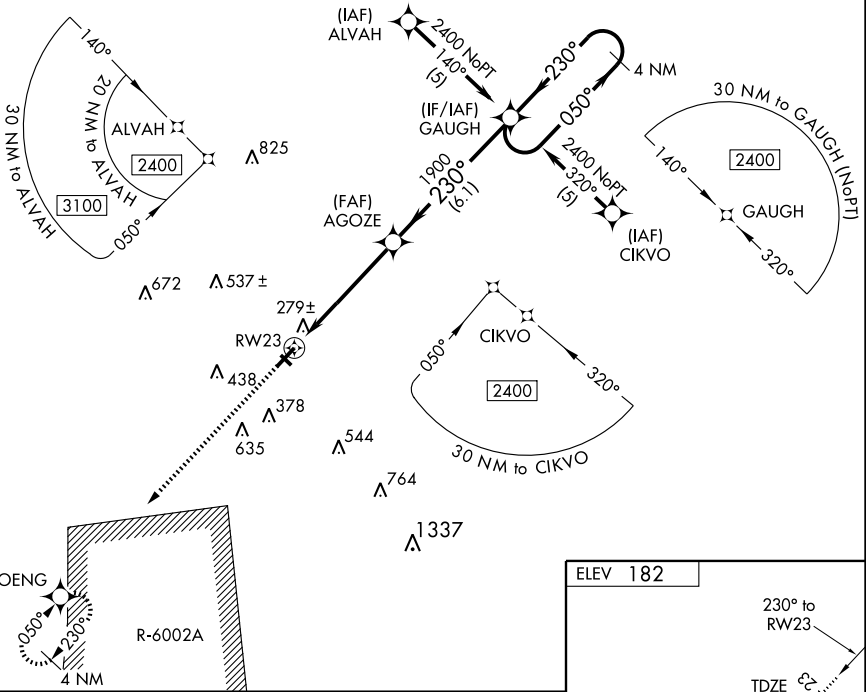


MISSED APPROACH: Climb to 2400 direct KOENG and hold.

AWOS-3  
**118.075**

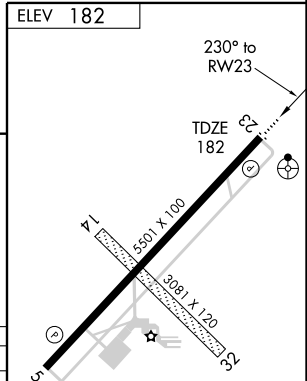
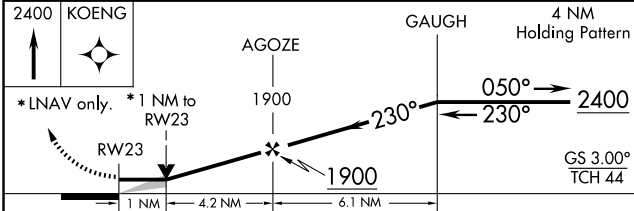
SHAW APP CON \*  
**125.4**

UNICOM  
**122.7 (CTAF)**



SE-2, 22 OCT 2009 to 19 NOV 2009

SE-2, 22 OCT 2009 to 19 NOV 2009



CATEGORY	A	B	C	D
LPV DA	382-¾		200 (200-¾)	
LNAV/VNAV DA	576-1½		394 (400-1½)	
LNAV MDA	540-¾ 358 (400-¾)		540-1¼ 358 (400-1¼)	
CIRCLING	640-1	458 (500-1)	640-1½ 458 (500-1½)	760-2 578 (600-2)

MIRL Rwy 5-23  
REIL Rwys 5 and 23