

WAAS CH <b>61215</b> <b>W05A</b>	APP CRS <b>050°</b>	Rwy Idg TDZE Apt Elev	<b>5501</b> <b>181</b> <b>182</b>
--	------------------------	-----------------------------	---

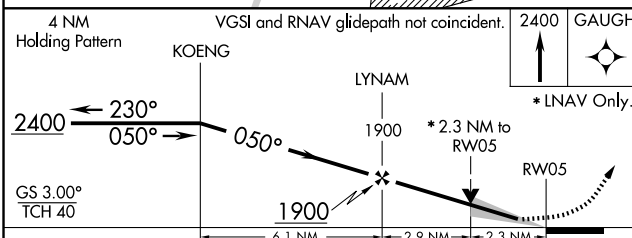
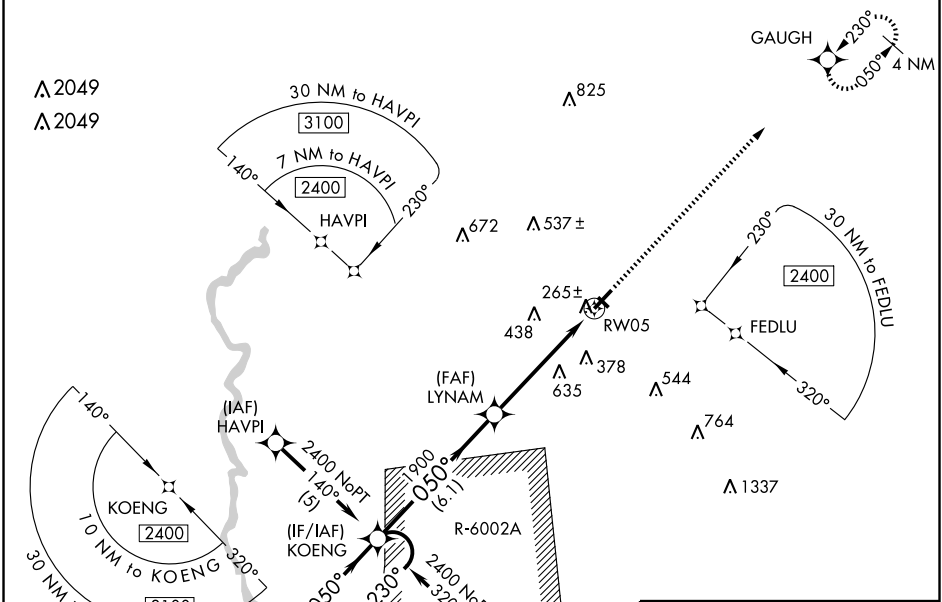
# RNAV (GPS) RWY 5

SUMTER (SMS)

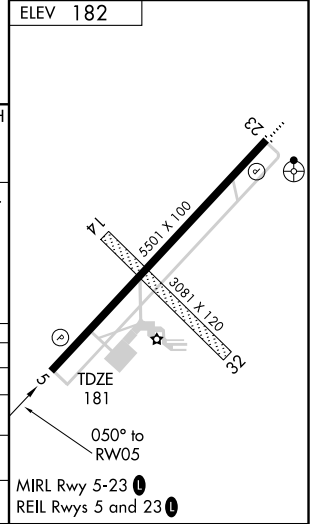
⚠ For uncompensated Baro-VNAV systems, LNAV/VNAV NA below -15°C (5°F) or above 48°C (118°F). DME/DME RNP-0.3 NA. Procedure NA when R-6002A is active. Circling NA to Rwy 14-32. When local altimeter setting not received, use Camden altimeter setting and increase all DA 65 feet and all MDA 80 feet and LPV all Cats, LNAV/VNAV all Cats, LNAV Cats C/D, and Circling Cats C/D visibilities ¼ mile. VDP and Baro/VNAV NA when using Camden altimeter setting.

MISSED APPROACH: Climb to 2400 direct GAUGH and hold.

AWOS-3 <b>118.075</b>	SHAW APP CON* <b>125.4</b>	UNICOM <b>122.7 (CTAF)</b>
--------------------------	-------------------------------	-------------------------------



CATEGORY	A	B	C	D
LPV DA		381-¾	200 (200-¾)	
LNAV/VNAV DA		535-1¼	354 (400-1¼)	
LNAV MDA	940-1 759 (800-1)	940-1¼ 759 (800-1¼)	940-2¼ 759 (800-2¼)	940-2½ 759 (800-2½)
CIRCLING	940-1 758 (800-1)	940-1¼ 758 (800-1¼)	940-2¼ 758 (800-2¼)	940-2½ 758 (800-2½)



SE-2, 22 OCT 2009 to 19 NOV 2009

SE-2, 22 OCT 2009 to 19 NOV 2009