

RNAV (GPS) RWY 26

HOPKINSVILLE-CHRISTIAN COUNTY (HVC)

APP CRS	Rwy Idg	5505
259°	TDZE	564
	Apt Elev	564

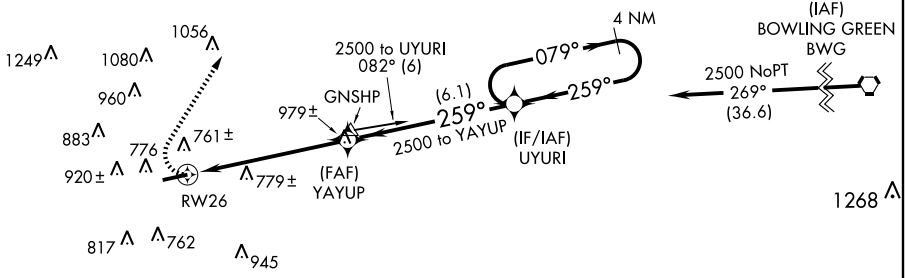
NA DME/DME RNP-0.3 NA. Visibility reduction by helicopters NA. When local altimeter setting not received, use Clarksville altimeter setting and increase all MDA 40 feet, increase LNAV and Circling Cat. C and D visibility ¼ mile.

MISSED APPROACH: Climbing right turn to 3000 direct WASMO and hold.

AWOS-3 132.575	CAMPBELL APP CON 118.1 269.525	CLNC DEL 120.9	UNICOM 122.8 (CTAF) 0
--------------------------	--	--------------------------	---------------------------------



Procedure NA for arrival at BWG VORTAC on airway radials 228 CW 303.



SE-1, 22 OCT 2009 to 19 NOV 2009

SE-1, 22 OCT 2009 to 19 NOV 2009

ELEV 564

MIRL Rwy 8-26
REIL Rwy 8 and 26

MSA RW26 2.5 NM
2700

3000 WASMO
4 NM Holding Pattern

YAYUP UYURI
2500 2500

≤ 3.05° TCH 40

VGSI and descent angles not coincident.

CATEGORY	A	B	C	D
LNAV MDA	1040-1	476 (500-1)	1040-1¼ 476 (500-1¼)	1040-1½ 476 (500-1½)
CIRCLING	1140-1	576 (600-1)	1280-2 716 (800-2)	1280-2¼ 716 (800-2¼)