

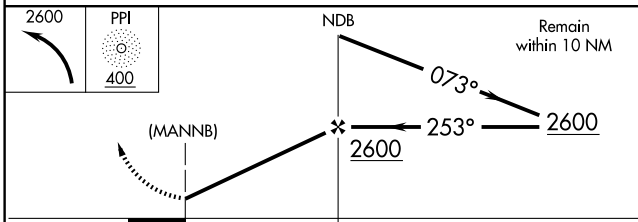
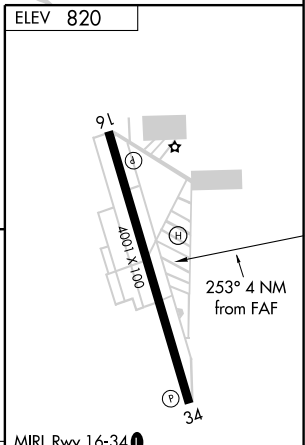
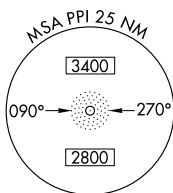
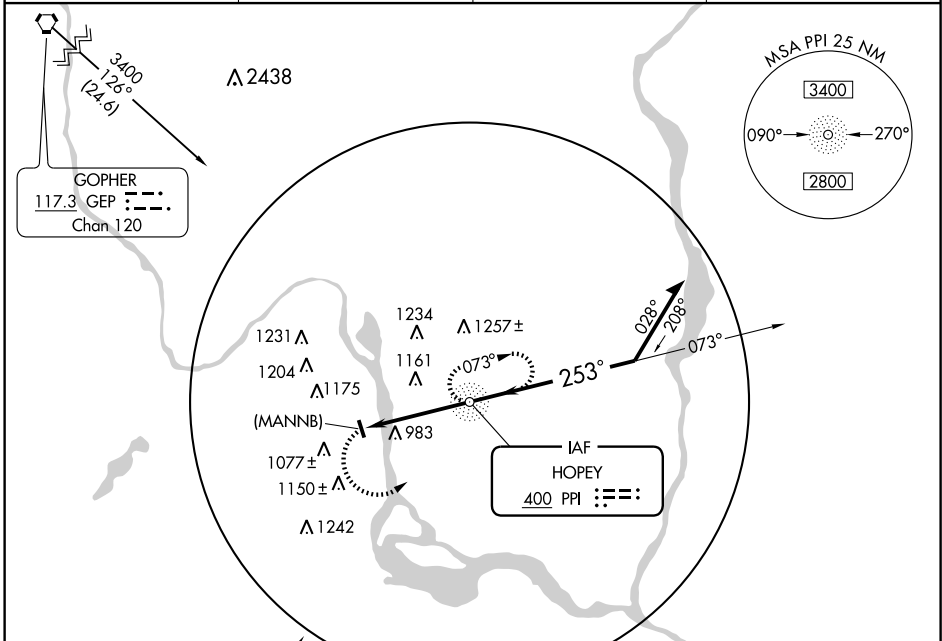
**NDB or GPS-B**

SOUTH ST. PAUL MUNI-RICHARD E. FLEMING FIELD (SGS)

NDB PPI <b>400</b>	APP CRS <b>253°</b>	Rwy Idg TDZE Apt Elev	N/A N/A <b>820</b>
-----------------------	------------------------	-----------------------------	--------------------------

MISSED APPROACH: Climbing left turn to 2600 direct PPI NDB and hold.

AWOS-3 <b>119.425</b>	MINNEAPOLIS APP CON <b>121.2 335.5</b>	CLNC DEL <b>118.2</b>	UNICOM <b>122.7(CTAF) 0</b>
--------------------------	---	--------------------------	--------------------------------



CATEGORY	A	B	C	D	FAF to MAP 4 NM					
CIRCLING	1480-1 660 (700-1)		1480-1¾ 660 (700-1¾)	1480-2 660 (700-2)	Knots	60	90	120	150	180
					Min:Sec	4:00	2:40	2:00	1:36	1:20

**NDB or GPS-B**

NC-1, 22 OCT 2009 to 19 NOV 2009

NC-1, 22 OCT 2009 to 19 NOV 2009