

| | | |
|---|------------------------|---|
| LOC/DME I-SGS 108.35 Chan 20 (Y) | APP CRS 339° | Rwy Idg 4001 TDZE 819 Apt Elev 820 |
|---|------------------------|---|

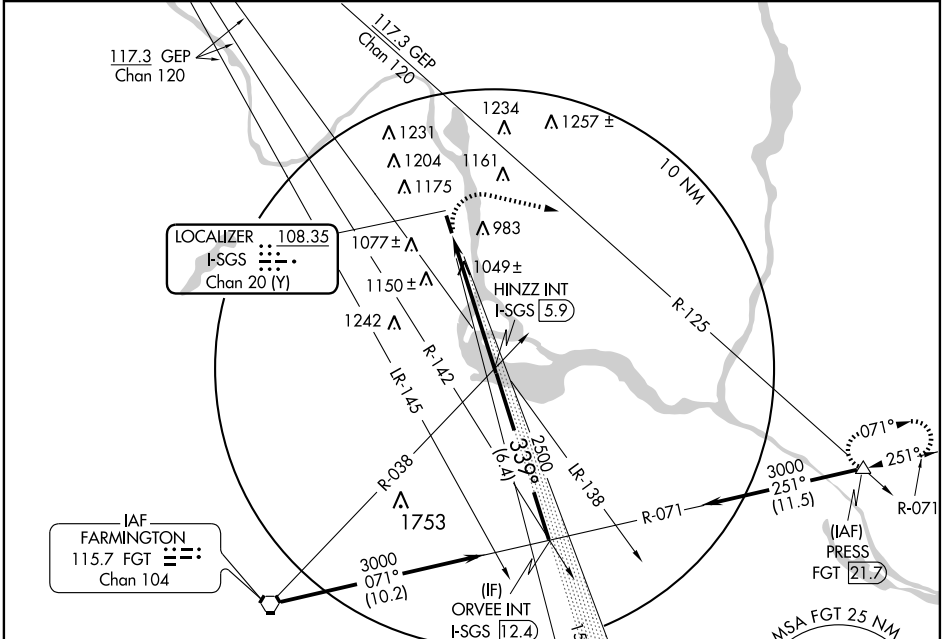
LOC RWY 34

SOUTH ST. PAUL MUNI-RICHARD E. FLEMING FIELD (SGS)

NA When local altimeter setting not received, use Minneapolis-St. Paul Intl/Wold-Chamberlain altimeter setting and increase all MDAs 40 feet; and all visibilities 1/2 mile.

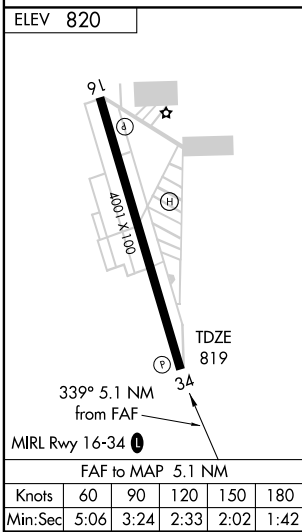
MISSED APPROACH: Climbing right turn to 3000 via heading 100° and GEP VORTAC R-125 to PRESS Int/FGT 21.7 DME and hold.

| | | | |
|--------------------------|---|--------------------------|-------------------------------|
| AWOS-3 119.425 | MINNEAPOLIS APP CON 121.2 335.5 | CLNC DEL 118.2 | UNICOM 122.7 (CTAF) |
|--------------------------|---|--------------------------|-------------------------------|

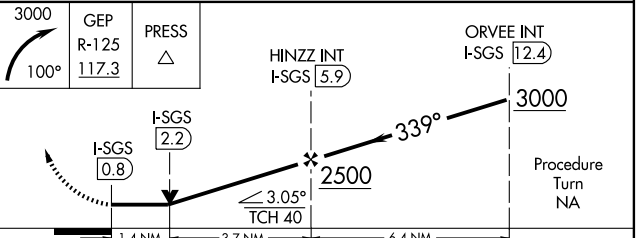


NC-1, 22 OCT 2009 to 19 NOV 2009

NC-1, 22 OCT 2009 to 19 NOV 2009



Procedure NA for arrival on FGT VORTAC via airway radials 011 CW 118.
Procedure NA for arrival at PRESS via V2-97 southeast bound.



| CATEGORY | A | B | C | D |
|----------|-----------------------|-----------------------|-------------------------|-------------------------|
| S-34 | 1300-1 | 481 (500-1) | 1300-1¼ 481 (500-1¼) | 1300-1½ 481 (500-1½) |
| CIRCLING | 1300-1 480 (500-1) | 1420-1 600 (600-1) | 1540-2 720 (800-2) | 1540-2¼ 720 (800-2¼) |

LOC RWY 34