

ARLINGTON, TEXAS

AL-5189 (FAA)

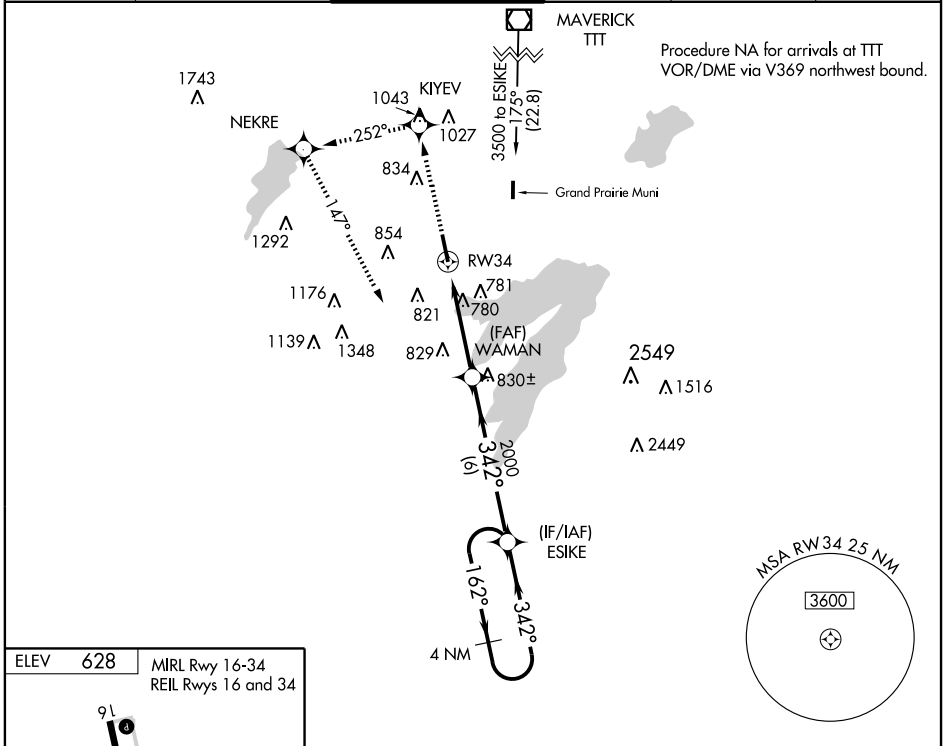
WAAS CH 56227 W34A	APP CRS 342°	Rwy Idg TDZE Apt Elev	6080 620 628
--	------------------------	-----------------------------	---

RNAV (GPS) RWY 34

ARLINGTON MUNI (GKY)

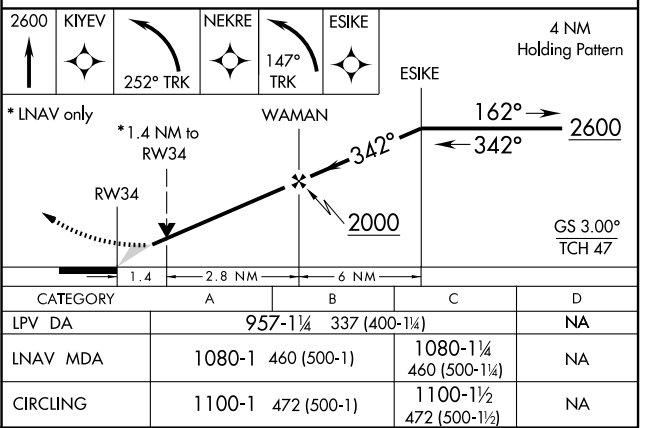
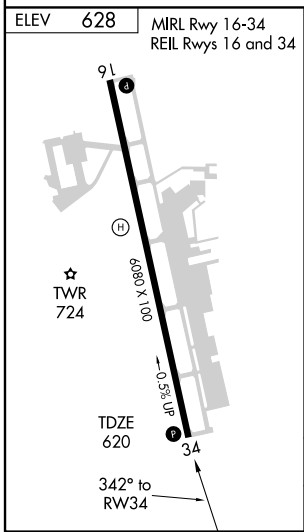
▼ DME/DME RNP-0.3 NA. When local altimeter setting not received, use Grand Prairie Muni altimeter setting. **MISSED APPROACH:** Climb to 2600 direct KIYEV and left turn via 252° track to NEKRE and left turn via 147° track to ESIKE and hold.

ASOS 127.375	REGIONAL APP CON 135.975 379.9	ARLINGTON TOWER ★ 128.625	GND CON 121.875	CLNC DEL 118.85 (When tower closed)	CTAF 128.625 Ⓛ
------------------------	--	-------------------------------------	---------------------------	--	---------------------------------



SC-2, 22 OCT 2009 to 19 NOV 2009

SC-2, 22 OCT 2009 to 19 NOV 2009



ARLINGTON, TEXAS
Amdt 1 09239

32°40'N-97°06'W

ARLINGTON MUNI (GKY) RNAV (GPS) RWY 34