

# JOE POOL THREE DEPARTURE

SL-5189 (FAA)

ARLINGTON MUNI (GKY)

ARLINGTON, TEXAS

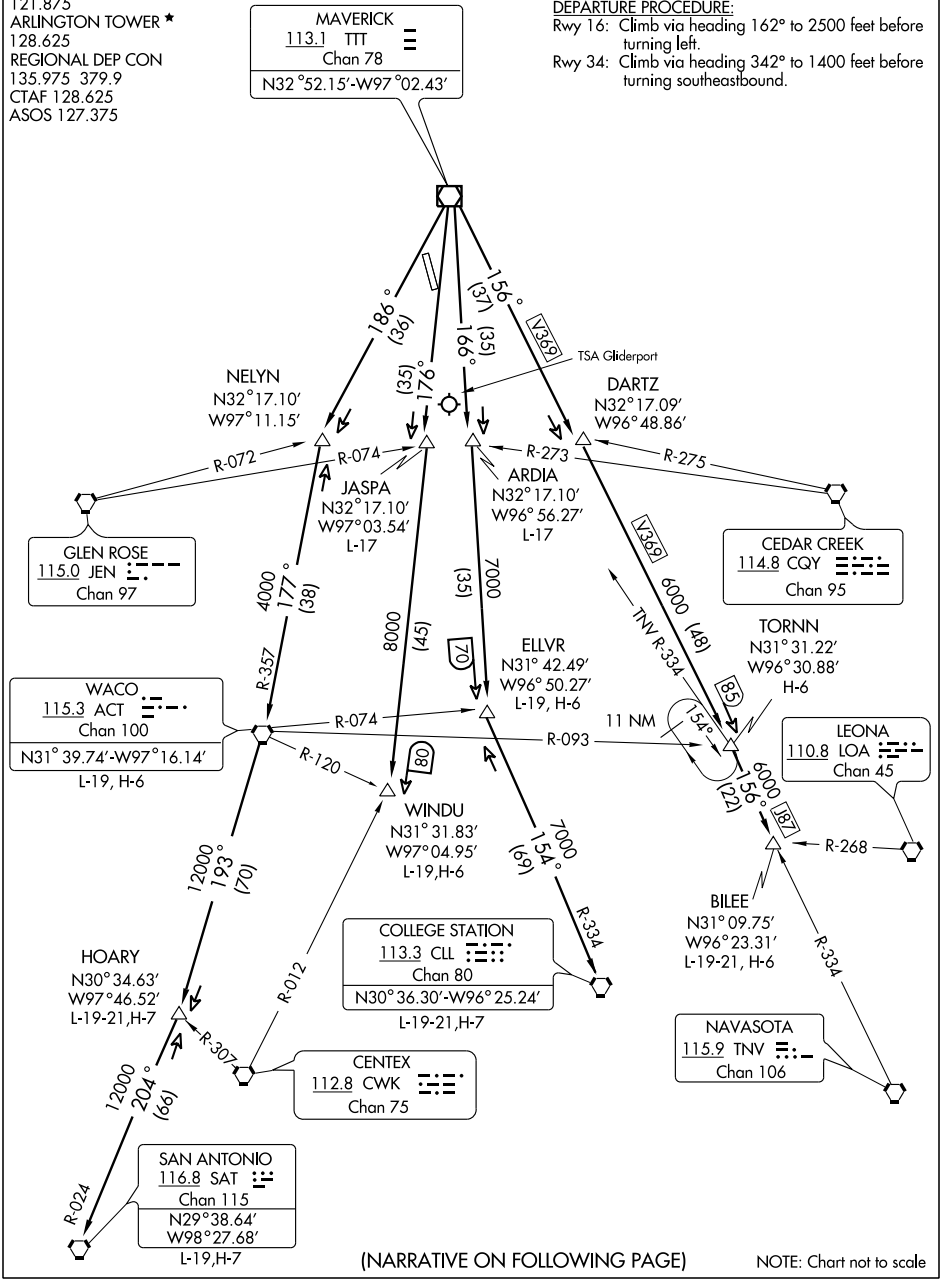
CLNC DEL (When tower closed)  
 118.85  
 GND CON  
 121.875  
 ARLINGTON TOWER ★  
 128.625  
 REGIONAL DEP CON  
 135.975 379.9  
 CTAF 128.625  
 ASOS 127.375

**TAKE-OFF MINIMUMS:**  
 Rwy 16, 34 standard.

**DEPARTURE PROCEDURE:**  
 Rwy 16: Climb via heading 162° to 2500 feet before turning left.  
 Rwy 34: Climb via heading 342° to 1400 feet before turning southeastbound.

SC-2, 22 OCT 2009 to 19 NOV 2009

SC-2, 22 OCT 2009 to 19 NOV 2009



(NARRATIVE ON FOLLOWING PAGE)

NOTE: Chart not to scale

# JOE POOL THREE DEPARTURE

ARLINGTON, TEXAS

ARLINGTON MUNI (GKY)