

ARLINGTON, TEXAS

AL-5189 (FAA)

ILS or LOC/DME RWY 34

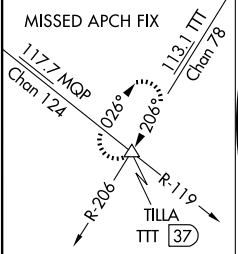
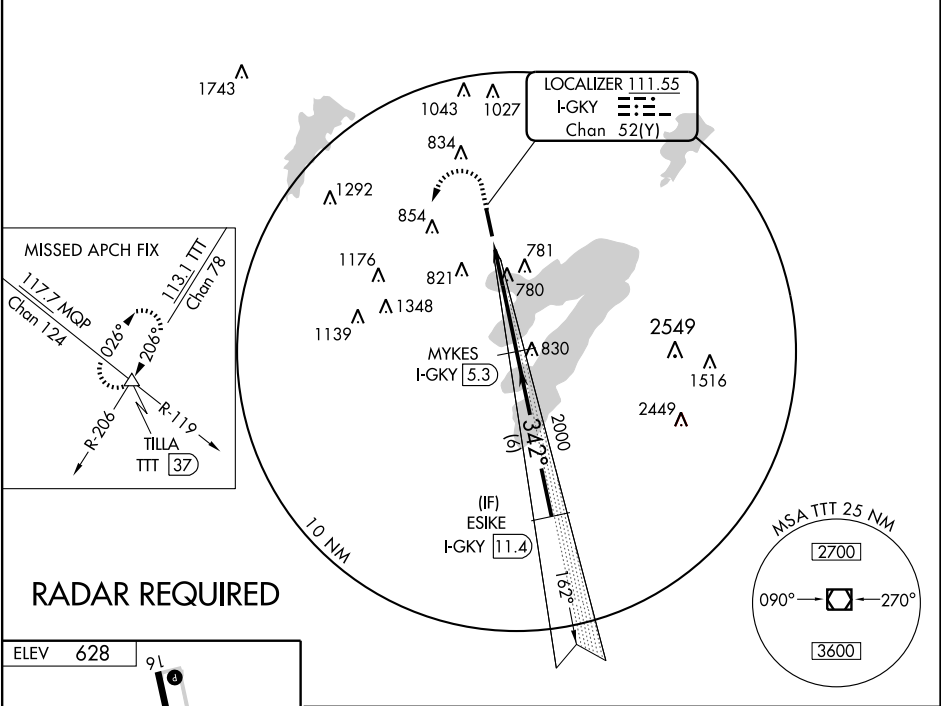
ARLINGTON MUNI (GKY)

LOC/DME I-GKY 111.55 Chan 52(Y)	APP CRS 342°	Rwy Ldg 6080 TDZE 620 Apt Elev 628
---	------------------------	---

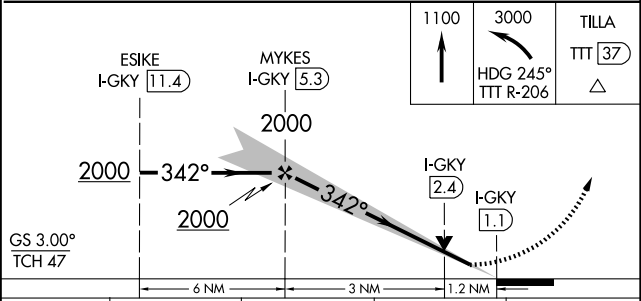
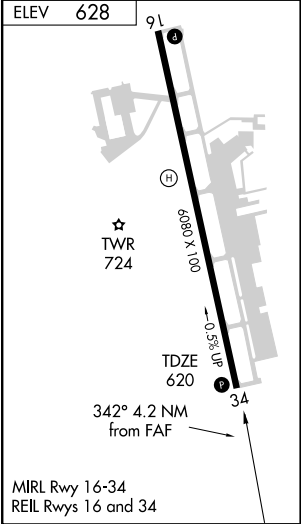
▼ If local altimeter setting not received,
▲ use Grand Prairie Muni altimeter setting.

MISSED APPROACH: Climb to 1100 then climbing left turn to 3000 via heading 245° and TTT VOR/DME R-206 to TILLA Int/37 DME and hold.

ASOS 127.375	REGIONAL APP CON 135.975 379.9	ARLINGTON TOWER * 128.625	GND CON 121.875	CLNC DEL 118.85 (When tower closed)	CTAF 128.625
------------------------	--	-------------------------------------	---------------------------	--	------------------------



RADAR REQUIRED



CATEGORY	A	B	C	D
S-ILS 34	820-3/4 200 (200-3/4)			NA
S-LOC 34	1040-1	420 (500-1)	1040-1 1/4 420 (500-1 1/4)	NA
CIRCLING	1080-1	452 (500-1)	1080-1 1/2 452 (500-1 1/2)	NA

ARLINGTON, TEXAS
Orig-A 09239

ARLINGTON MUNI (GKY)
32° 40' N-97° 06' W **ILS or LOC/DME RWY 34**

SC-2, 22 OCT 2009 to 19 NOV 2009

SC-2, 22 OCT 2009 to 19 NOV 2009