

HUBBARD SIX DEPARTURE

SL-5189 (FAA)

ARLINGTON MUNI (GKY)

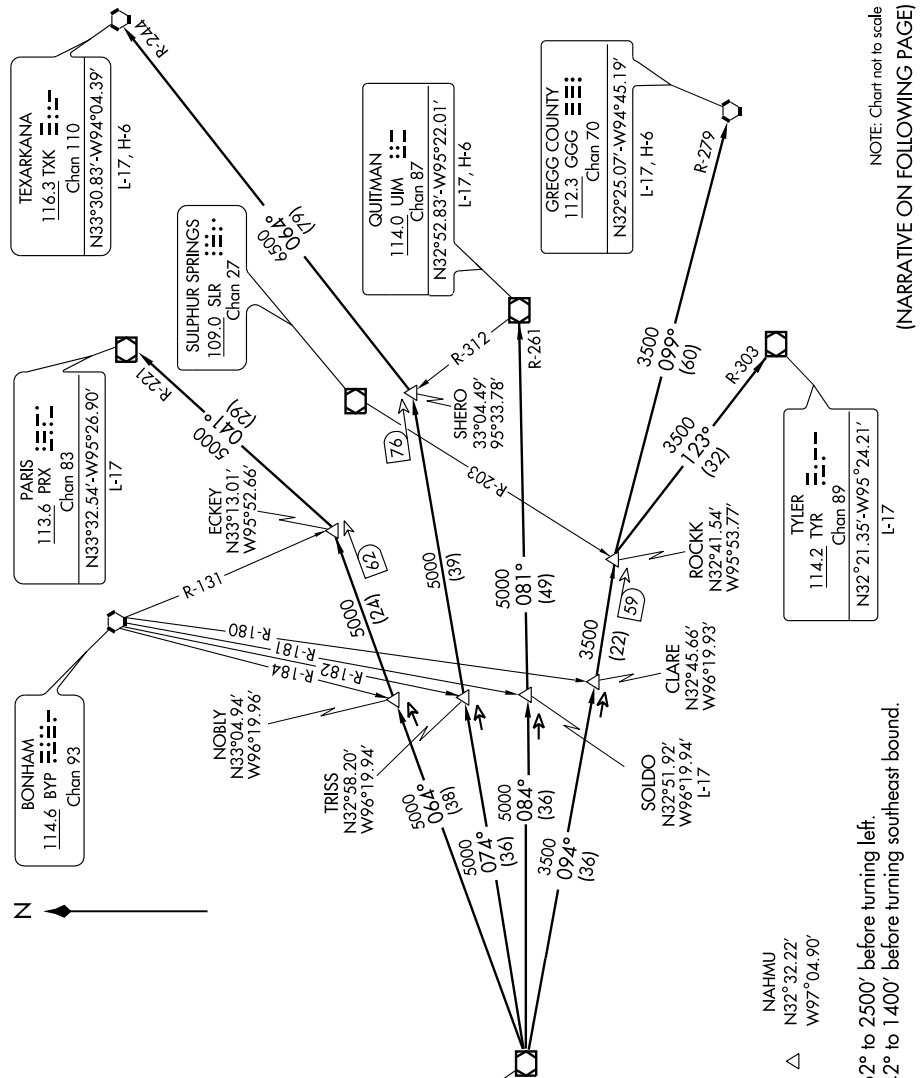
ARLINGTON, TEXAS

SC-2, 22 OCT 2009 to 19 NOV 2009

CING DEL (When tower closed)
 118.85
 GND CON
 121.875
 ARLINGTON TOWER ★
 128.625
 REGIONAL DEP CON
 135.975.379.9
 CTAF 128.625
 ASOS 127.375

Note:
 Tower farm 7.2 NM southeast
 of airport up to 2,549'

MAVERICK
 113.1 TTT
 Chan 78
 N32°52.15'-W97°02.43'



TAKE-OFF MINIMUMS:
 Rwy 16, 34 standard.
 NAHMU
 N32°32.22'
 W97°04.90'

DEPARTURE PROCEDURE:
 Rwy 16: Climb heading 162° to 2500' before turning left.
 Rwy 34: Climb heading 342° to 1400' before turning southeast bound.

NOTE: Chart not to scale
 (NARRATIVE ON FOLLOWING PAGE)

SC-2, 22 OCT 2009 to 19 NOV 2009

HUBBARD SIX DEPARTURE

ARLINGTON, TEXAS

ARLINGTON MUNI (GKY)