

RNAV (GPS) RWY 5

MADISONVILLE MUNI (2I0)

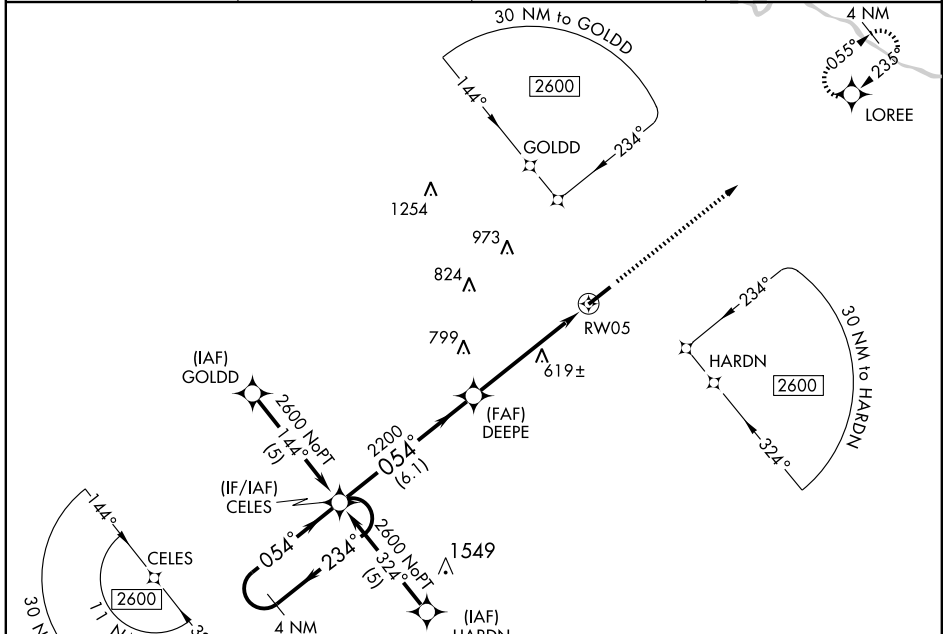
WAAS CH 82512 W05A	APP CRS 054°	Rwy Idg 6050 TDZE 439 Apt Elev 439
--	------------------------	---

▼
▲ NA

For uncompensated Baro-VNAV systems, LNAV/VNAV NA below -15°C (5°F) or above 48°C (118°F). DME/DME RNP-0.3 NA. Visibility reduction by helicopters NA. When local altimeter setting not received, use Evansville Rgnl altimeter setting and increase all DA 99 feet, and all MDA 100 feet, increase LPV and LNAV/VNAV all Cats. and LNAV Cats. C and D visibility ¼ mile. Baro VNAV NA when using Evansville Rgnl altimeter setting.

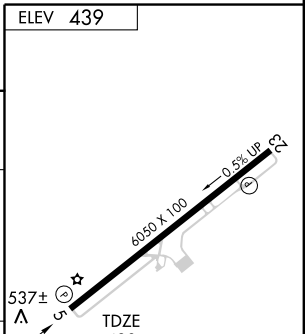
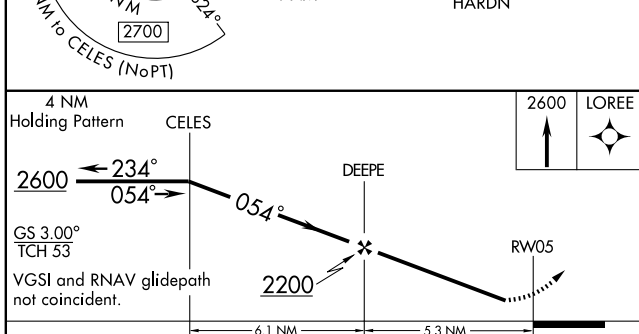
MISSED APPROACH:
Climb to 2600 direct LOREE and hold.

AWOS-3 126.475	EVANSVILLE APP CON * 126.4 226.4	CLNC DEL 120.1	UNICOM 122.7 (CTAF) 0
--------------------------	--	--------------------------	---------------------------------



SE-1, 22 OCT 2009 to 19 NOV 2009

SE-1, 22 OCT 2009 to 19 NOV 2009



CATEGORY	A	B	C	D
LPV DA		775-1¼	336 (400-1¼)	
LNAV/VNAV DA		807-1¼	368 (400-1¼)	
LNAV MDA	880-1	441 (500-1)	880-1¼ 441 (500-1¼)	880-1½ 441 (500-½)
CIRCLING	880-1 441 (500-1)	900-1 461 (500-1)	900-1½ 461 (500-½)	1000-2 561 (600-2)

ELEV 439

537±

0.5% UP

6050 X 100

TDZE 439

054° to RWY 5

HIRL Rwy 5-23
REL Rws 5 and 23