

# RNAV (GPS) RWY 23

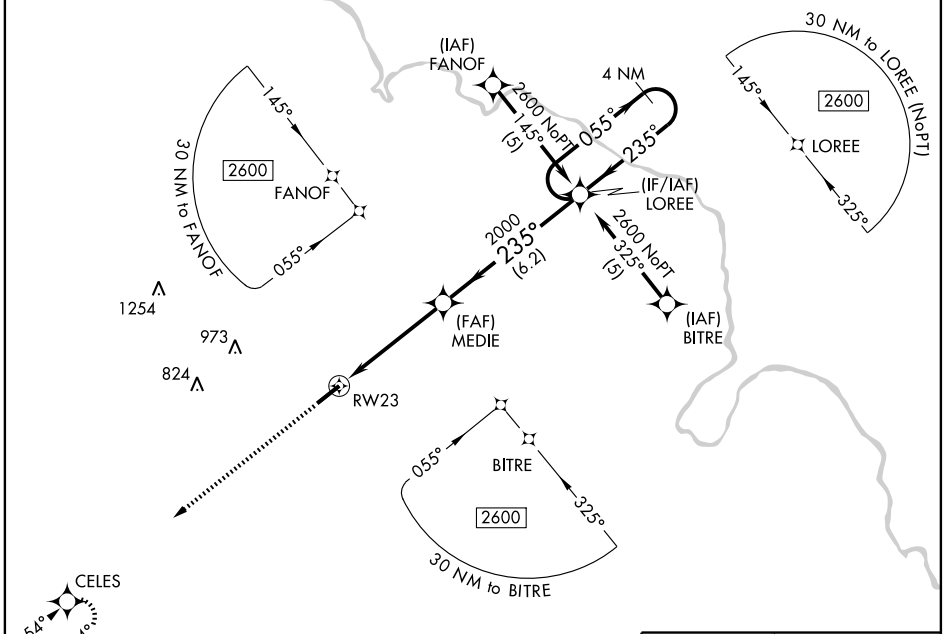
MADISONVILLE MUNI (2I0)

WAAS CH <b>77911</b> <b>W23A</b>	APP CRS <b>235°</b>	Rwy Idg TDZE <b>418</b> Apt Elev <b>439</b>	<b>6050</b>
--	------------------------	---	-------------

**NA** For uncompensated Baro-VNAV systems, LNAV/VNAV NA below -15°C (5°F) or above 48°C (118°F). DME/DME RNP-0.3 NA. When local altimeter setting not received, use Evansville Rgnl altimeter setting and increase all DA/MDA 100 feet, increase LPV and LNAV/VNAV all Cats., LNAV Cats. C and D visibility ¼ mile. Baro VNAV and VDP NA when using Evansville Rgnl altimeter setting.

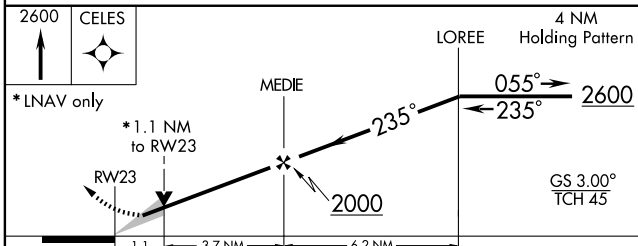
**MISSED APPROACH:**  
Climb to 2600 direct CELES and hold.

AWOS-3 <b>126.475</b>	EVANSVILLE APP CON * <b>126.4 226.4</b>	CLNC DEL <b>120.1</b>	UNICOM <b>122.7 (CTAF) 0</b>
--------------------------	--	--------------------------	---------------------------------



SE-1, 22 OCT 2009 to 19 NOV 2009

SE-1, 22 OCT 2009 to 19 NOV 2009



CATEGORY	A	B	C	D
LPV DA		740-1¼	322 (400-1¼)	
LNAV/VNAV DA		819-1½	401 (400-1½)	
LNAV MDA	880-1	900-1	900-1½	1000-2
	441 (500-1)	461 (500-1)	461 (500-1½)	561 (600-2)

