

VOR/DME GFK 114.3 Chan 90	APP CRS 344°	Rwy Idg 7349 TDZE 845 Apt Elev 845
----------------------------------------	------------------------	---------------------------------------------------------------

VOR RWY 35L

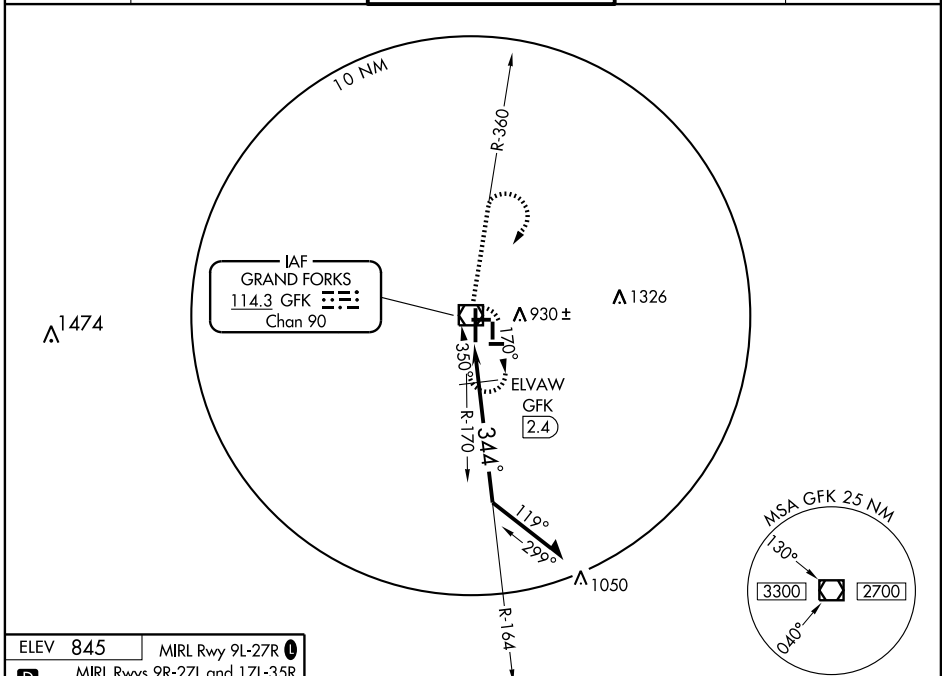
GRAND FORKS INTL (GFK)

⚠ If local altimeter setting not received use Crookston altimeter setting and increase, all MDAs 80 feet.
⚠ ELVAW FIX MINIMUMS: For inoperative MALSR, increase S-35L, Cat D visibility to 1 1/4 mile.



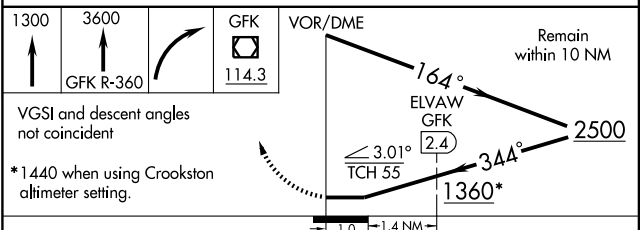
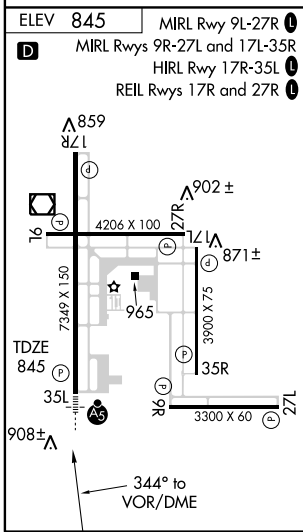
MISSED APPROACH: Climb to 1300 then climb to 3600 via GFK R-360 then right turn direct GFK VOR/DME and hold.

ATIS 119.4	GRAND FORKS APP CON 118.1 318.1	GRAND FORKS TOWER* 118.4 (CTAF) 350.35	GND CON 124.575	UNICOM 122.95
----------------------	-------------------------------------------	--------------------------------------------------	---------------------------	-------------------------



NC-1, 22 OCT 2009 to 19 NOV 2009

NC-1, 22 OCT 2009 to 19 NOV 2009



CATEGORY	A	B	C	D
S-35L	1360-1/2	515 (600-1/2)	1360-1 515 (600-1)	1360-1 1/4 515 (600-1 1/4)
CIRCLING	1360-1	515 (600-1)	1360-1 1/2 515 (600-1 1/2)	1400-2 555 (600-2)
ELVAW FIX MINIMUMS				
S-35L	1220-1/2		375 (400-1/2)	1220-1 375 (400-1)
CIRCLING	1280-1 435 (500-1)	1300-1 455 (500-1)	1300-1 1/4 455 (500-1 1/4)	1400-2 555 (600-2)